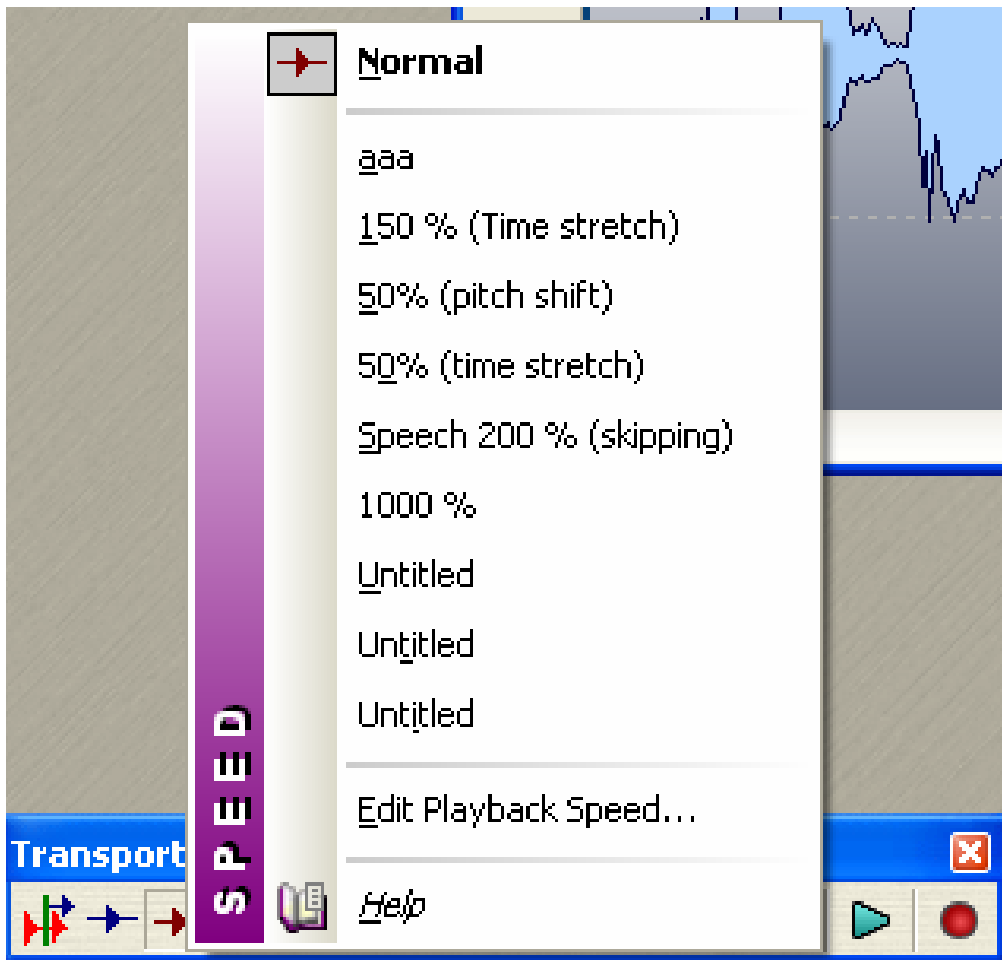


Playback Speeds in Wavelab 6

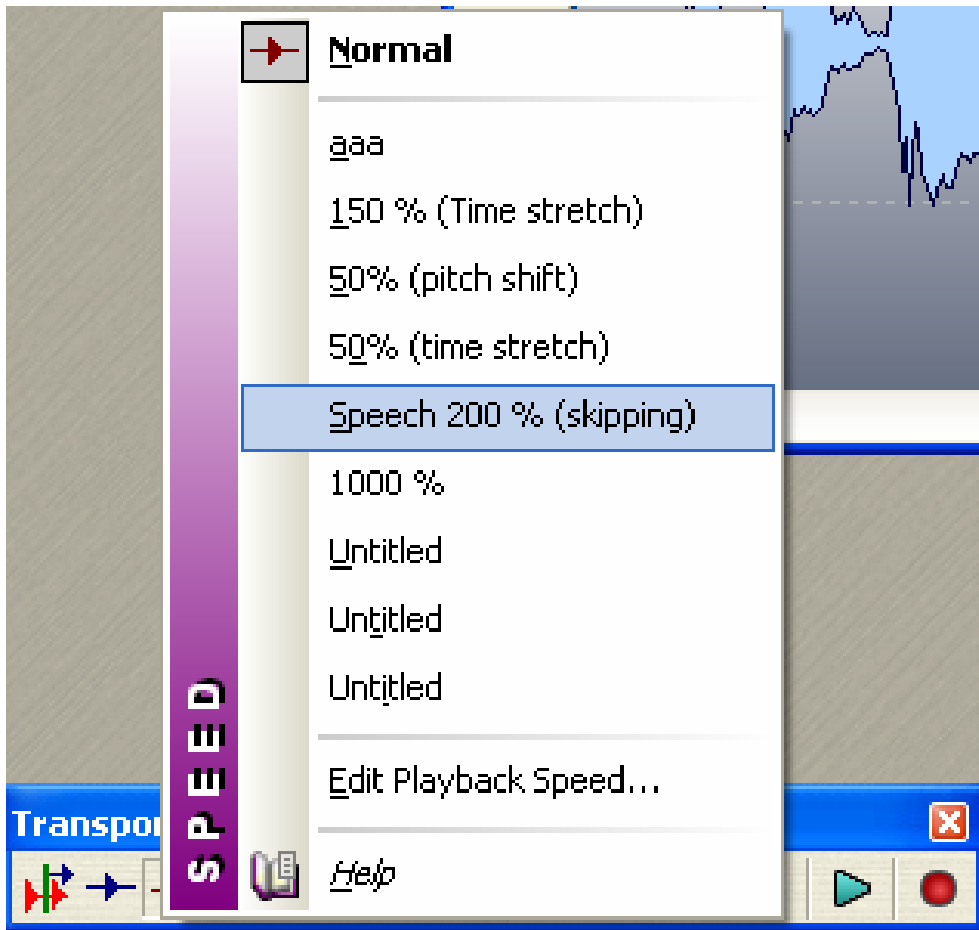
Q: How do I change the playback speed for a wave file?

A: Use the speed control.

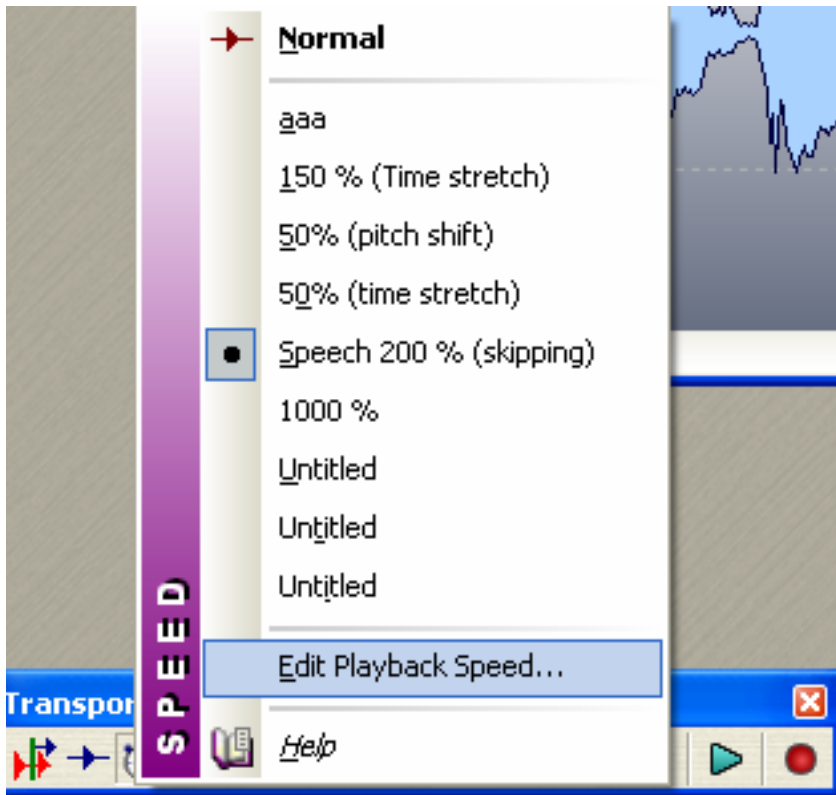
The speed control is a maroon arrow with a line through it on the transport bar. It defaults to playback at normal speed.



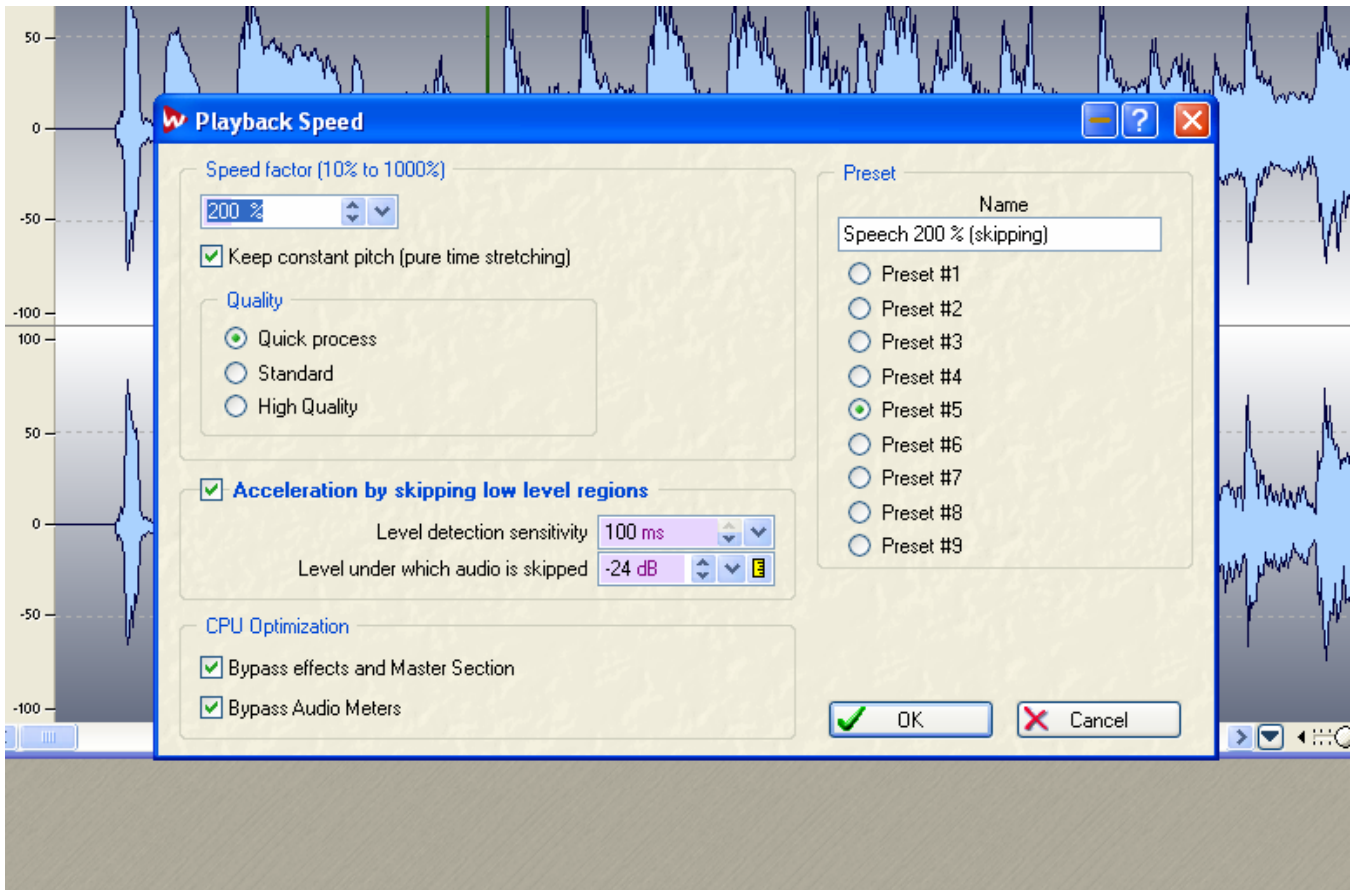
You can change this to any of 9 presets.



Or you can adjust the presets yourself by clicking on Edit Playback Speed.



This will pull up a menu of speed options.



Speed factor refers to the increase (more than 100%) or decrease (less than 100%) of the sound. You can choose to keep the pitch constant or to allow the pitch to be changed in accordance to the increase or decrease.

The option “Acceleration by skipping low level regions” bypasses the playback of quiet sounds. Using this option will allow faster playback to be clear with less clicks and pops.