

# Wavelab - Setting the Playback Speed

You can change the playback speed for open documents with or without affecting the pitch of the audio. Playback speed can be set for:

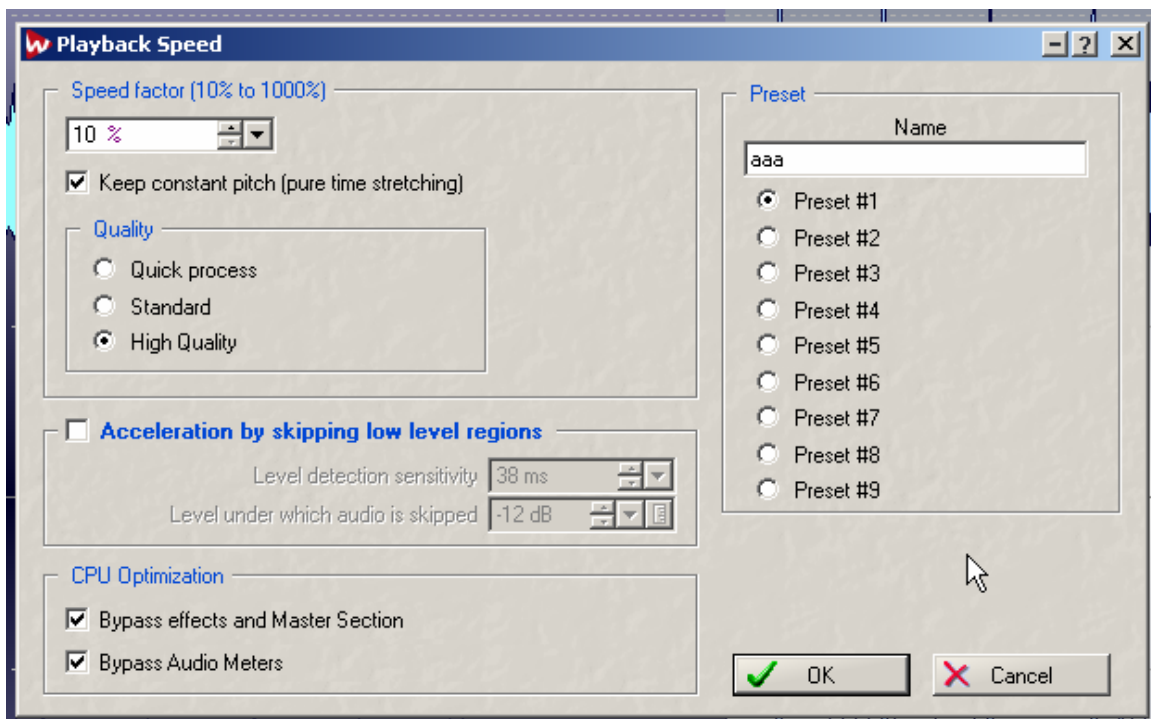
- Wave windows
- Audio Montage (all clips in a montage are affected).

1. Click the red Playback Speed button on the Transport bar.



2. From the pop-up menu that appears, select “Edit”.

The Playback Speed dialog appears.



3. Select a preset number by clicking one of the radio buttons to the right, and type in the desired name in the field above the buttons.

---

**Note that Wavelab comes with a number of ready-made playback speed presets, so unless you want to overwrite one of these with your own settings, make sure to select a preset number that isn't already used.**

---

4. Make the desired settings in the dialog and save them as the selected preset by clicking “OK”.

5. You can now select the saved preset from the pop-up menu on the Transport bar.