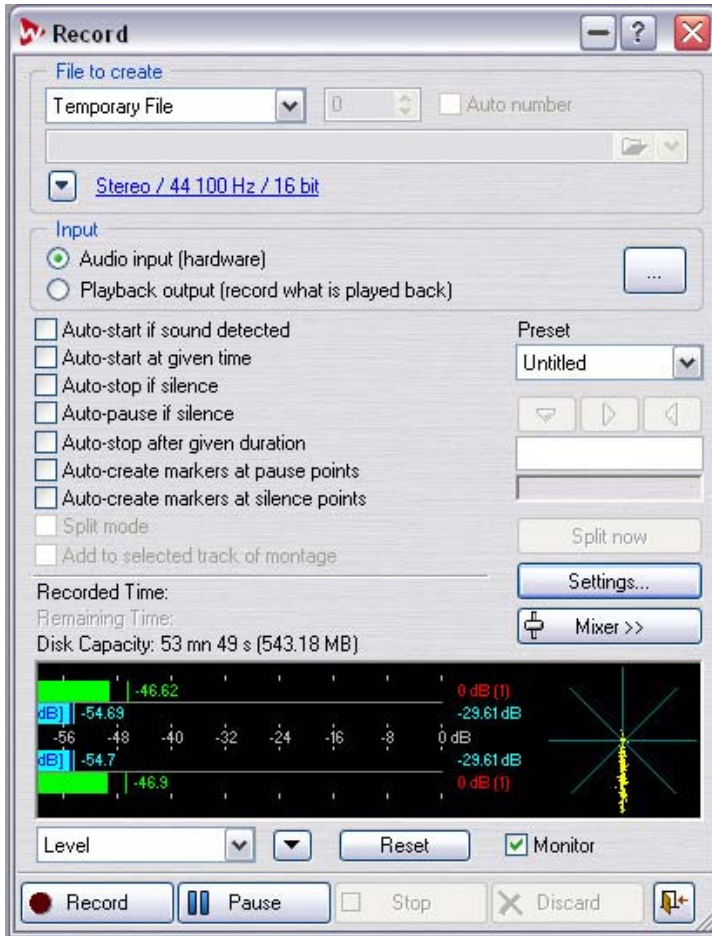


Wavelab – Record Box



Preparations

To record a new file, proceed as follows:

1. Click the Record button, or press [*] on the numeric key pad.
2. Decide whether you want to record to a “named” or a “temporary” file, by selecting from the pop-up at the top of the dialog. Temporary files are practical to use, since you don’t need to name the file beforehand, you just “hit record and go”. On the other hand, you will need to save the file at a later stage. Temporary files are always wave files, while named files allow you to choose to record files in a number of different formats. Also note that if you plan to make a recording over several minutes we recommend that you record a named file.

- If you plan to record continuously for a long time, especially if it is a multi-channel recording, you should consider using Wave 64 as the format. Other formats can record files up to 2 GB, whereas the Wave 64 format allows you to record files of any size.

- Alternatively, if you have the “Support RF64 file format” option activated, the standard Wave file format switches automatically to the RF64 file format as soon as the file size exceeds 2 GB, without any performance loss or interruption. This is especially useful when recording very long sessions as there is no need to worry about file size limit (apart from available disk space). A RF64 file will still have the

“.wav” extension but can only be opened with an application that supports the RF64 standard.

3. If you have selected one of the “Named File” options in the step above, type in the path to the desired destination for the file on the line below the pop-up or click the folder button and specify a file location. If you activate the Auto number checkbox, a three-digit number will be added to the file name. Starting at the number you specify in the value field to the left of the checkbox, the Auto number will be increased in increments with each new recording, to prevent existing files from being overwritten.

4. Click the file format button at the top of the Record dialog, and decide on a recording format. Wavelab lets you record directly into a number of different formats (see “Supported file formats” on page 113 for details). In the Audio File Format dialog that appears, you can among other things choose the desired format, sample rate, number of channels to record (see “Multichannel recording” on page and bit resolution. Click the question mark icon in the respective dialog for details.

5. Click OK to close the Audio File Format dialog.

6. Select an appropriate Input mode, depending on whether you want to record the audio card input or the Playback output:

- In “Audio input (hardware)” mode, Wavelab will record the signals from the activated inputs on your audio hardware. This is the standard mode. Use this for recording any external audio signal sources connected to the inputs on your audio card.
- If you are using an ASIO driver and this mode is selected, you can click the button to the far right in this section of the dialog to access the “Recording channels” dialog. In this dialog you can select which input channels you want to record from. If you have an audio card with multiple inputs, you can record up to 8 channels simultaneously. See “Multichannel recording” on page 521 for information about multichannel recording.
- If you are using a MME/WDM driver and this mode is selected, you can click the button to the far right in this section of the dialog to access the audio card preferences (see “Audio card settings” on page 25).
- In “Playback output” mode, the program will record only what is being played back in Wavelab itself. This mode does not utilize your audio card or any Windows audio protocols. Instead, the audio from Wavelab is sent straight back into Wavelab and this input is then recorded. The typical use for this is to record what you are playing back, capturing any real-time volume or parameter changes you make during playback.

7. If needed, activate the desired recording options in the dialog. There are also additional settings in a separate dialog, opened by clicking the settings button. For details, click the question mark icon in the dialog. At this point, you can start recording (see “Start recording!” on page 152) if you like. For details on the available recording options, click the question mark icon in the respective dialog.

Recording settings presets

You can create and save different recording options and settings as presets for quick access by using the Preset menu in the Record dialog. This way, you can set up options and settings for different specific recording purposes and then quickly load the settings when the need arises. See “Presets” on page 65 for information about creating, saving and loading presets in Wavelab.

Setting up the mixer (MME/WDM drivers)

At this point you may want to click the Mixer button to adjust the relative volume of your card’s inputs.

- For the mixer to appear, you must have specifically selected the card on the Preferences–Audio device tab.

If the Input and Output are set to “Microsoft Sound Mapper” a mixer cannot be created.

Exactly what controls will appear in the mixer depends on the card, but here are some possibilities:

- Master Gain (output-fader)
- Synth In (input-fader plus on/off check box)
- CD (input-fader plus on/off check box)
- Line (input-fader plus on/off check box)
- Mic (input-fader plus on/off check box)

In addition to the above, the card might have custom controls for monitoring, Etc, which cannot be accessed from the Wavelab mixer. Again, please use the application(s) included with the card. Not all audio cards have a mixer application and can therefore not access the Wavelab mixer. This is especially true with digital I/O cards.

Using the meters

In the lower part of the Record dialog, you will find a meter display. This is useful for checking the input level, as well as the frequency spectrum of the input signal.

- The meters in the Record dialog are “miniature” versions of the Level, Spectrum and Phase Meters in the Meter windows. For the meters to register the signal, you need to activate the Monitor checkbox. This can be done automatically, if the option “Activate meters when opening record window” is activated in the Record Settings dialog. The pop-up menu in the lower left corner allows you to select between Level or Spectrum metering.

- When the Level Meter is selected, horizontal bars show the peak level (outer bars) and average loudness (VU, inner bars) of each channel. Values are also shown numerically. If the Phase Scope option is activated on the pop-up menu next to the Reset button, a Phase Meter is displayed to the right of the Level Meter (see “Phase Scope” on page 165).

- When the Spectrum Meter is selected, a “bar diagram” will be shown, providing a continuous graphical representation of the frequency spectrum.

You can reset the meters by clicking the Reset button – this instantly resets all meters and numerical indicators, including the Maximum Peak and RMS values to the right in the Level Meter. You can also select one of five presets for the Level Meter on the pop-up menu next to the Reset button. These presets (containing settings for meter ranges, colors, etc.) can be edited by selecting “Settings...” from the pop-up

menu. The options are described in the chapter “Making settings for the level and pan meters” on page 161.

Use the Level Meter to check the audio input level. Adjust this (with the mixer controls or the audio card’s applications), so that the Peak Level Meters go as high as possible without ever reaching 0dB!

- You can also use the meters to monitor the signal being written to disk during rendering or recording. See “Monitor file rendering” on page 157.

Checking disk capacity

The Disk Capacity indicator above the meters helps you make sure you have enough disk space for the recording. This indicator shows the amount of available disk space on the hard disk specified in the Create Final File path, or the hard disk you have selected for your temporary files (see “Temporary files” on page 28). Please note that this value is approximate. When there is less than ten seconds of available hard disk space, the disk capacity indication is displayed in red.

Start recording

When all the preparations are done, click Record to start the actual recording.

- If you have selected one of the Auto-start options (click the question mark icon in the Record dialog), the recording will go into Pause mode (the Record button will blink), until the specified Auto-start criteria are met. When recording starts, the Record button will be “lit” and the Recorded Time value will indicate how much you have recorded.

- If you have selected the “Auto-stop after given duration” option, the “Remaining Time” value will indicate how much recording time you have left.

- If you like, you can pause the recording by clicking the Pause button at any time. The Record button will blink to indicate Pause mode. To resume recording, click the Pause or Record button again. As described above, a short section of audio just before you resume recording (according to the Pause memory value in the Record Settings dialog) will be captured.

- You can drop markers in the file during recording by clicking the Drop Marker buttons.

- If you want to abort the recording, click the Discard button. This terminates recording and discards the recorded file.

- Note that if you have activated the option “Confirm when discarding recording” in the Record settings dialog, a dialog will appear asking you to confirm whether you really want to terminate recording and discard the recorded file. If you change your mind and select “Cancel”, recording will continue.

- When you have finished, click Stop. You can also have recording stop automatically by using one of the Auto-stop options. Either way, the recording by default appears in a new window behind the dialog.

- You can deactivate the option “Open audio file in Wavelab after recording” in the Record settings dialog if you don’t want the recording to appear in a new window. In this case, the recorded file is saved to disk but does not automatically appear in Wave-Lab after recording. If you want to perform more recordings after the first,

click the Record button and record again. If you have selected the Named File option, and the Auto number option is deactivated, you have to specify another file name to avoid overwriting the previously recorded file.

When you have finished recording completely, click the Close button (in the lower right corner) to close the dialog.

- If you have created temporary files, and want to save the file(s) permanently, click on each document you have created and use Save As on the File menu to save each one.