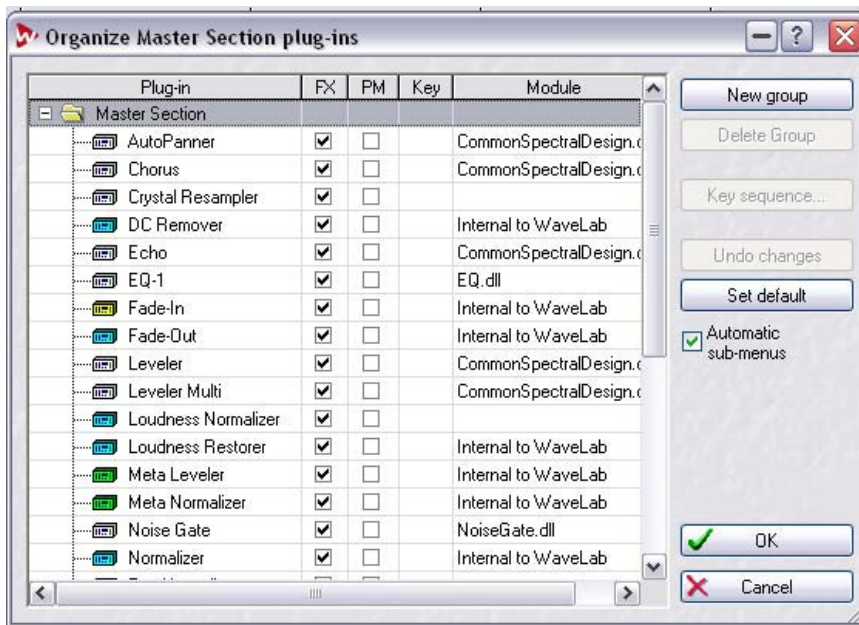


Wavelab – Organize Plugins



Groups

In the Master Section folder in the list, you will find subfolders, representing groups of plug-ins. By organizing your plug-ins into folders, you arrange the way they appear on menus in the program. How you organize your effects is of course up to you, but initially, they are categorized according to their technical “type”, regular Wavelab plug-ins in one folder, VST plug-ins in another, DirectX plug-ins in yet another, etc. VST and DirectX plug-ins need to be in a group, whereas Wavelab plug-ins can be outside all groups.

The columns

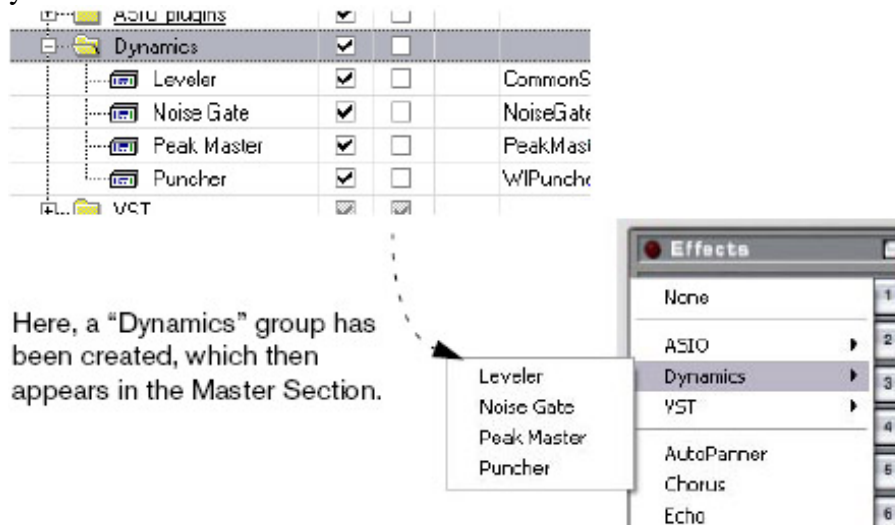
- The Plug-in column displays the names of all the available plug-ins.
- The FX column determines whether a plug-in is active or not, see below.
- If the checkbox in the PM (Post Master) column is activated for a plug-in, it will be available for selection in the Dithering pane in the Master Section (after the master faders in the signal path). This allows you to use separately purchased dithering plug-ins and similar.
- The Key column displays the key sequence defined for a plug-in.
- The Module column tells you the name of the plug-in (dll) file.

Activating and deactivating plug-ins and groups

By clicking in the FX column, you can activate/deactivate individual plug-ins or an entire group of plug-ins (see below for more information on groups). If you have plug-ins installed on your computer that you don’t want to use in Wavelab, this lets you disable them completely, thus reducing “menu clutter”. The disabled plug-ins will still be applicable in other programs that can use them. An example of this would be DirectX plug-ins. Many of these do not apply to audio at all and are of no relevance to Wavelab whatsoever. By disabling these, you will make it easier to find the plug-ins that you really want to use in Wavelab.

Working with groups

The Master Section plug-ins can be organized into groups. This is done by adding subfolders to the Master Section folder and then dragging Plug-in icons into these folders. When you then select from plug-in menus or display lists of plug-ins, the organization you have created will be reflected in the menu/list.



- To create a group, click the New Group button, enter a name and press [Return]. The group will initially appear at the end of the list, but when you start using it, the list will be resorted so that the groups are displayed in alphabetical order.
- To delete a group, select it and click Delete Group. If the group contains any plug-ins, they will not be deleted. Instead, they will appear in the Master Section, outside all other groups.
- Moving plug-ins between groups is done by dragging and dropping, just as when dragging files in the Windows Explorer.
- If you lose track of your changes and wish to return to the state that the list was in when you first opened the dialog, click Undo Changes.
- If you want to restore everything to the default “factory settings”, click “Set default”. These settings are stored in the files “WaveLab/Presets/Plug-ins/PlugIn-PrefAE.set” and “WaveLab/System/plugin.set”. If you ever encounter problems with “lost” plug-ins, delete these files and the program will re-scan and build a new list of plug-ins the next time you launch it. This can also be achieved by clicking the “Force plug-in detection at next launch” button in the Preferences–VST dialog.

Handling VST plug-ins

If you have VST plug-ins installed on your computer that you don’t need in Wavelab, you can tell the program to ignore these on launch. This is done in the Preferences–VST dialog. It is possible to exclude single VST plug-ins, entire folders and subfolders containing VST plug-ins, and the “Shared VST Plug-ins” folder (if present on your system).