

Wavelab - Setting the Playback Speed

You can change the playback speed for open documents with or without affecting the pitch of the audio. Playback speed can be set for:

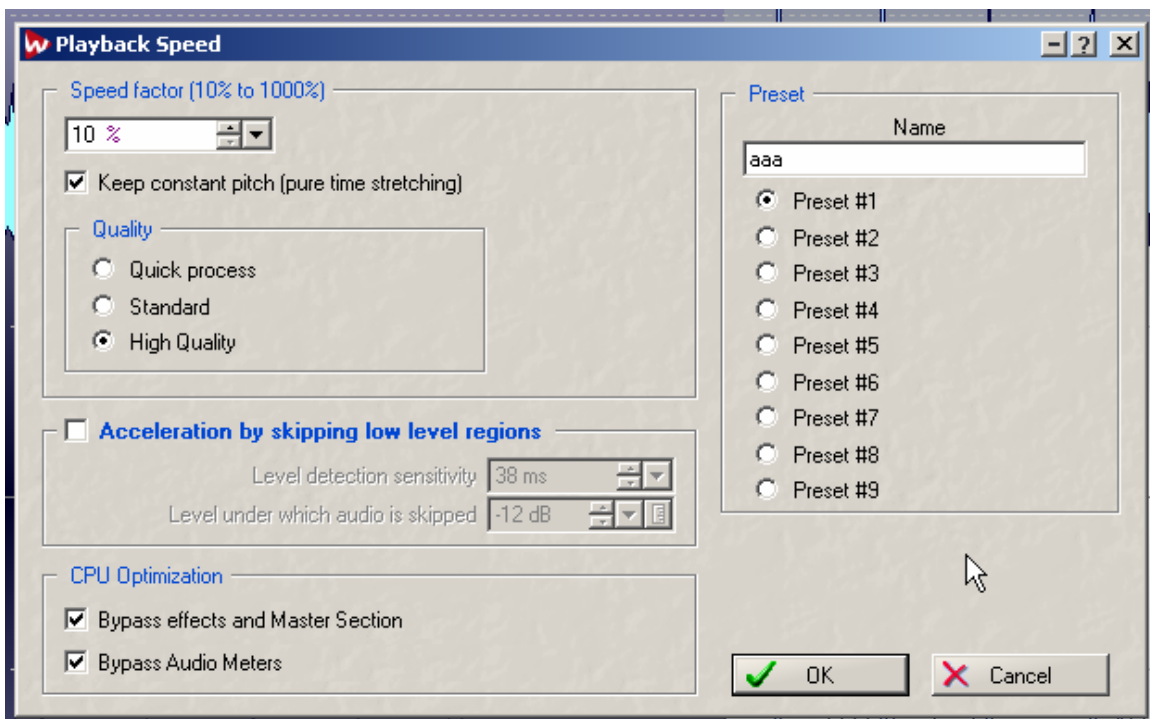
- Wave windows
- Audio Montage (all clips in a montage are affected).

1. Click the red Playback Speed button on the Transport bar.



2. From the pop-up menu that appears, select “Edit”.

The Playback Speed dialog appears.



3. Select a preset number by clicking one of the radio buttons to the right, and type in the desired name in the field above the buttons.

Note that Wavelab comes with a number of ready-made playback speed presets, so unless you want to overwrite one of these with your own settings, make sure to select a preset number that isn't already used.

4. Make the desired settings in the dialog and save them as the selected preset by clicking “OK”.

5. You can now select the saved preset from the pop-up menu on the Transport bar.