

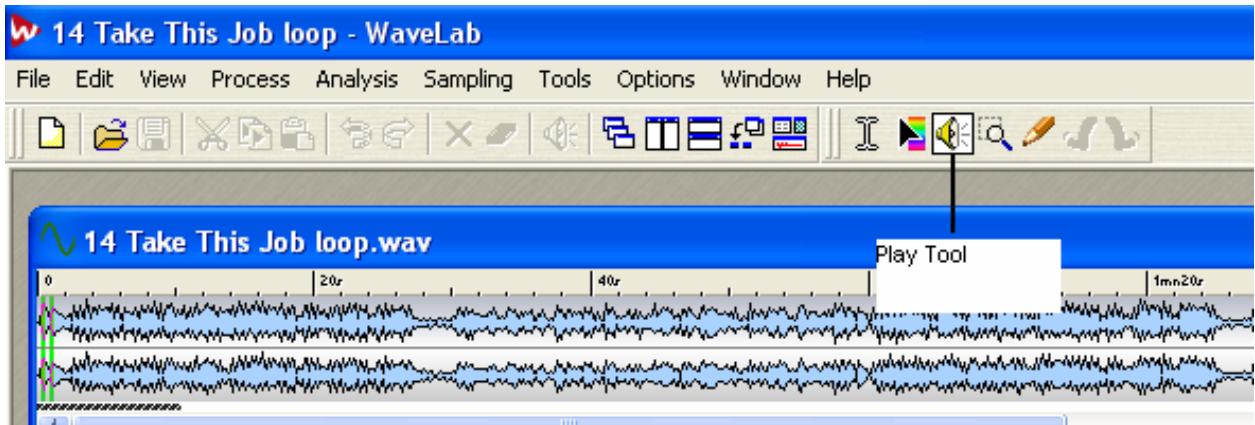
Wavelab - The Play Tool

Q: How can I playback just one side of a stereo recording?

A: Use the Play Tool.

Selecting the Play tool momentarily

The Play tool can be selected by clicking in the Toolbox.



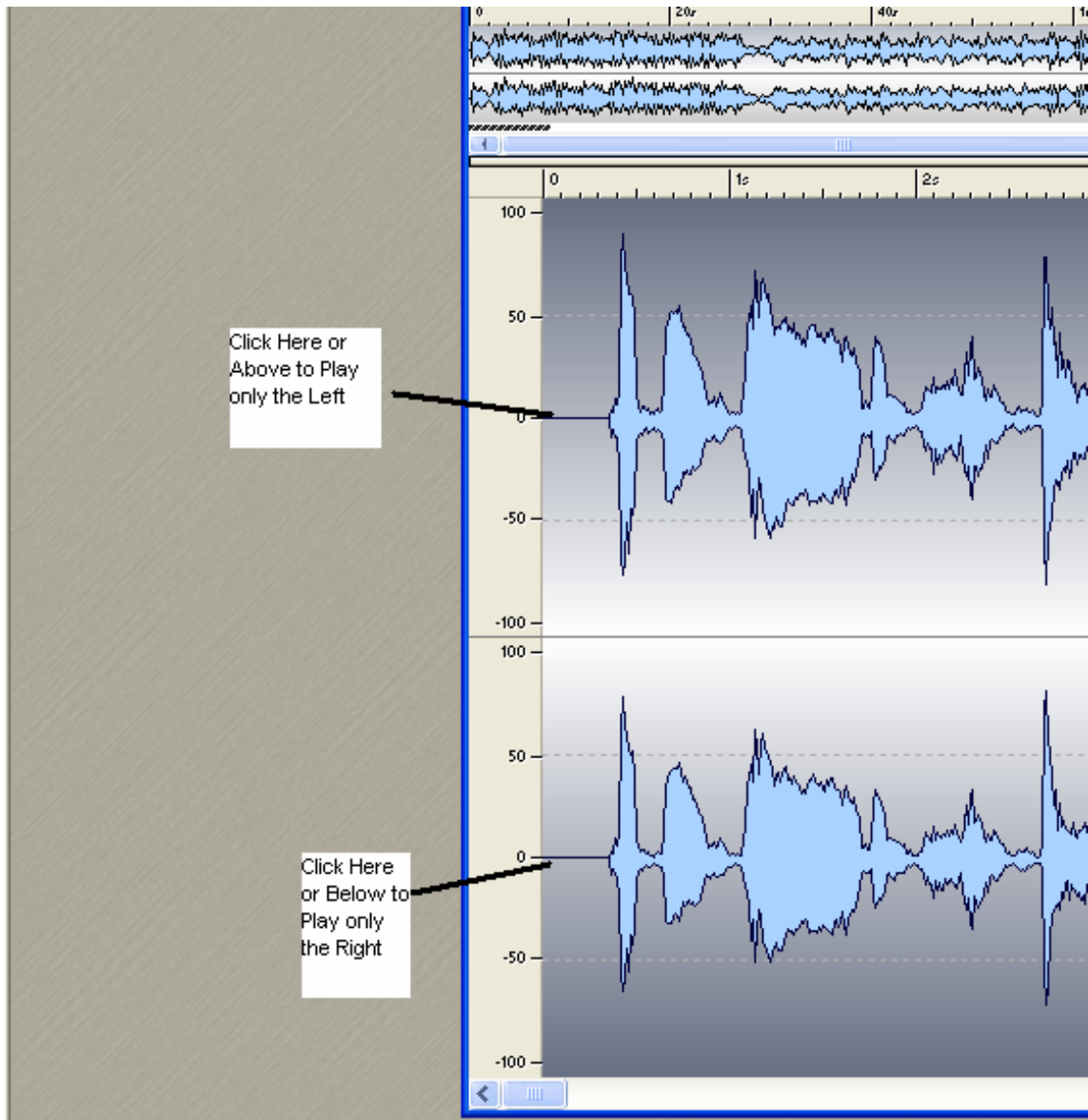
There are situations when you are working with another tool and just momentarily want to use the Play tool.

- To momentarily select the Play tool, hold down [Alt]. When you have finished playing, release [Alt].

Using the Play tool

The Play tool allows you to play back from any position:

1. Point at the position where you want playback to start.
2. If the wave is in stereo, move the pointer up or down to decide whether only one channel should be played back. Playback will select a single channel if you click beyond the zero crossing of the waveform. To hear the left channel click above the zero crossing of the top waveform. To hear the right channel click below the zero crossing of the bottom waveform.



3. Press the mouse button.

Playback continues for as long as you keep the mouse button pressed, or until the wave ends. After playback has stopped, the cursor will be moved to the playback start position, making this a quick way to locate to certain positions in the audio.