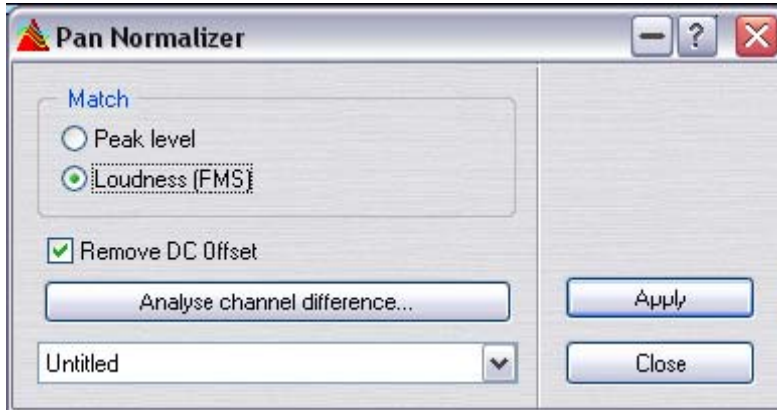


Wavelab 6 - Offline Processing-Pan Normalizer

The Pan Normalizer can ensure that both channels of a stereo file have the same level or loudness. You need to have a stereo selection in a stereo file to apply this process.

- This process requires two passes (analysis and rendering).
- The Pan Normalizer is also available in the Batch processor.



Peak level The channel with the lowest peak level will be raised to match the peak level of the other channel.

Loudness (RMS) This is the most useful mode. The loudness of both channels is first analyzed, and then the gain of each channel is adjusted to get matching loudness levels on both channels. The resulting loudness will be the maximum loudness found during the analysis (in either of the channels). No clipping can be introduced using the Pan Normalizer.

Remove DC offset If any DC offset exists in the file, this will affect the loudness computation. Therefore it is recommended that you keep this activated.

Analyse channel difference This will show you the current Loudness ratio between the left/right channels. The result will differ according to the selected “Peak/Loudness” mode.

Apply Applies the processing.