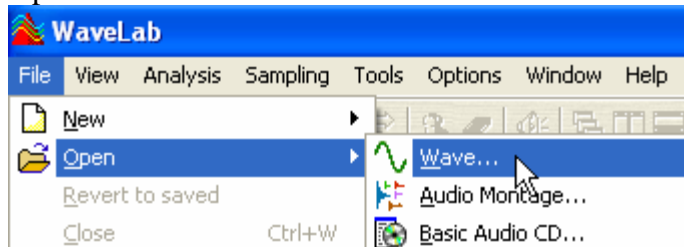


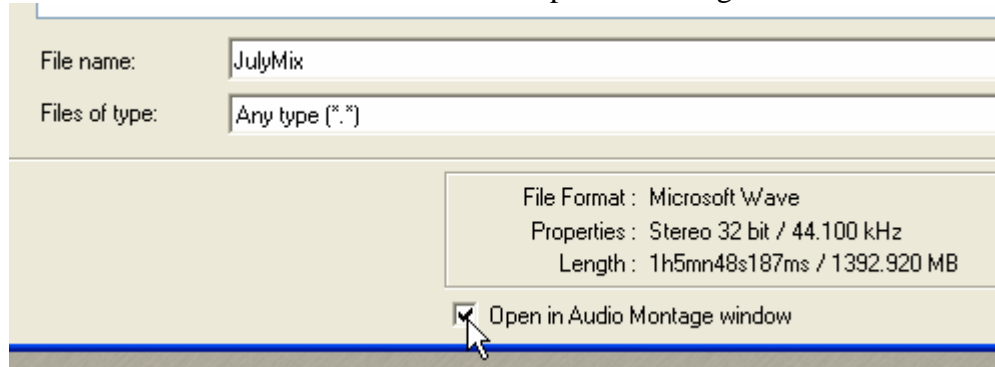
How to track out a mix CD in Wavelab

When djs make mix CD's they almost always record a continuous mix live as one long audio file. Once the audio file has been recorded the next step is to track it out so the listener can skip from song to song with their CD player. Inside Wavelab this process is easy and there is no need to cut the original recording because Wavelab can simply place track markers at the location were a new track is to start. To complete this process follow these steps.

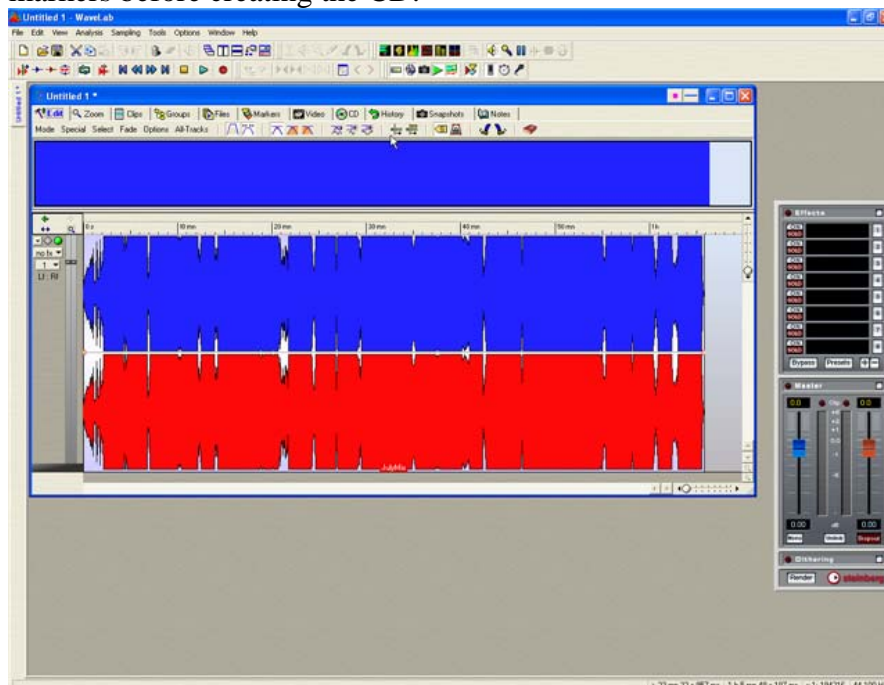
1. Assuming you already have the mix recorded you must find the file on your hard drive and open in a montage within Wavelab. Click on the file menu and select Open>Wave.



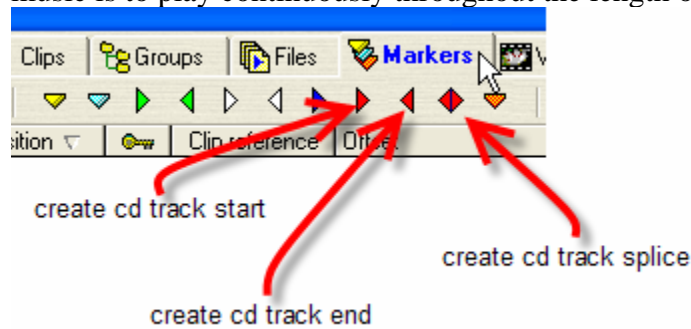
2. Now locate the file and check the box to open in montage.



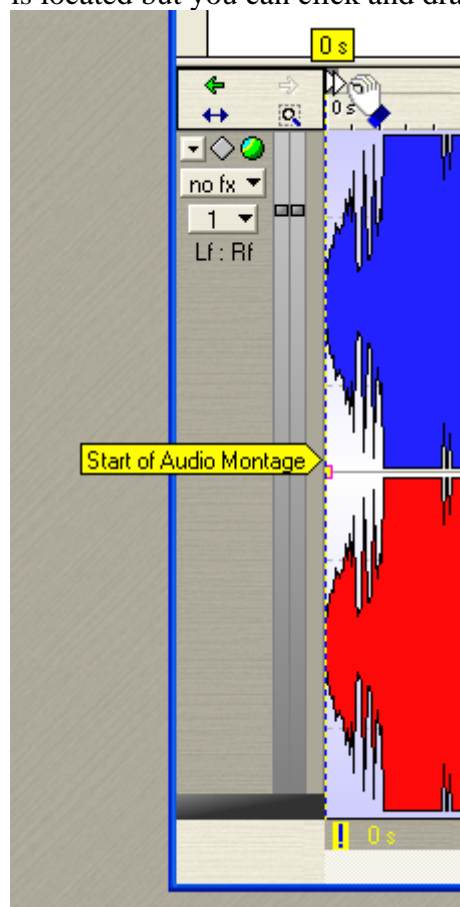
3. The file will now open up in the montage where you have the ability to place the markers before creating the CD.



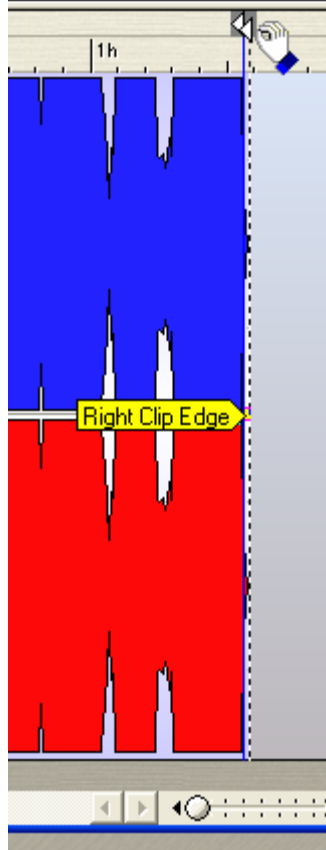
4. Click on the marker tab within the montage. There are three different markers you will use when tracking out a mix cd. The first one is for creating a cd track start. It will be placed once at the beginning of the mix to designate the start of the first track. The next one is for creating cd track splices. It will be used to designate the end of one track and the start of the next track. The third and final marker is used for creating a cd track end. It will be placed at the very end of the mix to designate the end of the last track. Using cd track splices is really useful for making mix cd's because it allows the separating of tracks on the cd without the two second gap between songs. This is absolutely necessary for a mix cd were the music is to play continuously throughout the length of the cd.



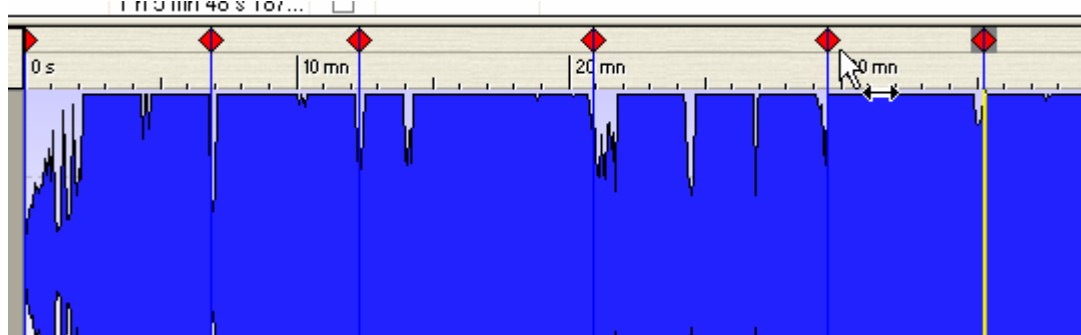
5. Place the 'create cd track start' marker at the beginning of the audio montage. When you click on the marker button it will place the marker wherever the cursor is located but you can click and drag the marker to the position of your choice.



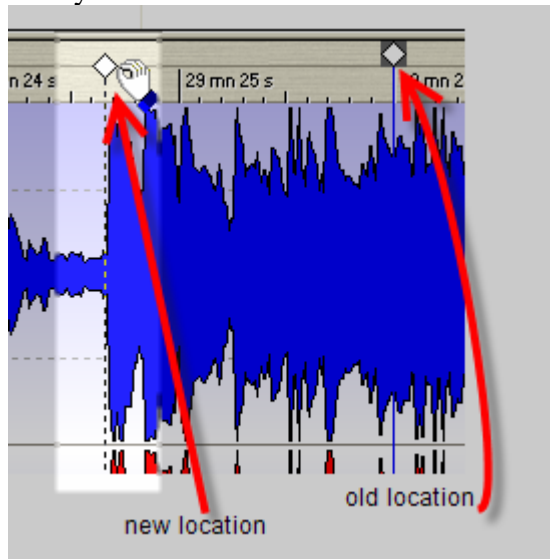
6. Now place the 'create cd track end' marker at the end of the audio montage.



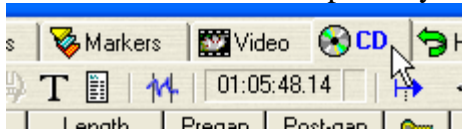
7. Now that the start and end of the montage have track markers you must place the 'create cd splice' markers along the montage at the locations you prefer. Typically you would place these markers in the area were you mixed from one song to another.



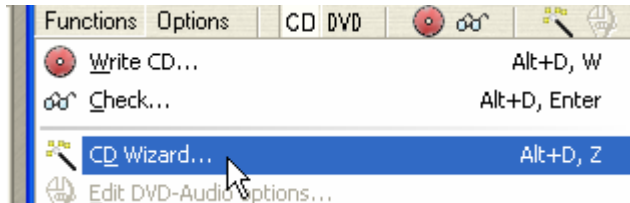
8. Once the markers have been placed in the montage you can fine tune their location by zooming in closer on the file and moving the markers to the exact spot you would like them to be at. A good method of zooming in is to click and hold on the timeline in the location you have already placed the marker and pull down with your mouse.



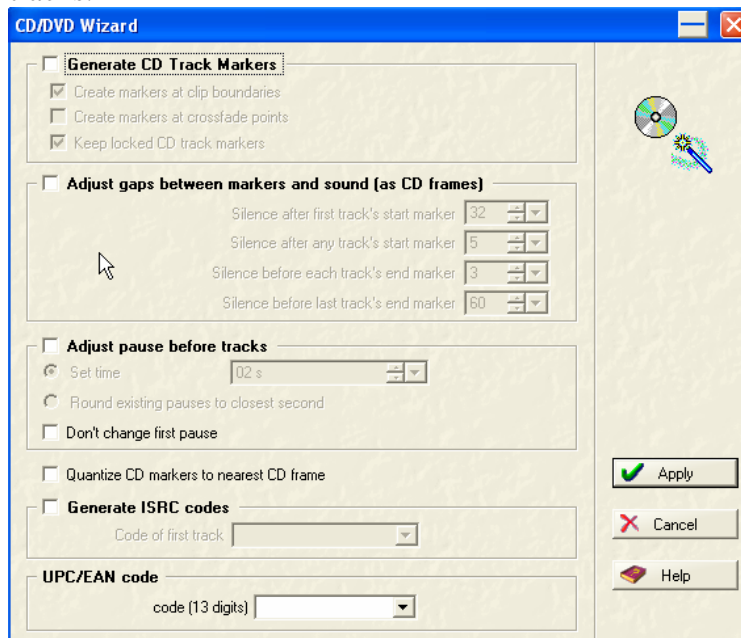
9. After all the markers are placed you can now burn the cd. Click on the cd tab.



10. Next click on the functions menu and select CD Wizard.



11. Make sure all boxes are unchecked and click apply. This will allow your cd to be created with no changes of the placement of track markers or pause between tracks.



12. Now click on the Write CD button. This will bring up the Write Cd dialog box where you can make settings for the drive you want to use and the speed in which you would like to burn the cd. If you are making multiple copies you make set the quantity as well.

