

## Wavelab 6 - MTC Sync

MIDI Time Code provides timing information, so that each time position coincides in the master (the other recorder, MIDI sequencer, etc.) and the slave (WaveLab). However, there is still one problem: Even though WaveLab starts playback of an audio file at the exact correct position, it cannot affect the timing of the audio file once playback is started. At that point, the playback of the audio file is only dependent on the clock on the computer's audio card.

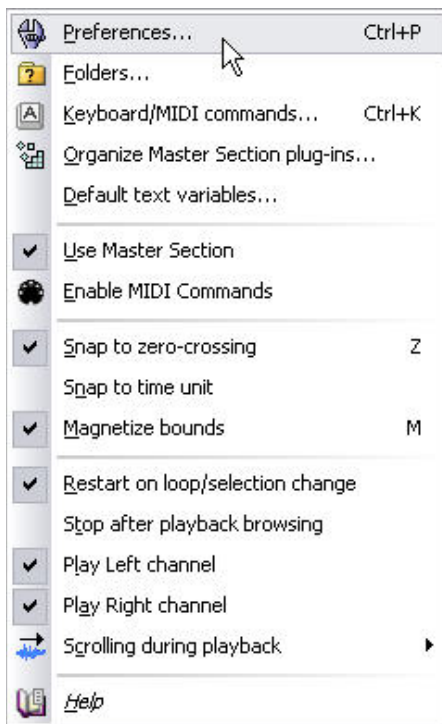
The solution is to not only synchronize Wavelab, but also the audio card. This means that you need:

- A synchronization device that can send both MTC and word clock.
- An audio card that can read and synchronize to incoming word clock.

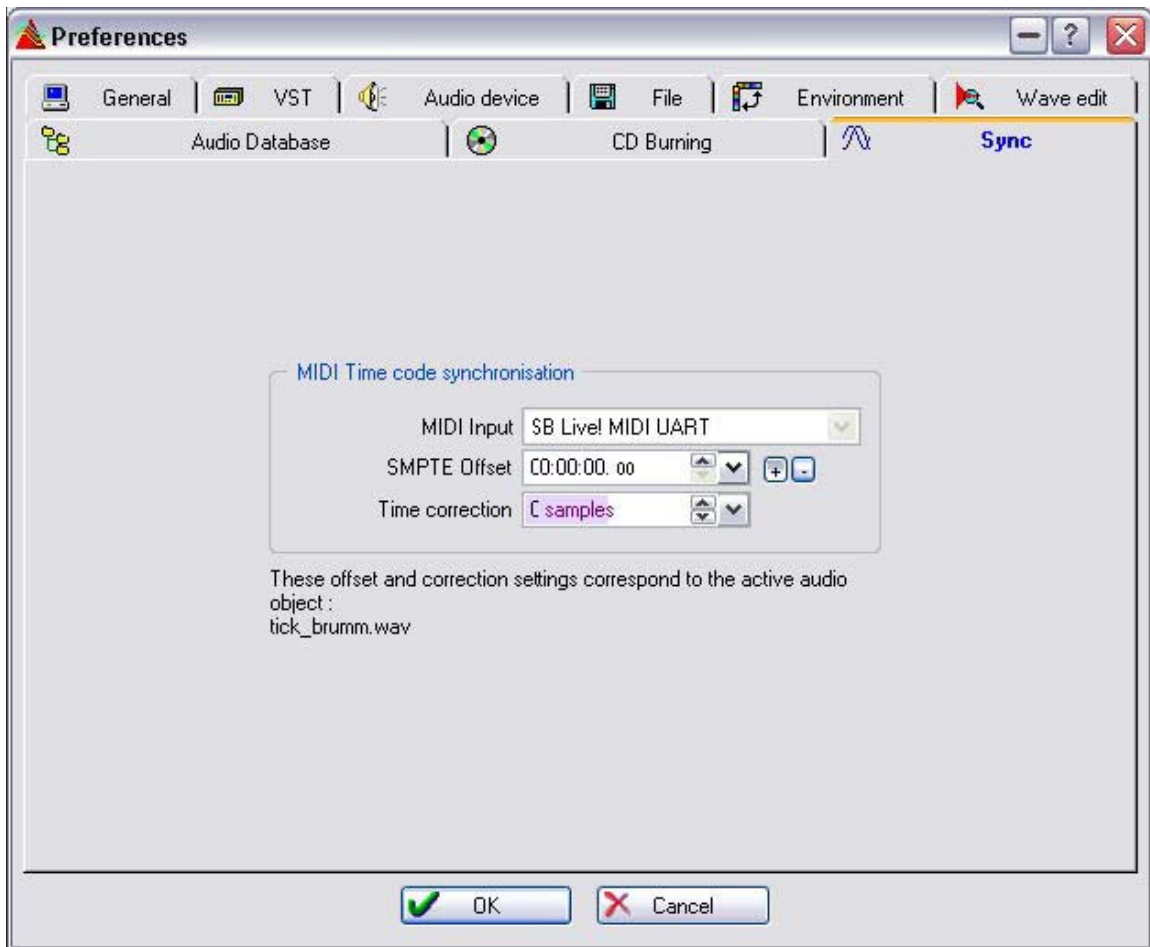
With this setup, the master device sends MTC into Wavelab (ensuring that audio playback starts at the correct time position) and word clock to the audio card (ensuring that audio playback continuously follows the master device).

Make sure the desired Montage or Wave window is active.

Pull down the Options menu and select Preferences.



Click the Sync tab.



Pull down the MIDI Input pop-up menu and select the MIDI Input port to which your synchronization device is connected.

If the time code in the master device is offset (so that playback starts at a time position other than zero), you need to compensate for this in WaveLab by setting the SMPTE Offset parameter to the same value:

If the SMPTE Offset is positive, click the [+] button next to the SMPTE Offset parameter. If SMPTE Offset is negative click the [-] button.

Set the SMPTE Offset parameter to the time position when you want playback to start. This should be set according to any offset values in the master device, so that both devices have the same start position. The offset value is subtracted from (+ button activated) or added to (- button activated) the incoming time code. Usually, positive offset values are used. If you edit this value during playback you have to stop and restart for the change to take effect.

---

*Each Audio Montage can save its own SMPTE offset. When you edit the offset in the Preferences dialog, you actually edit the offset of the currently active audio document.*

---

## Activating MIDI Sync

Click the playback start position icon to the left on the Transport bar.

Select “Sync from MIDI Time Code” from the pop-up menu. The button changes shape to a MIDI symbol, indicating that WaveLab is in MTC Sync mode.



WaveLab is now expecting MIDI Time Code, and will start playback when the master device is started. If the MIDI Time Code stops, WaveLab will stop playback but remain in Sync mode.

To exit Sync mode, select another playback start position option from the pop-up menu, press [Shift] + [F9] or stop playback manually.