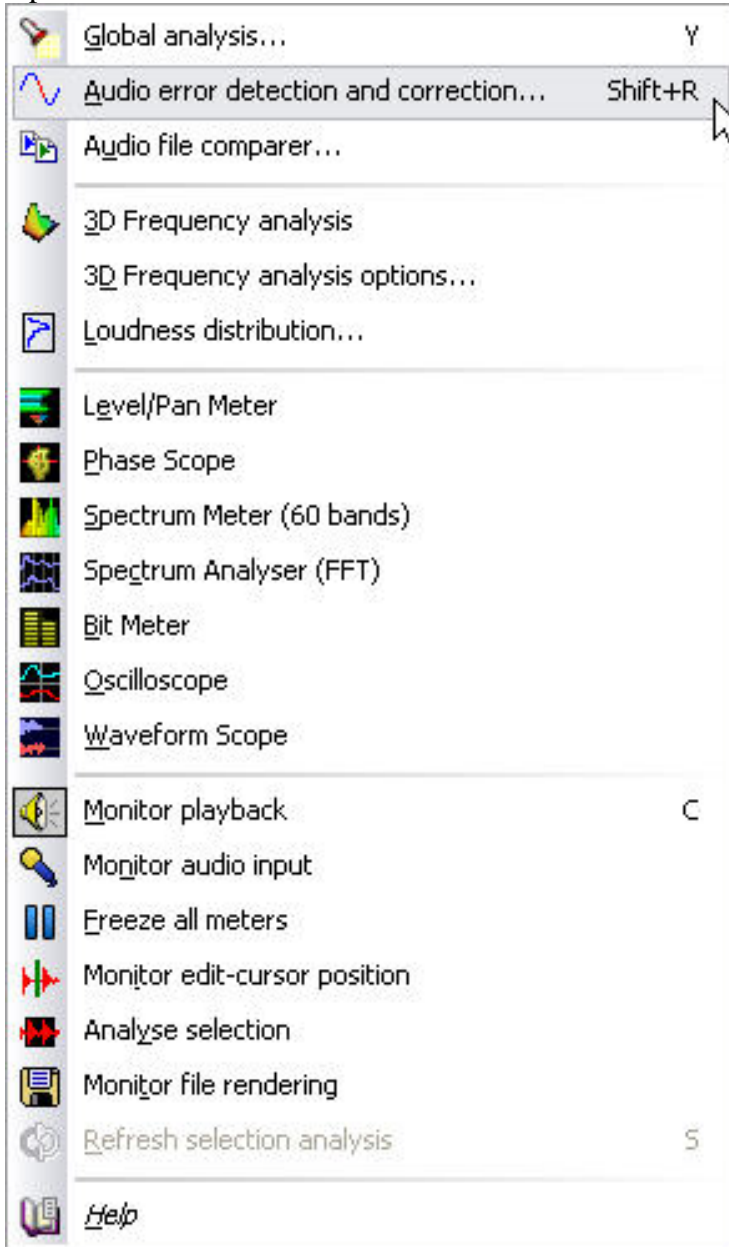


Wavelab 6

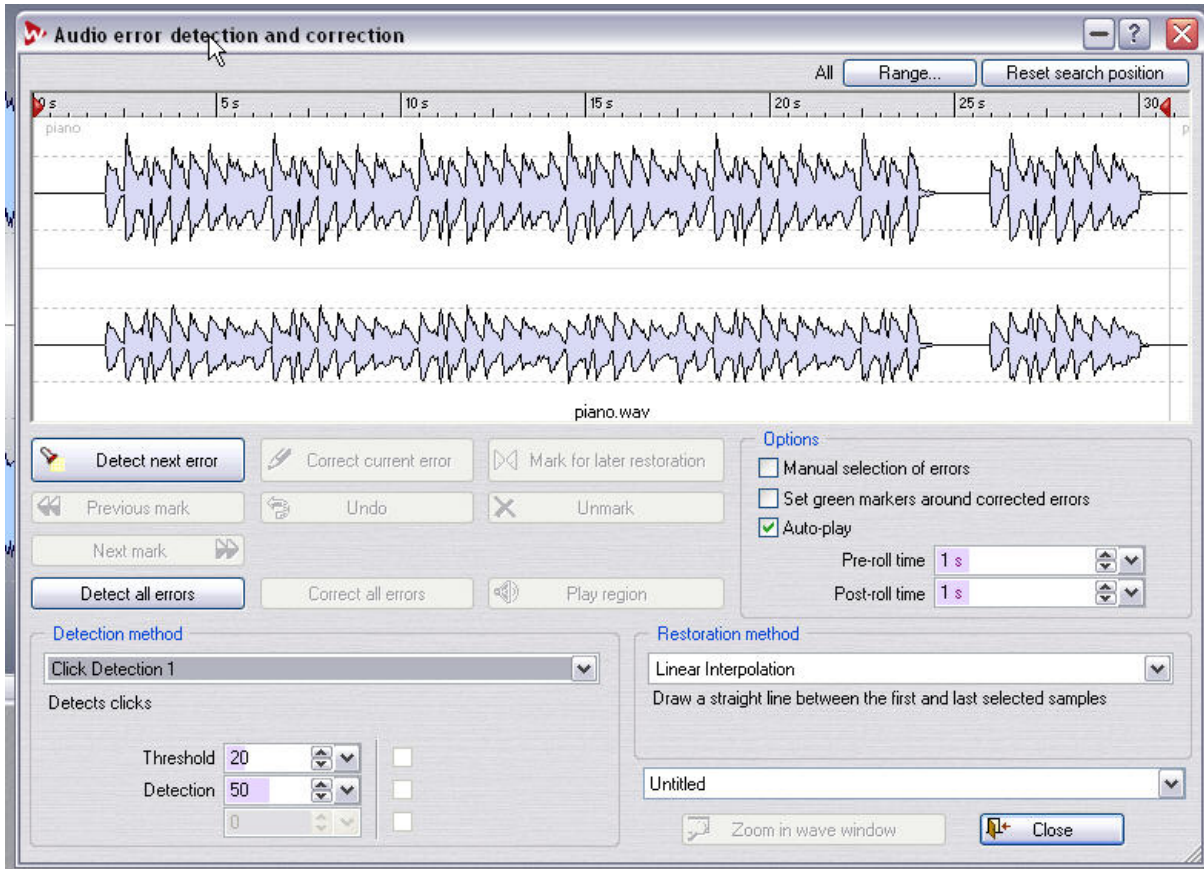
Error Detection and Correction - Automatic Detection and Correction

Open the file you wish to process.

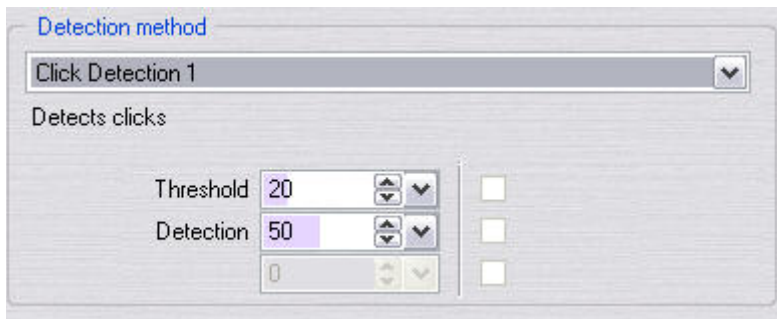
Open the “Audio error detection and correction” from the Analysis menu.



The Audio error detection and correction screen appears.



Select one of the detection methods available on the Detection method pop-up menu. The methods Click Detection 1 and 2 will search for clicks in certain frequency ranges and the method Digital Click Detection looks for clicks that are caused by a single sample.



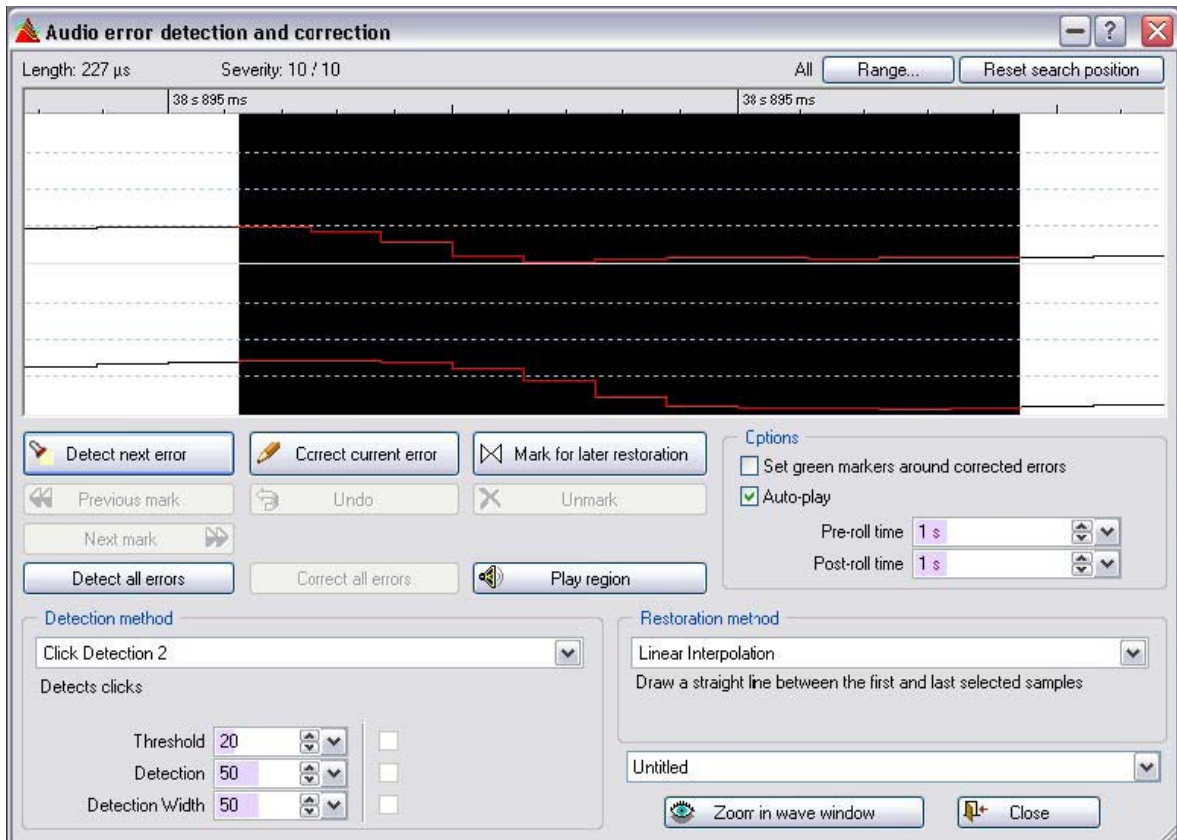
Depending on which method you have selected, different detection parameters are available:

Threshold: The lower the value you set for this detection threshold, the smaller or softer clicks are detected.

Detection: This parameter lets you set the lower limit of the analyzed frequency range. Available for the Click Detection 1 and 2 methods.

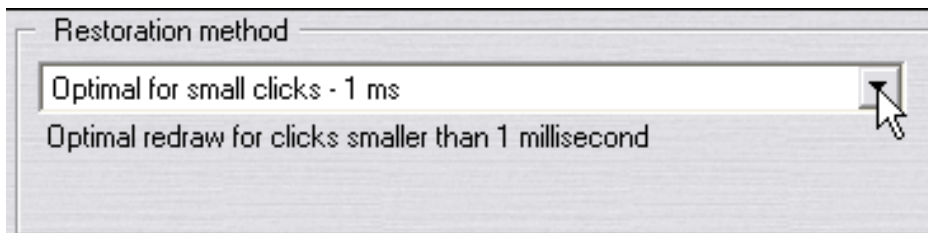
Detection width: this is used to set the width of the analyzed frequency range. Only available when using the Click Detection 2 method.

Click on the “Detect all errors” button to start the search for all detectable errors. WaveLab will now search the complete file and insert a pair of markers for each found error.



This is an example of when Wavelab finds an error.

In the Restoration method pop-up menu, select one of the available options. A description of what the selected method does is displayed below the pop-up.



Click on the “Correct all errors” button. WaveLab will now automatically correct all errors it has detected.