

Wavelab 6 - The Effects Pane

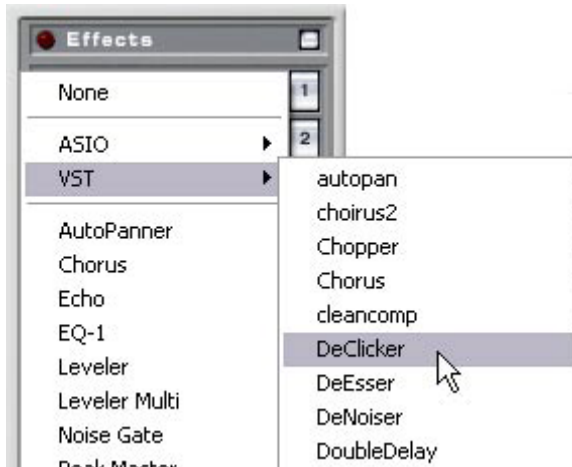


WaveLab allows you to insert up to eight effect plug-ins in series (plus an additional, post-master fader plug-in, normally used for dithering.) Three plug-in formats are supported in the Master Section:

- WaveLab-specific plug-ins, included with the program. This also includes a submenu; “ASIO”, which by default contains the Audio Input and External Gear plug-ins. These are only available if you are using an ASIO driver.
- VST plug-ins.
Steinberg’s VST plug-in format is supported by a lot of programs and plug-in manufacturers. You will find a number of VST plug-ins included with WaveLab; other plug-ins can be purchased separately from Steinberg or other manufacturers or in some cases downloaded from the Internet. Note also that if you have Cubase installed on your computer, the effects that were included with Cubase can optionally also be available in WaveLab (provided that they are installed in the “Shared VST Plug-ins” folder, see the Cubase documentation for details). Whether the effects in the “Shared VST Plug-ins” folder should be available in WaveLab or not is set in the Preferences–VST tab. You can also specify an extra VST plug-ins folder in the Preferences if you wish, meaning that you can have access to both the effects in the “Shared VST Plug-ins” folder and the effects in some other folder containing VST plug-ins.
- Plug-ins that adhere to the Microsoft DirectX standard. These are known as DirectX or DX plug-ins and are also widely available.

Selecting an Effect and Managing Slots

To select an effect plug-in for a slot, left-click on the slot (or the numbered button to the right of the slot) and select an effect from the pop-up menu that appears. Note that effects can be organized in groups, in which case they will appear in hierarchical submenus.

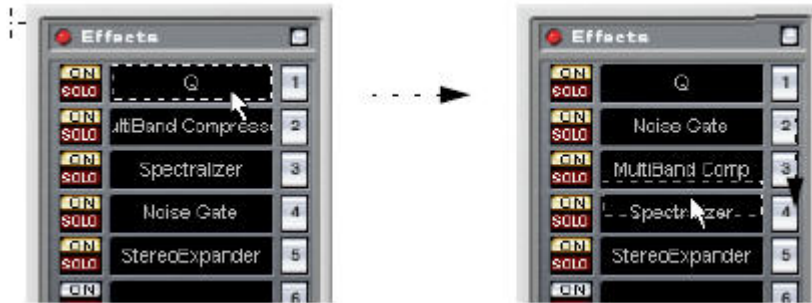


The number of effects available on the menu depends on which plug-ins you have installed. It's also possible to globally deactivate or exclude effects you don't need.

When you have selected an effect, it is automatically activated (the on button lights up), and its control panel appears as a separate window.

- You can turn off an effect (without removing it) by clicking its on button. To activate the effect again, click the on button so that it lights up.
- To hide the control panel for an effect, right-click its On button (or right-click the effect slot and select Hide from the pop-up menu that appears). A hidden control panel can be shown by right-clicking the on button again (or by selecting Show from the same pop-up). You can also have one effect panel shown and automatically hide all the other panels, by right-clicking the Solo button for the slot.
- Clicking the Solo button for an effect will bypass all other effect slots, allowing you to check the sound of that effect only. You can also bypass effects manually in their control panels.

- You can change the order of the slots (and thus the order in which the signal passes through the effects) by clicking a slot and dragging it to a new position. When you drag, a dotted outline shows the position of the slot.



- To remove an effect from a slot, right-click the slot and select remove from the pop-up menu that appears. This is the same as selecting “None” from the effect selection pop-up menu.