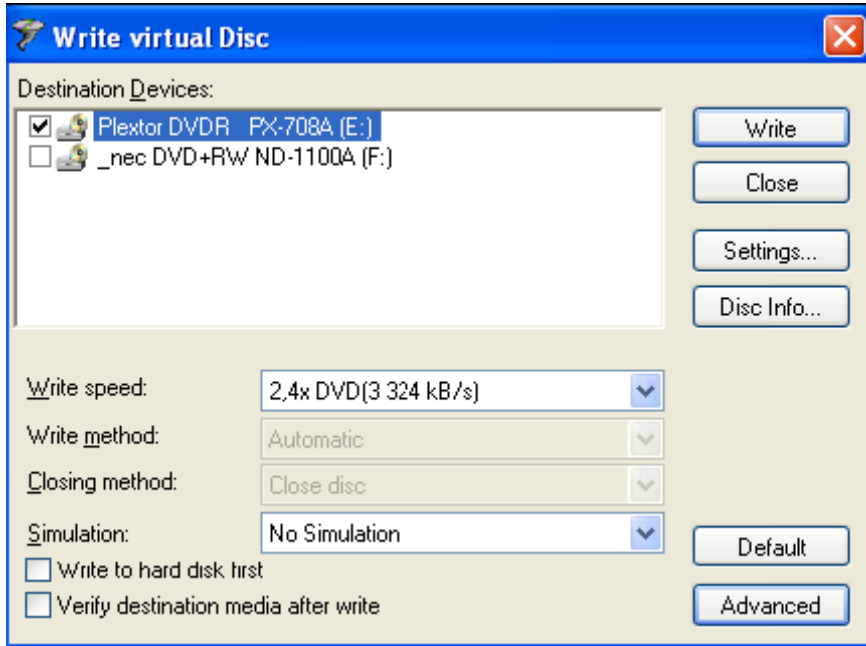


Wavelab 6: Burning a DVD

When you select “Write CD/DVD...” on the Destination window’s CD/DVD menu, you will first be asked for a name for the CD or DVD to be created.

After entering a name and clicking OK, the “Write virtual Disc” dialog appears. Here you can make all the necessary settings for the CD or DVD to be recorded.

- If you burn a DVD-Audio to a DVD-RW that already contains data, you will be asked if you want to create a new session. In that case you will have to click “No” and erase all the data on disk.



Item	Description
Write	The CD/DVD writing process is started.
Close	The dialog is closed.
Settings	This opens a dialog where you can make settings for your CD/DVD recorder. The content of this dialog depends on the recorder used.
Disc	Info If a writable disc is in the CD/DVD recorder, you can use this option to get information about its size and available space.
Write speed	Here you can select a write speed supported by your recorder.
Write method	Here you can select a Write method supported by your CD recorder. If you are adding the data portion to a CD-Extra CD, you must select “Track At Once”. For DVD, there are no write method options.
Closing method	Here you can select a closing method. If you are adding the data portion to a CD-Extra CD, you must select “Close CD”.
Simulation	Here you define if and how a simulation should be performed before the actual writing process. Simulating the writing process lets you find out whether the writing process will be successful, or if problems might occur.

- Write to hard disk first If this function is active (ticked), the writing program first writes an image file onto your hard disk (which must have enough free space to hold the file). An image file has the advantage that the data to be recorded doesn't have to be converted into CD format during burning, as this is done when the image file is created. The actual burning (recording) procedure will therefore be faster and performed with greater reliability and less risk of malfunction.
- Default Click on this button to save the current dialog settings as default. The next time you open the dialog, they will automatically be set.
- Advanced If you click the "Advanced" button, the dialog is extended downwards and you get access to five tabs. These let you make a number of additional settings for the writing process.

Note that at the end of the DVD burning process it can take up to 15 minutes to close the DVD. Please be patient.