

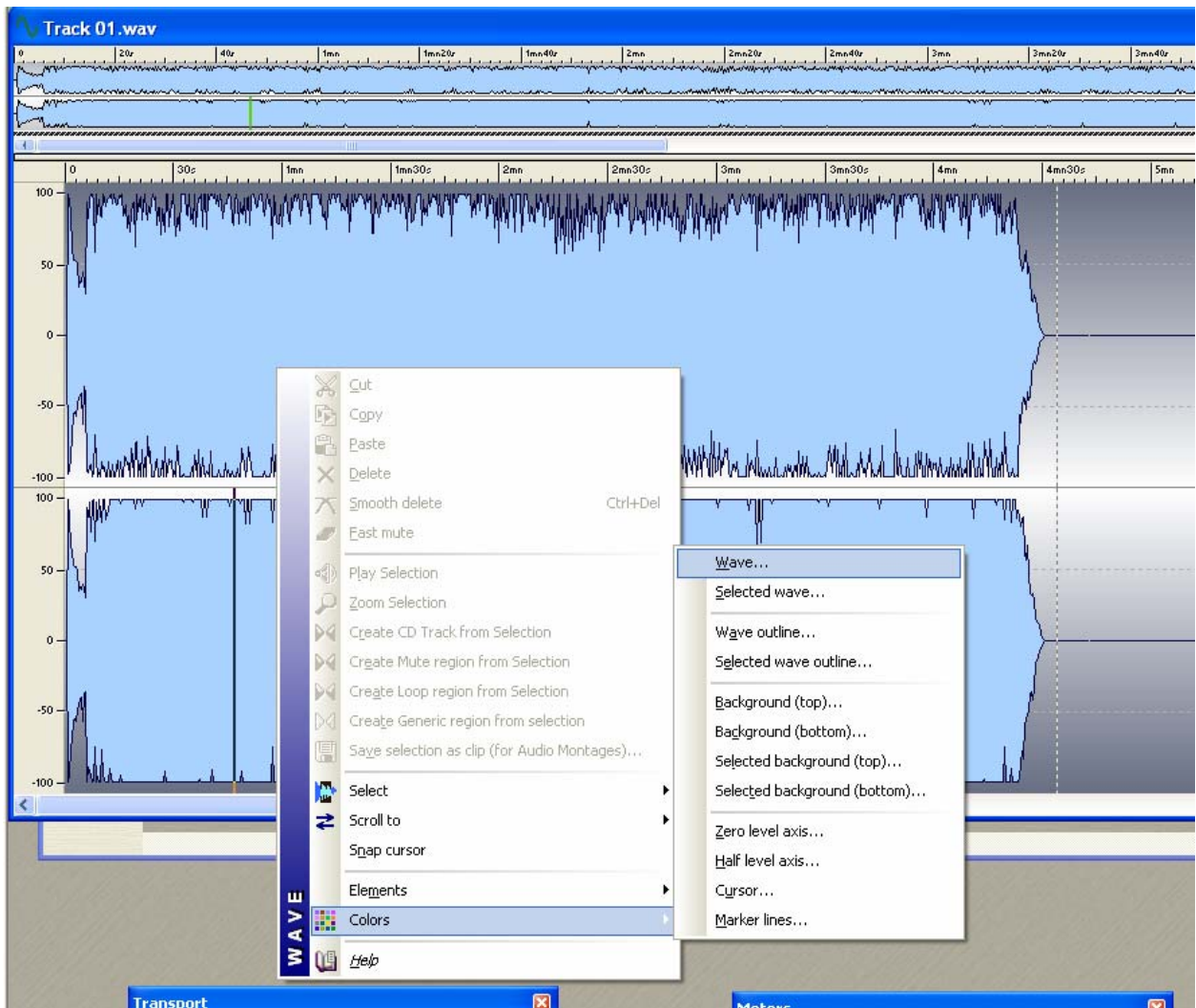
# Wavelab Color

Q: How do I change the color of the Waveform in Wavelab 6?

A: Right-click and choose “Colors.”

## Colors

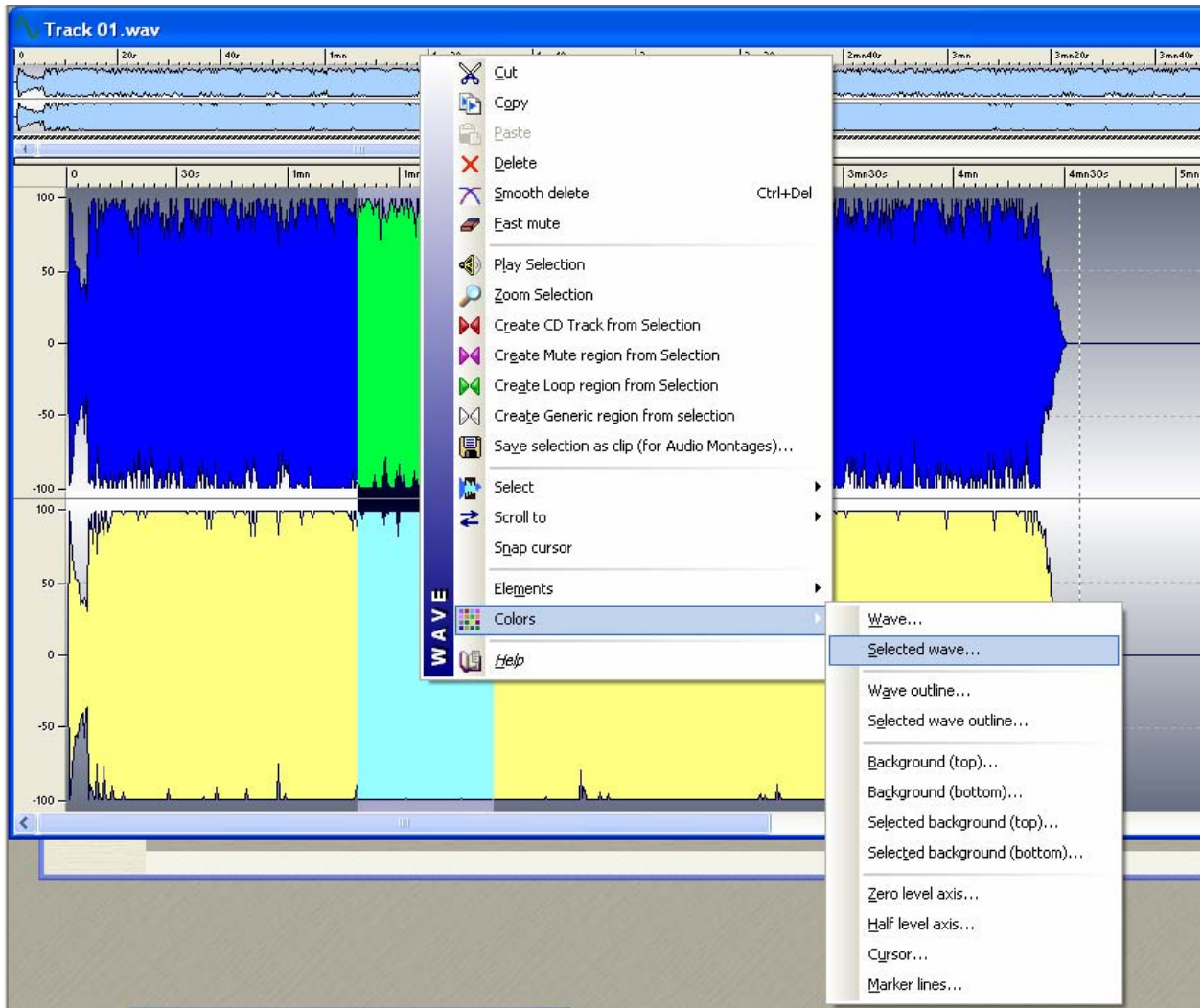
To set the color of a certain element in the display, right-click in the Wave window, select Colors and then select an element from the submenu that appears. In the standard Windows color dialog that appears, select or define a color and click OK.



- For the display background colors, there are separate “top” and “bottom” settings – the resulting display background will be a gradient “fade” from the top color to the bottom color.

If you prefer a single background color (or if you need to speed up display redraws, typically with slower graphic cards), you can turn this feature off by activating “Do not

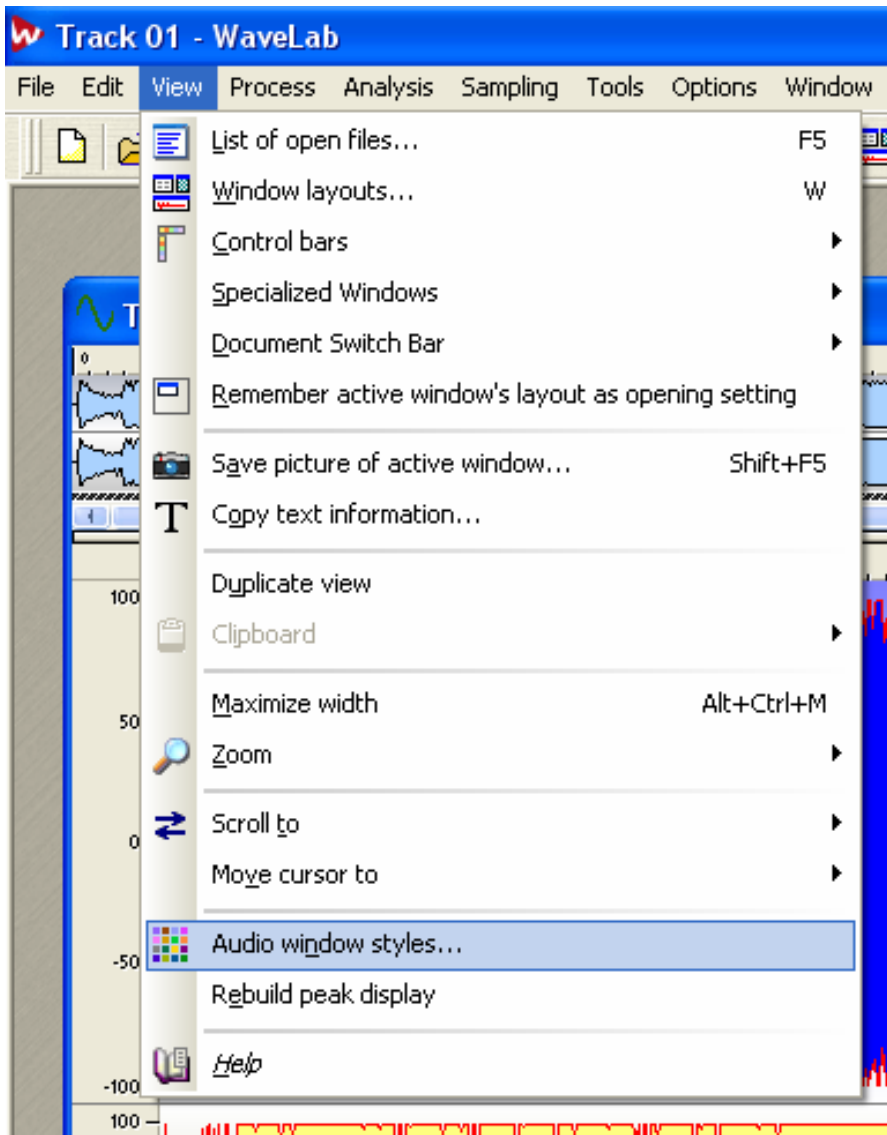
use gradient backgrounds” in the Preferences–Environment tab. The background color will then be a 50/50 mix of the top and bottom color.



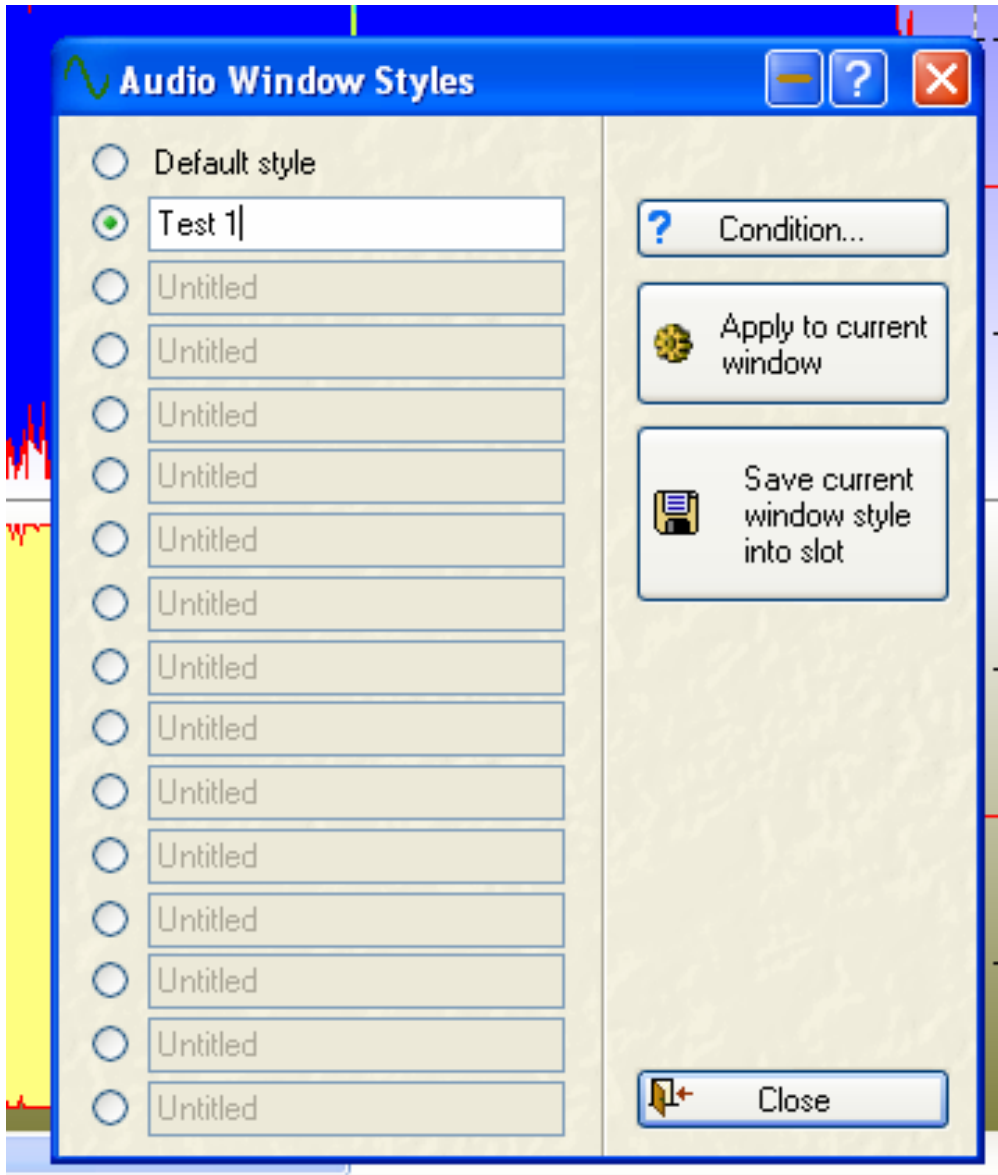
Again, when changing colors for the waveform images, you make separate settings for the main waveform display, the overview and for the two channels in a stereo file, depending on where you click.

### **Saving the Colors as Templates**

You can save the color scheme of your waveform by going to View – Audio Window Styles.



In the menu, select a new slot and give the scheme a name.



Click “Save Current Window Style into Slot” and the next time you open this window you will have the option to load your color settings.


## Audio Window Styles




- Default style
- Test 1
- Untitled
- Untitled
- Untitled
- Untitled
- Untitled
- Untitled
- Untitled
- Untitled
- Untitled
- Untitled
- Untitled
- Untitled
- Untitled
- Untitled

? Condition...

 Apply to current window

 Save current window style into slot

 Close