

Wavelab 6 - CD Markers

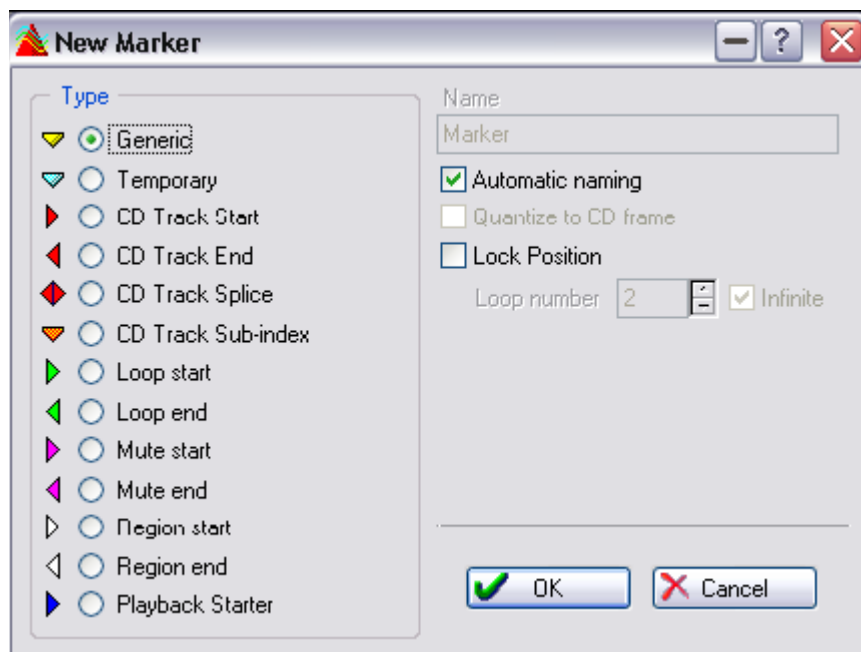
You edit and add CD markers using any of the following methods:

- By adjusting positions of existing CD markers.

This is done by dragging, as with any marker.

- By converting existing “Generic” or “Temporary” markers into CD type markers.

This is done by right-clicking on a marker and selecting “Edit marker”.



Basic Audio CD and CD Markers

- A track in the Basic Audio CD is defined by a track start or track splice marker in the actual audio file! Delete the track start/splice marker, and the track item vanishes from the list! Also, edit the track start or end position, and the change is reflected in all Basic Audio CDs that include this track.

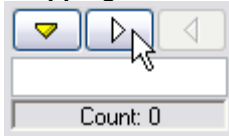
- Just because you create the markers for it, this does not mean the track will be added to a Basic Audio CD window. You have to do this “manually”, using drag and drop to the desired Basic Audio CD(s). As a matter of fact, you can have several tracks defined in a single audio file, but still decide to only use one or a few of them in a Basic Audio CD.

- Whenever you create a track start marker, Wavelab will automatically create a track end marker at the start of the next track or at the end of the file, whichever occurs first. It’s then up to you to adjust the position of that end marker if you like.

- Wavelab does not allow tracks that start but have no end. Neither will it allow overlapping or nested tracks (tracks inside tracks). If you try to move track markers to invalid places (beyond the end of the file, to a position inside another track, etc.), Wavelab will automatically reorganize the markers to a valid configuration.

- The track splice marker indicates the end of one track and the start of another. In other words, it's a combined start and end marker. If you drop a start marker after another start marker, it will automatically convert into a splice marker since you can't have two starts after each other without an end between them.
- If you use one file in multiple Basic Audio CDs, beware that any changes you make to the audio file will be reflected in all Basic Audio CDs!
- Sub-index markers can be added between starts and ends as required. The only limitation is that there can only be 98 sub-index markers per track. You can't insert a sub-index outside a CD track. If you move a sub-index out of a CD track, it is deleted.
- Whenever you insert a sub-index, its position is quantized to a CD frame ($1/75^{\text{th}}$ of a second, or 588 audio frames) relative to the track start. If you move the CD track start marker, all sub-index markers will need to be re-quantized. You will be warned about this via an alert box. This is usually not a problem, since you will normally only start defining sub-indexes once your start and end points have been established.

Dropping markers during recording



When you are recording, you can click the marker buttons at any time, to add a marker to the recorded file. The yellow button will generate a numbered, generic marker, while the white buttons will generate numbered, generic region start and end markers. The Markers can later be converted to CD markers.