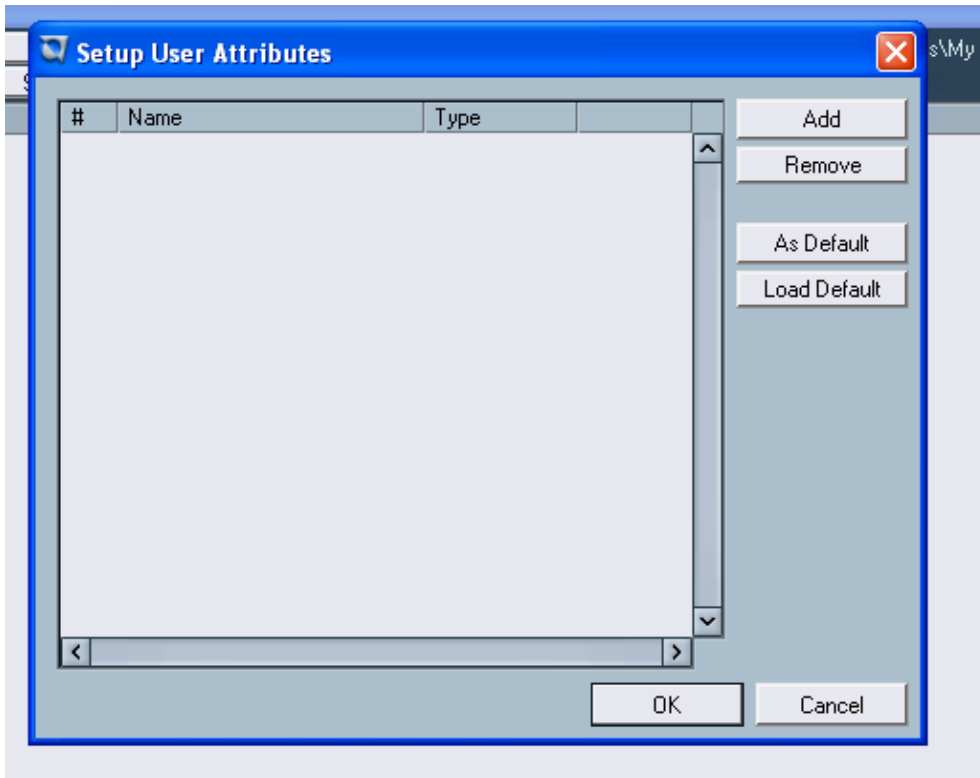


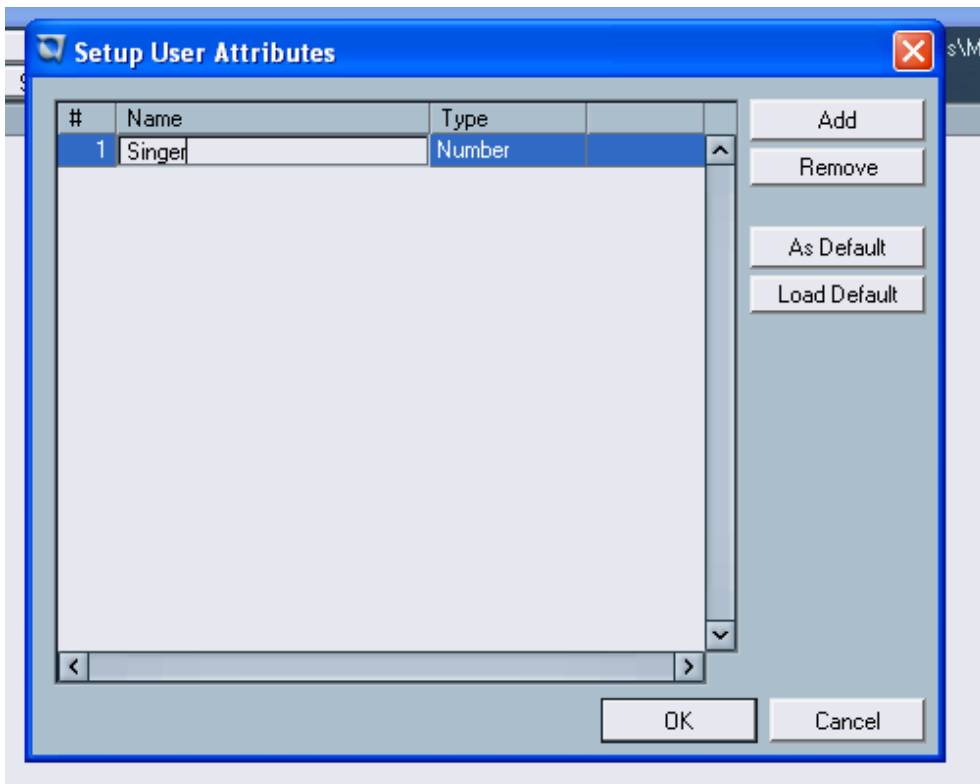
Nuendo - User Attributes

You can define your own attributes for elements in the pool. Simply select the “Define User Attributes” from the View/Attributes pop-up and create as many new attributes as you need. Each attribute can be either a number, text or a simple check mark. You can use them to sort items in the pool or merely keep track of some aspect of your project.

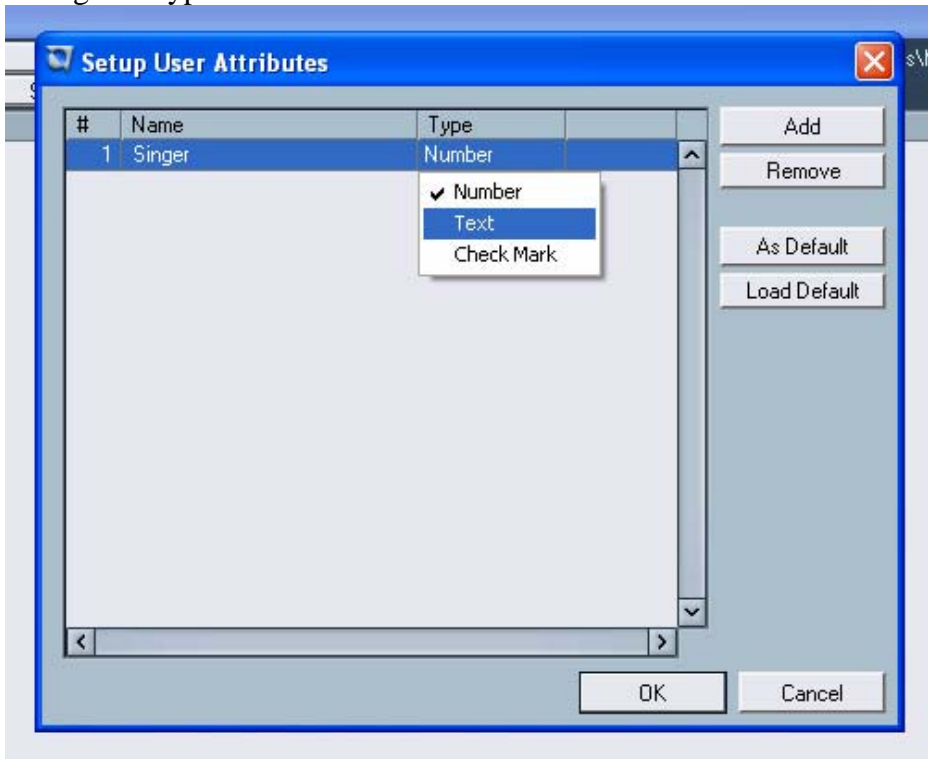




Click the Add button, and we will create a column to state in text whether the singer on a file was Shawn or Adrian.



Change the type to Text.



Now there is a column in the pool for Singer.

