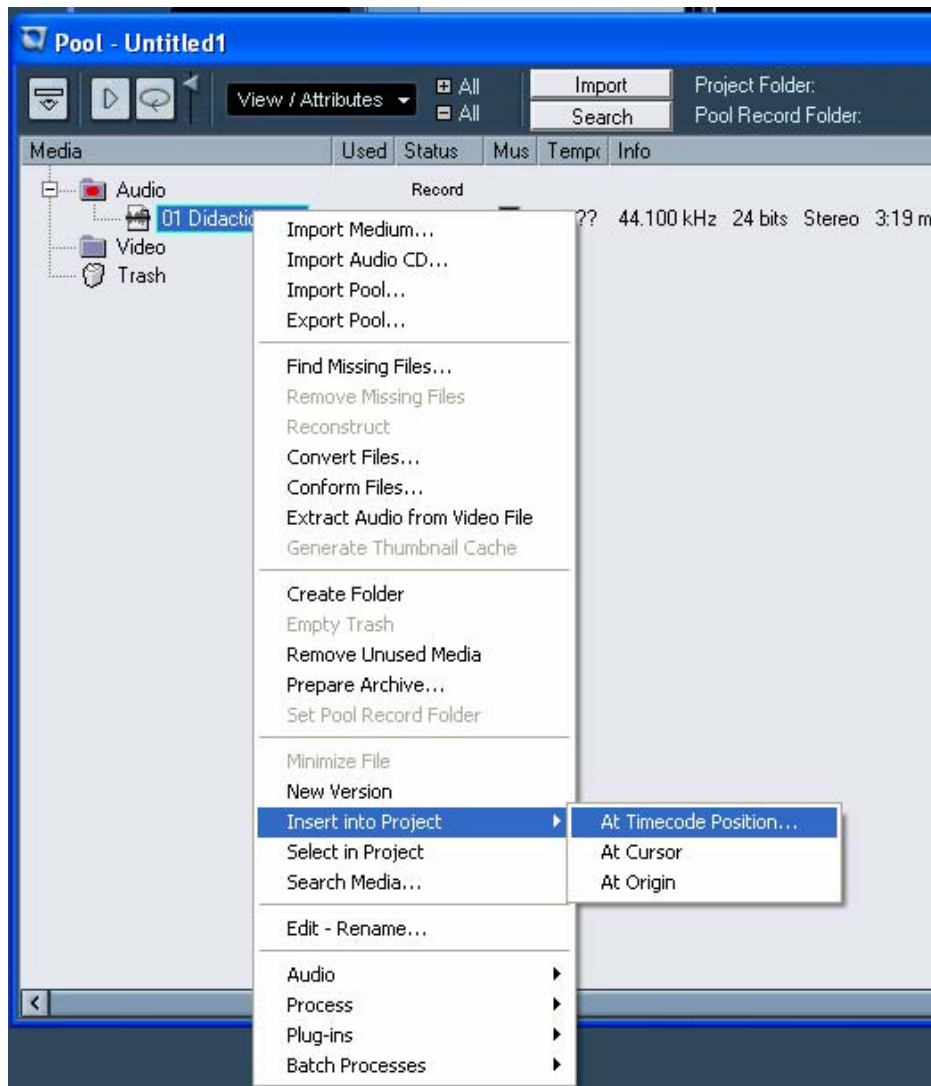


Nuendo - Insert at Timecode Position

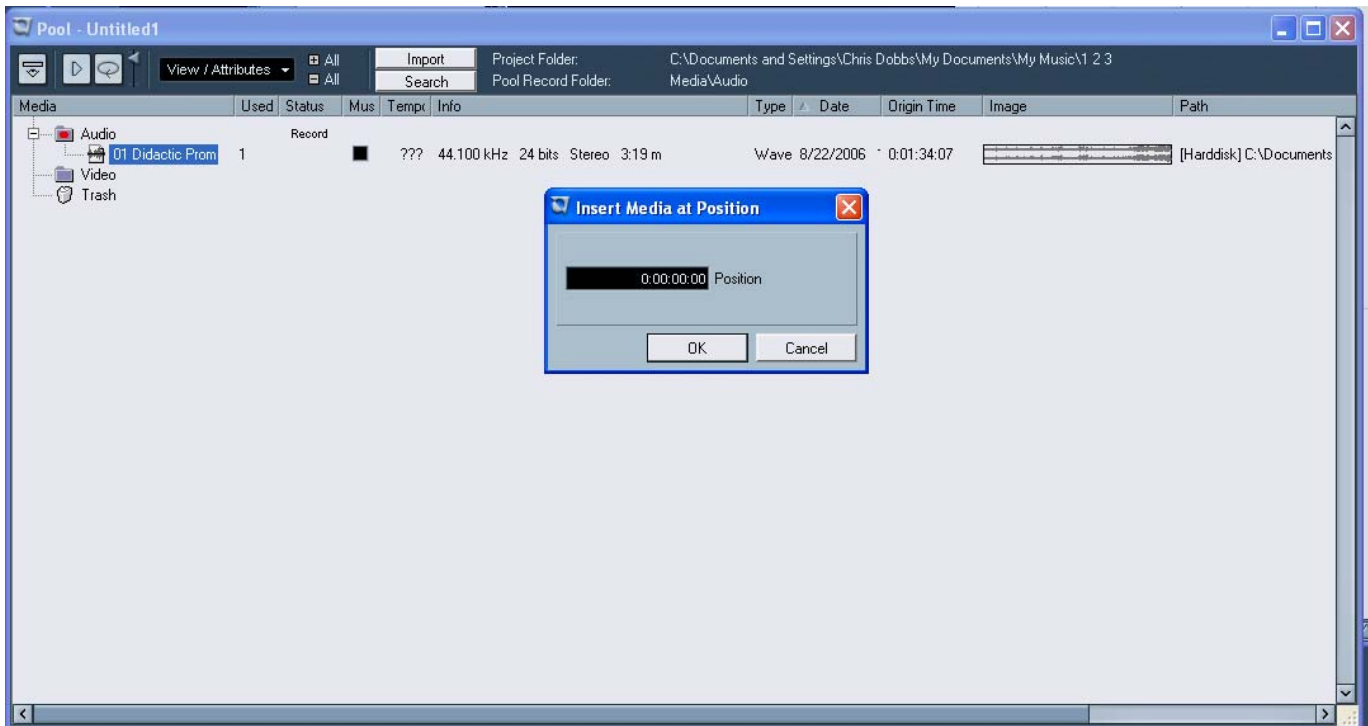
Q: How can insert a file to a specific place in my project?

A: Use Insert at Timecode Position.

The command Insert into Project at Timecode position enables the user to quickly transfer events from the pool into the project at specific time code positions. First import a file into the pool. In the pool right click on the file and go to Insert into Project – At Timecode Position.



This will open a dialog box in which you can choose the Timecode position.



Enter the desired position



Hit OK and you're all set.

