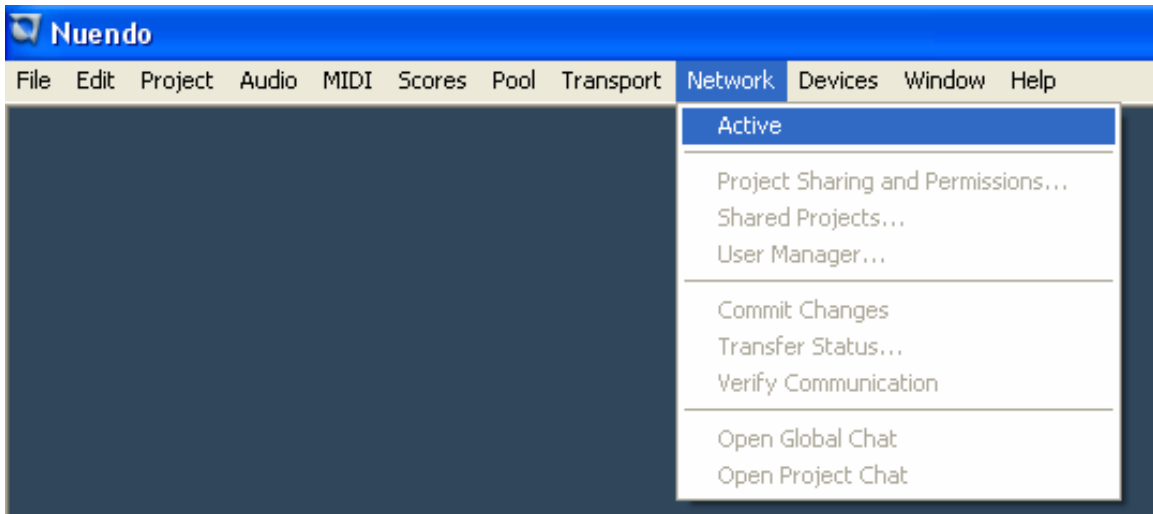


Nuendo - Networking Basic Setup

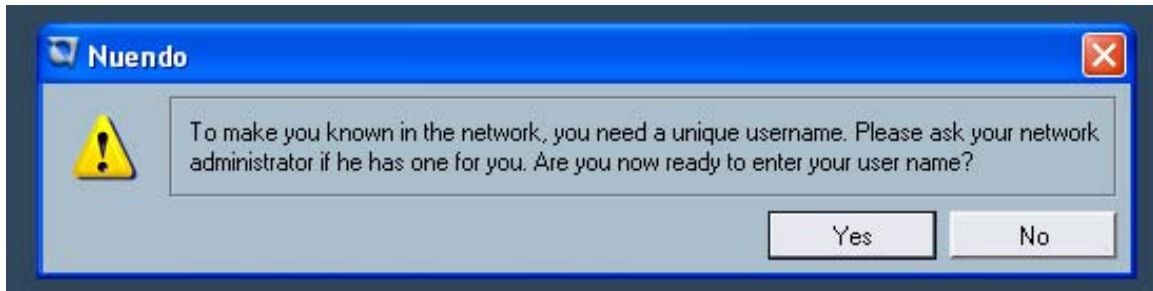
Q: How do I setup two computers to network Nuendo?

A: Follow these instructions.

1. Launch Nuendo on two computers that are connected by a network of Ethernet cables.
2. Activate the network control by pulling down the Network menu and checking the "Active" item.

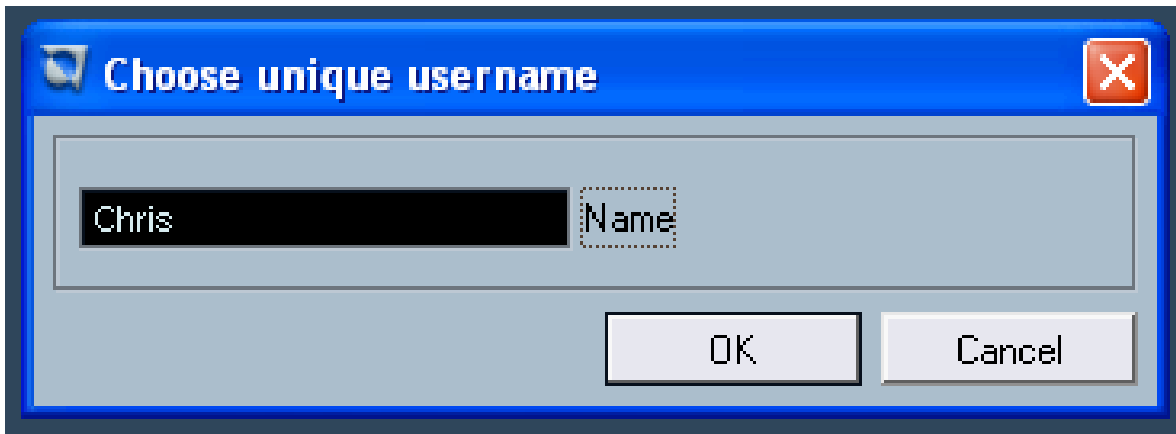


3. At this point, a dialog opens asking whether you want to enter a unique user name to identify your computer in the network. This is the name that will be displayed in all the network dialogs to identify you to the other users in a network.



- Each user in a network *must* specify a user name, or network name, in order to be identified in the network. However, you don't have to do this now, since you can do it at a later time if you wish.

4. Click "Yes" if you want to enter your user name. If you don't want to enter a user name at this point, click "No". If you click "Yes", another dialog opens in which you can enter your user name.

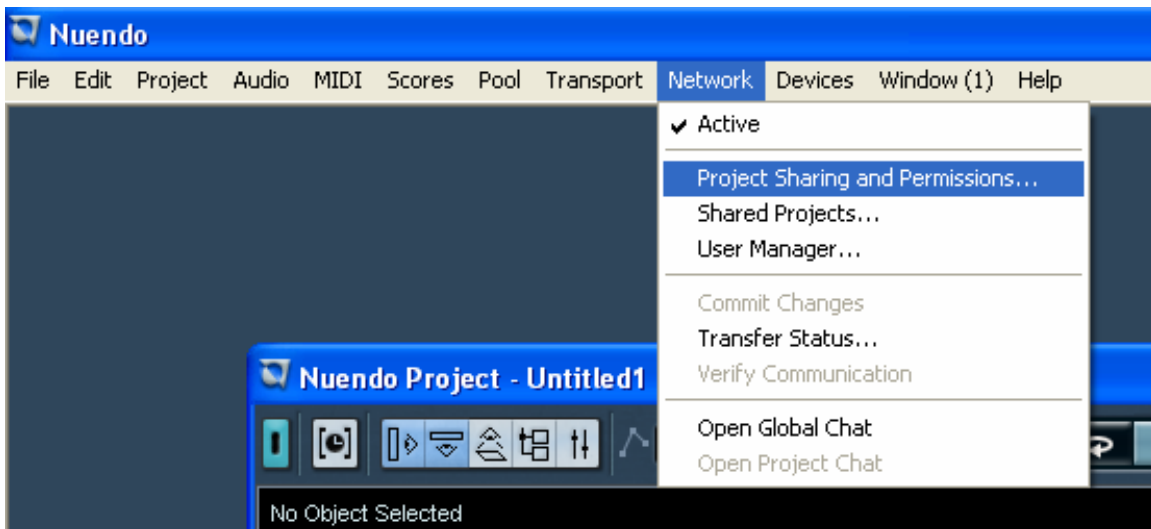


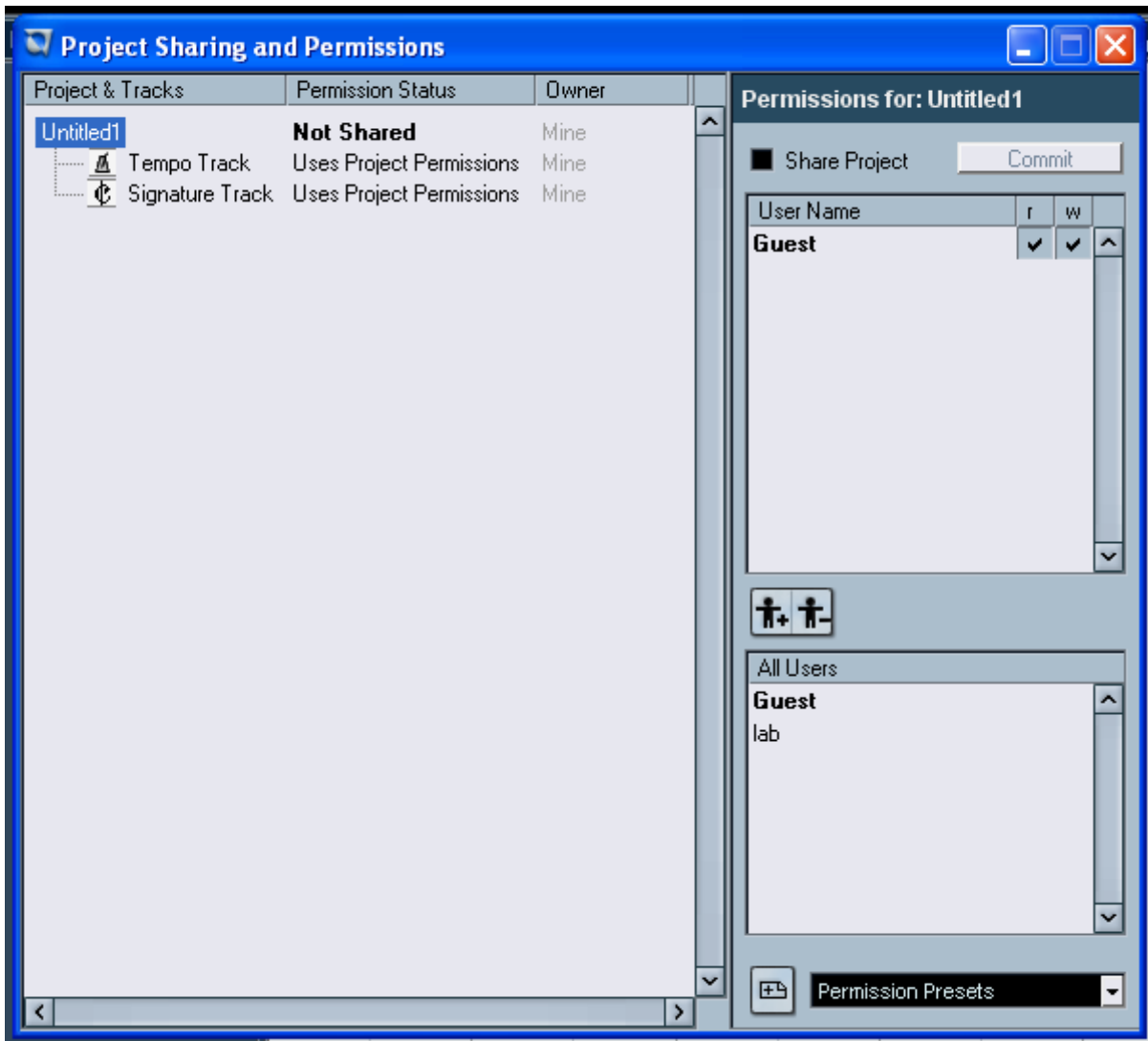
5. Click in the text box, type in a name of your choice and click “OK”.

- If a name you enter is already in use for another computer in the network, you will be prompted to select another name.

6. When you have entered a user name, load or create a project that you want to share with the other users. Have the other users follow the above steps to create their connection.

7. Open the “Project Sharing and Permissions” dialog from the Network menu and activate the “Share Project” option.





Our other user in our project is called "lab", as the creator of the project and the first one to connect you can click on lab and then select the plus key to add the user to the project.



Project Sharing and Permissions

| Project & Tracks | Permission Status | Owner |
|------------------|--------------------------|-------|
| Untitled1 | Shared | Mine |
| Tempo Track | Uses Project Permissions | Mine |
| Signature Track | Uses Project Permissions | Mine |

Permissions for: Untitled1

Share Project

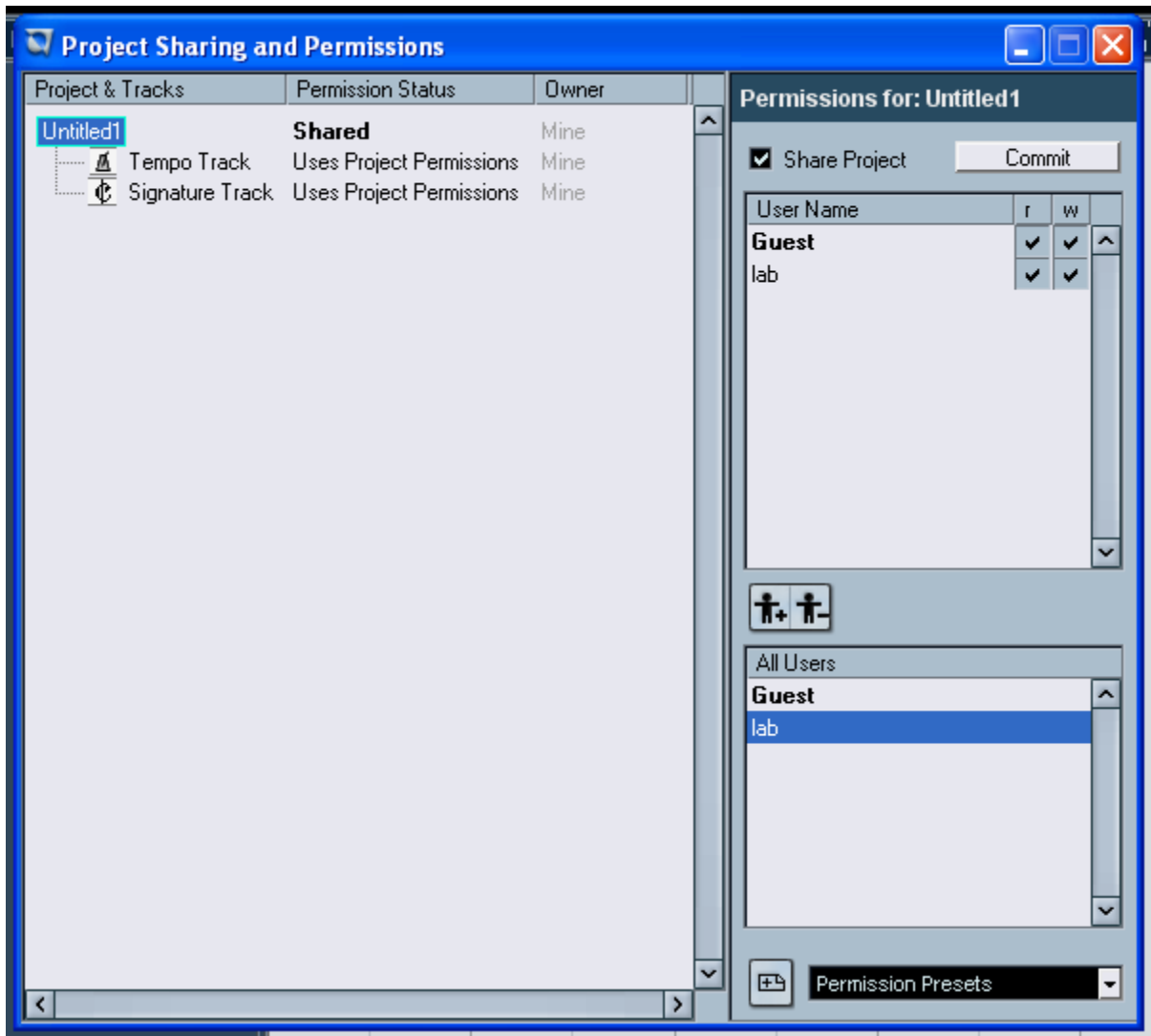
| User Name | r | w |
|-----------|---|---|
| Guest | ✓ | ✓ |

All Users

| |
|-------|
| Guest |
| lab |

Permission Presets



Now everyone can collaborate on the project, contribute new tracks, edit existing data and commit the changes to the other users. The above procedure is a short and sweet summary of the basic usage, but the Nuendo networking technology offers far more options. For instance, you can specify which users in a network should have access to a project, whether they should have complete access or only partial access, and much more.