

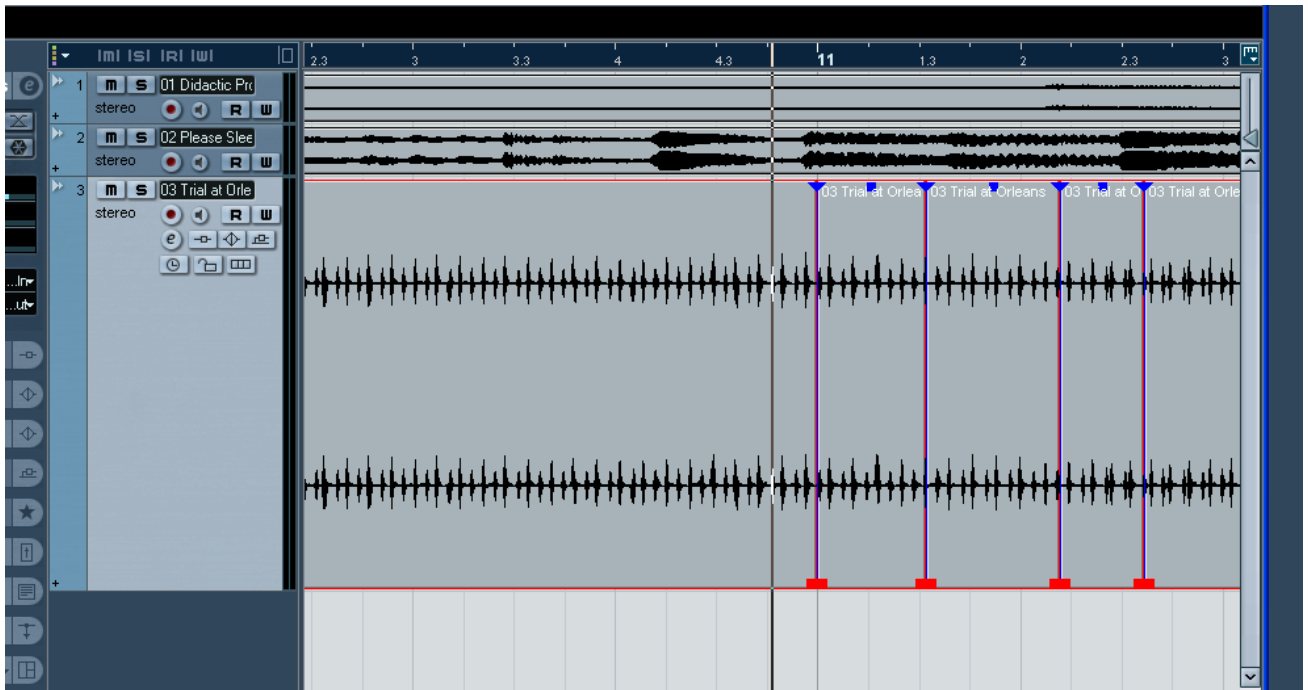
Nuendo - Applying Default Fades

Q: Can I automatically fade all my files in and out?

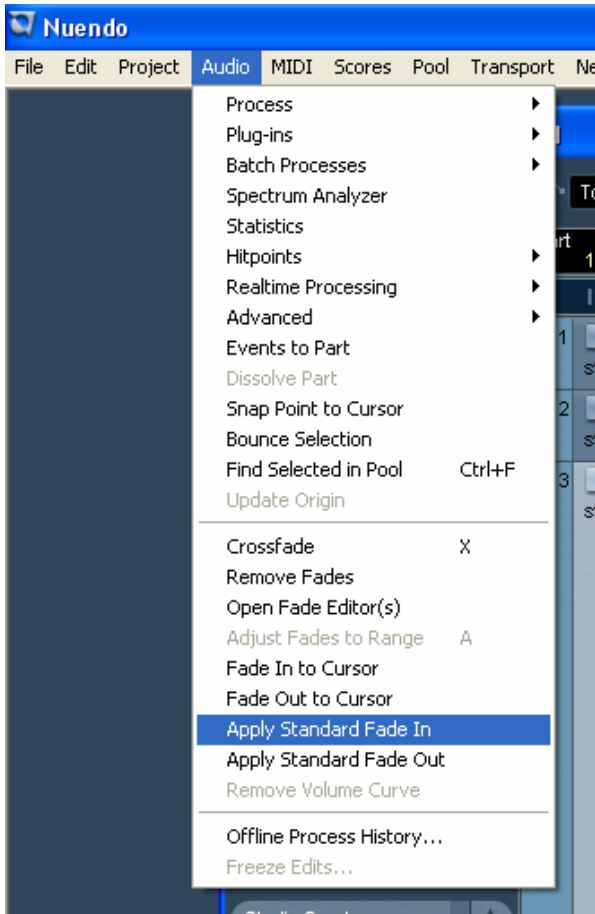
A: Yes, use the Default Fades.

Nuendo can execute fades of 1 ms at start or end of an event to facilitate faster work flow. You can create these auto fades by using the commands “Apply Standard Fade In” and “Apply Standard Fade Out” from the Audio menu.

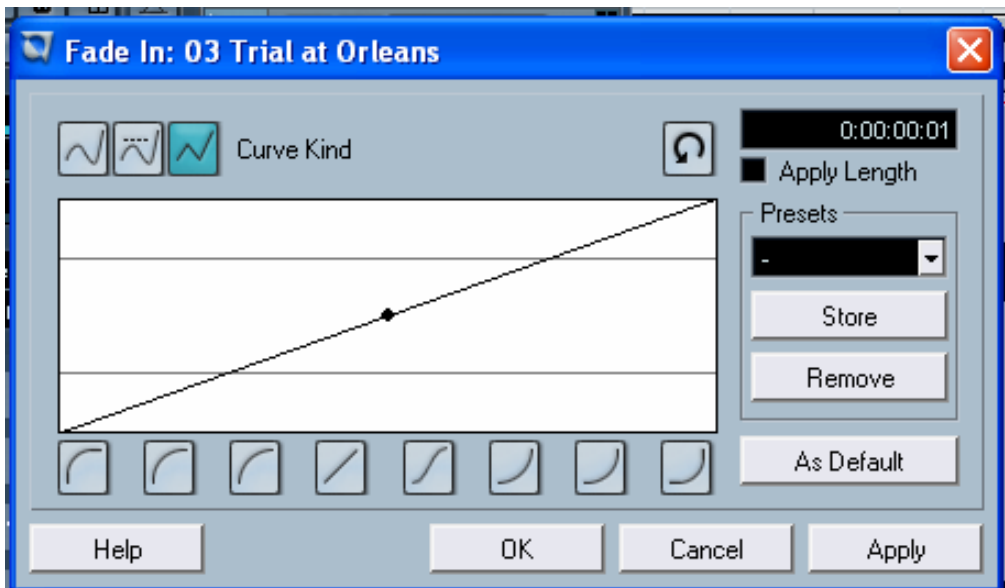
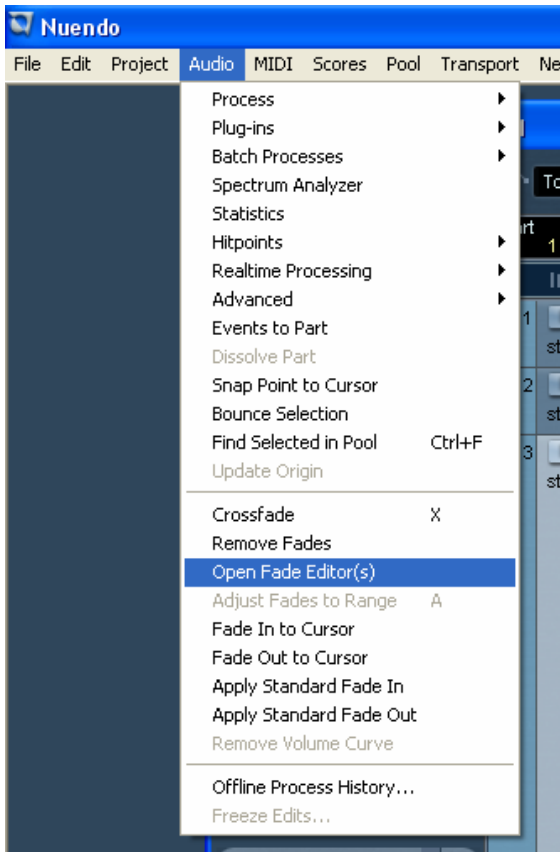
1. Select one or more audio events in the project window.



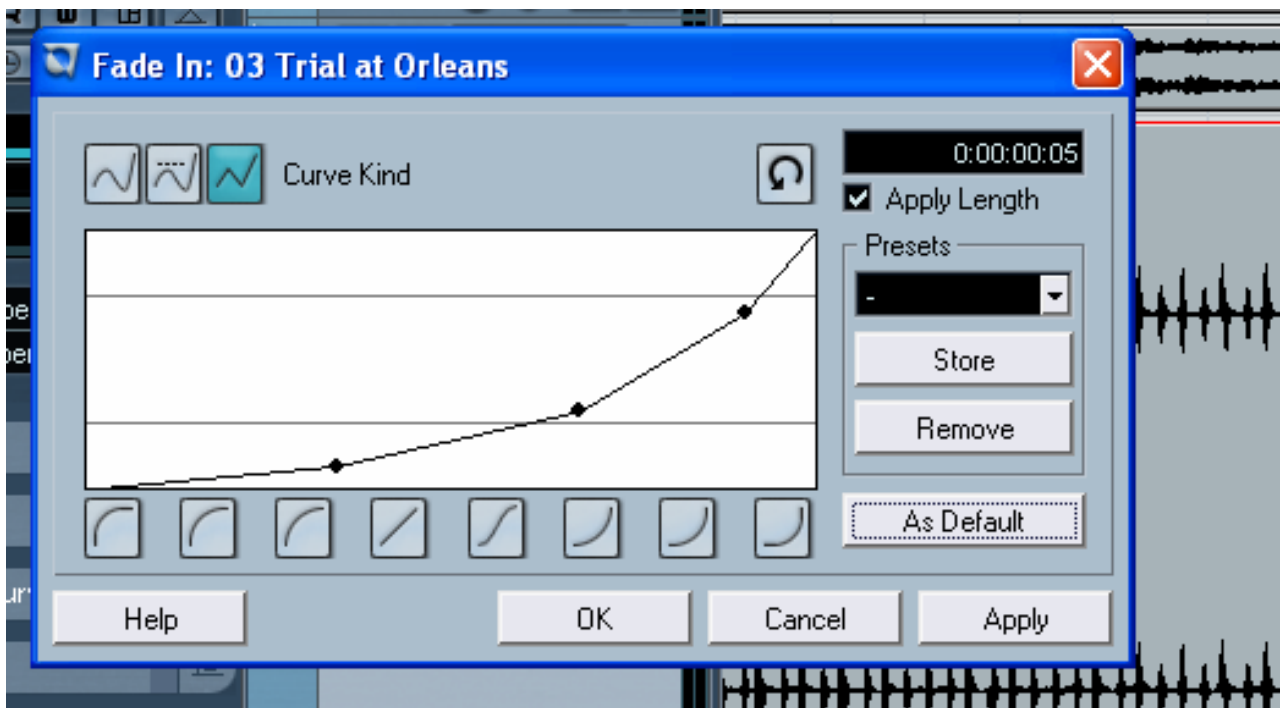
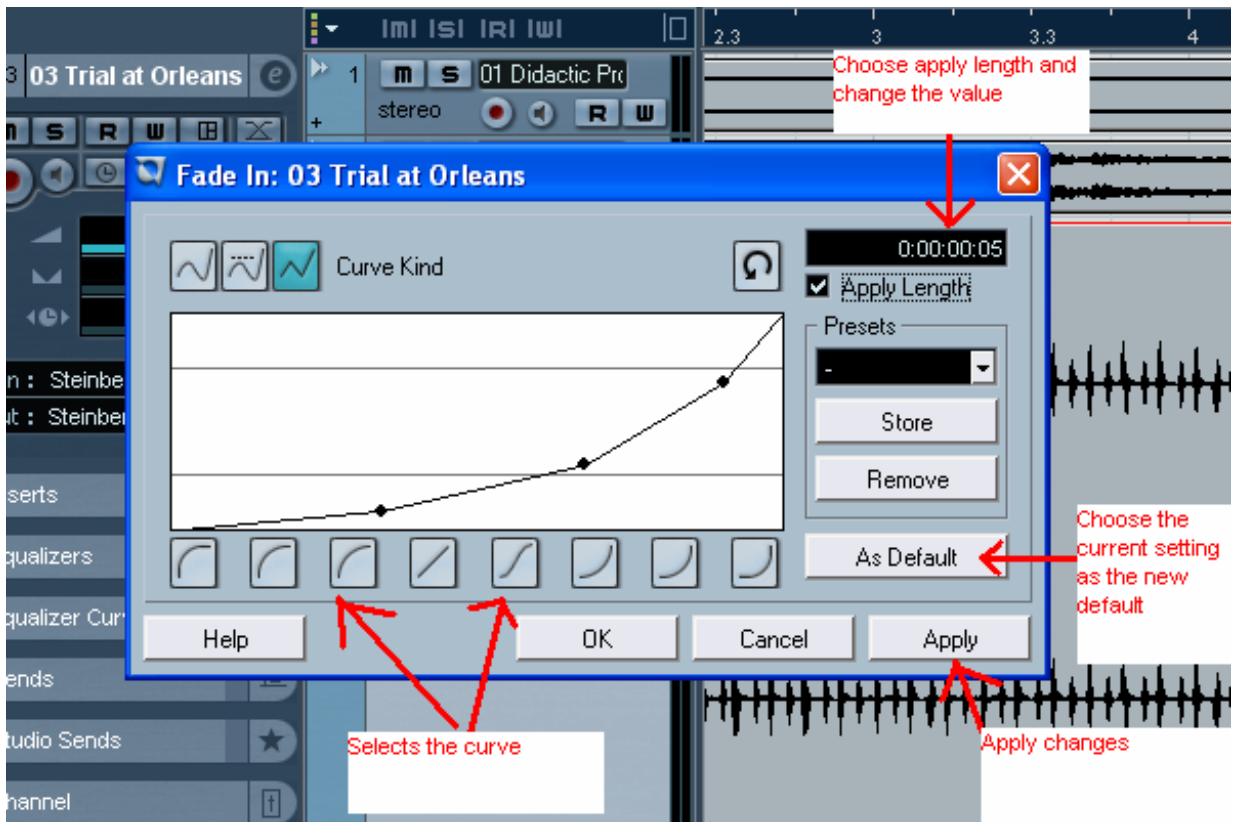
2. From the Audio menu, choose either “Apply Standard Fade In” or “Apply Standard Fade Out.”



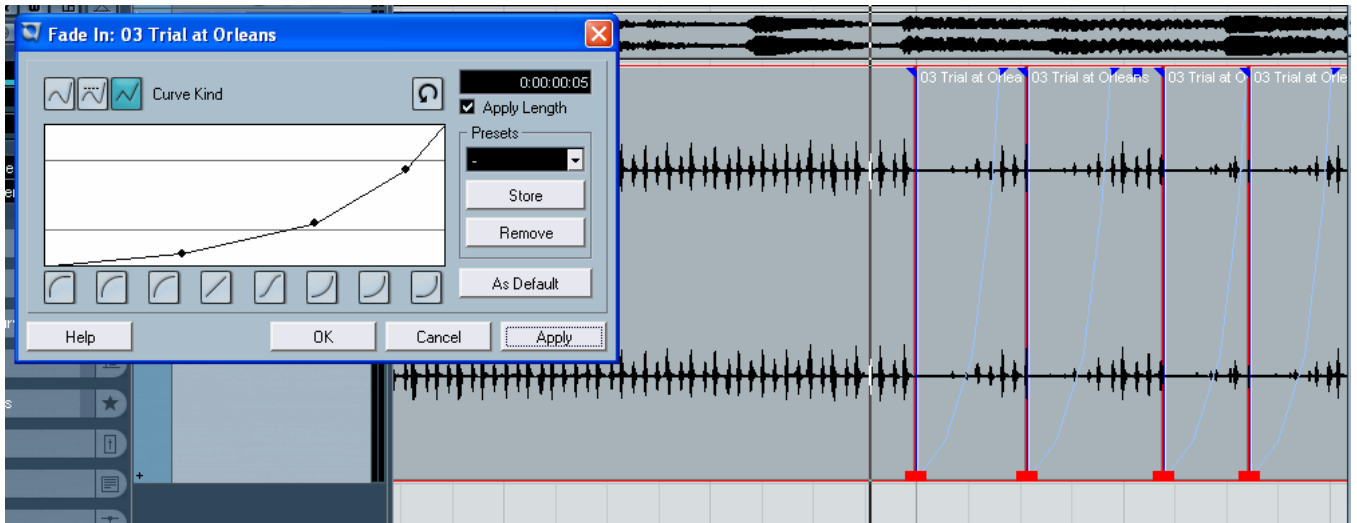
The fade that will be created is the same length and shape as the Default fade. To set the default fade length go to Audio Open Fade Editor(s).



In this window you can change the curve style and the length. To set the fade as the new default click “Set as Default.”



If you still have the events selected and wish to change them you can click Apply.



Or you can select specific events, and again use Audio “Apply Standard Fade In” to change them.

