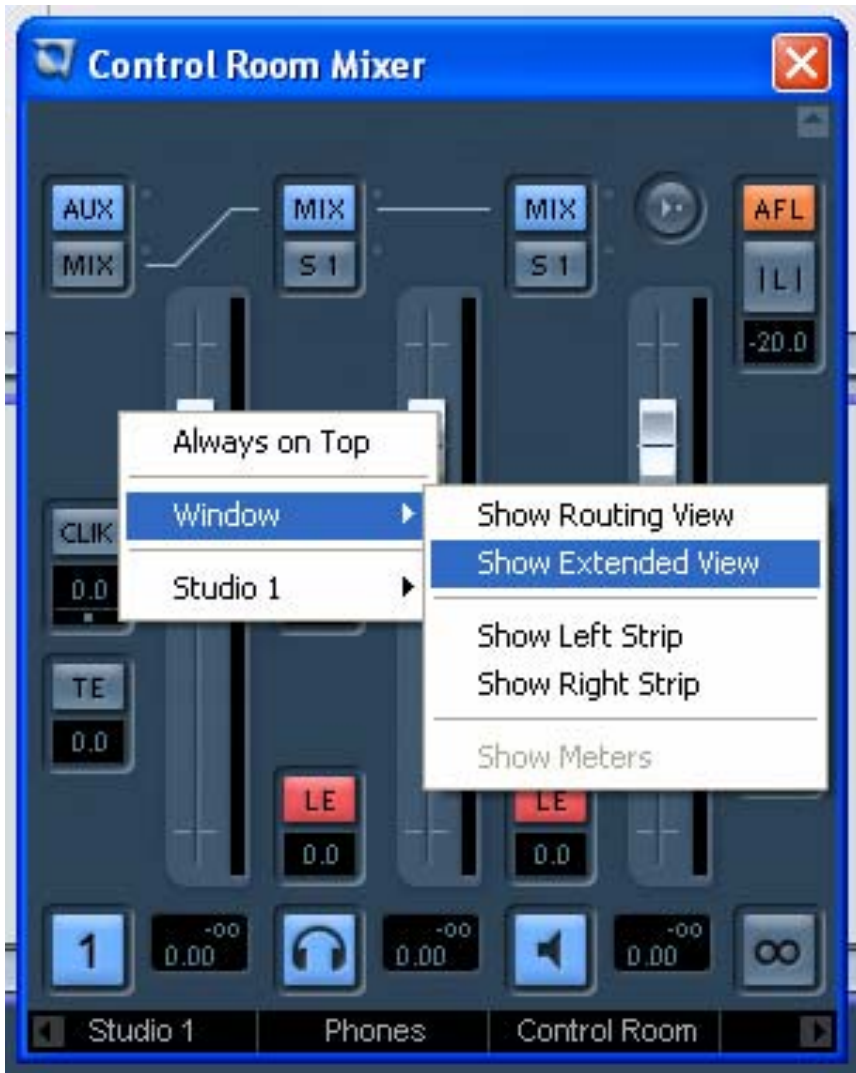


Nuendo - Configuring the Control Room Mixer

In order to display more controls in the Mixer, the small tabs found at the lower left and right corners can be clicked to open or close the extended speaker controls on the right (Right Strip) and the External Input and Talkback controls on the left (Left Strip). The tab found at the upper right corner of the Mixer extends the Mixer vertically to display meters and inserts (Extended View). A second vertical expansion tab appears above the inserts and meter display.



Extending the mixer using this tab exposes the Input Gain and Input Phase switch, channel configuration and name for each channel (Routing View). These tabs work in the same manner as the Project Mixer vertical expansion tabs.

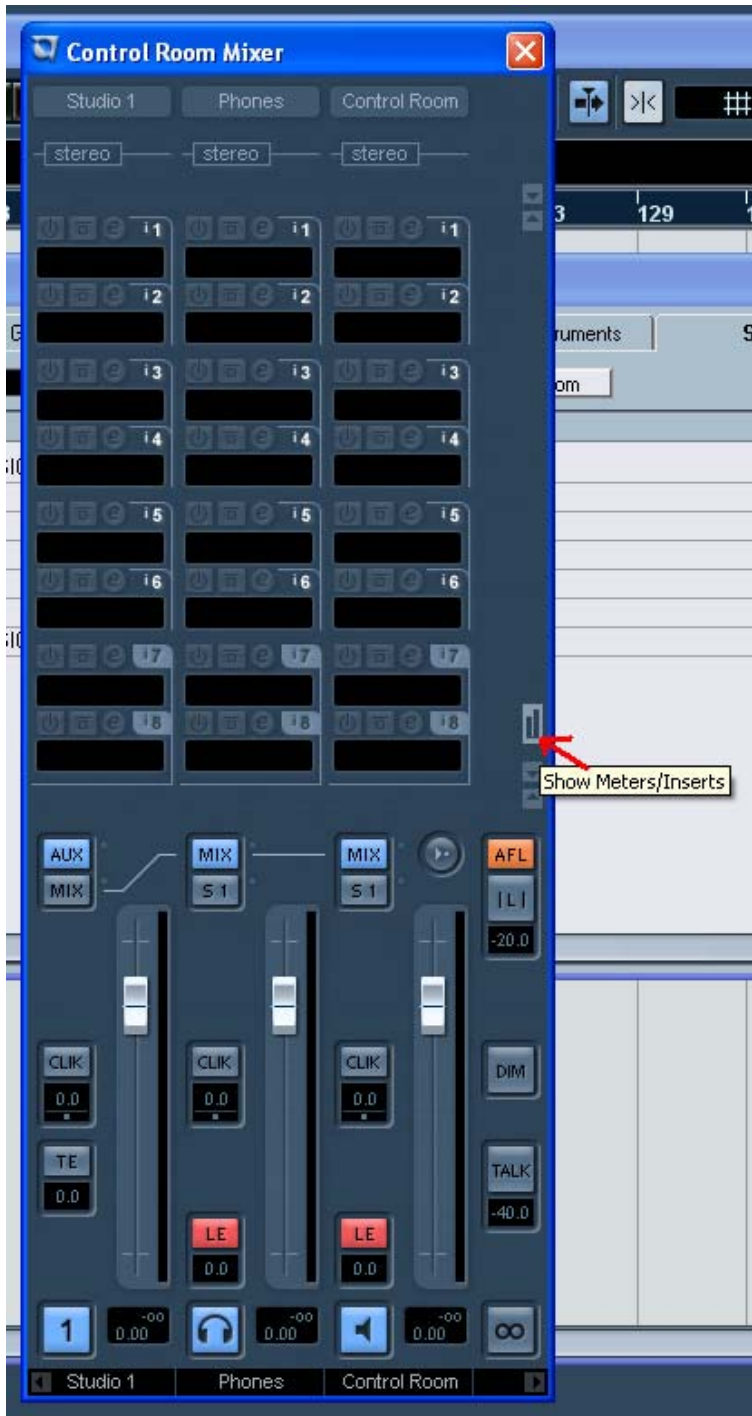


Right-clicking (Win) or [Ctrl]-clicking (Mac) anywhere on the Control Room Mixer brings up a contextual menu that allows you to resize the Mixer in the same way as the expansion tabs. Use the options in the Window sub-menu to show the Left and Right Strips along with the Extended and Routing Views.



Control Room Inserts and Meters

When the Control Room Mixer displays the Extended View, the meters become visible. These meters look and function the same way as the ones in the Project Mixer. Pressing the small meter icon at the center right side of the mixer will change the view to display inserts. Alternatively, uncheck the Show Meters option from the Mixer's contextual menu. Each Control Room Channel has a set of inserts configured as six pre-fader and two post-fader inserts. External Inputs and Monitor channels only have the six pre-fader inserts. The Control Room Mixer's Extended View displaying channel inserts.



If you do not wish to see full sized meters but still want some indication of signal activity, activate the option “Signal Presence Indicator” in the Preferences dialog (VST – Control Room page). They will be displayed next to the input selection buttons and will indicate signal presence for all inputs.

