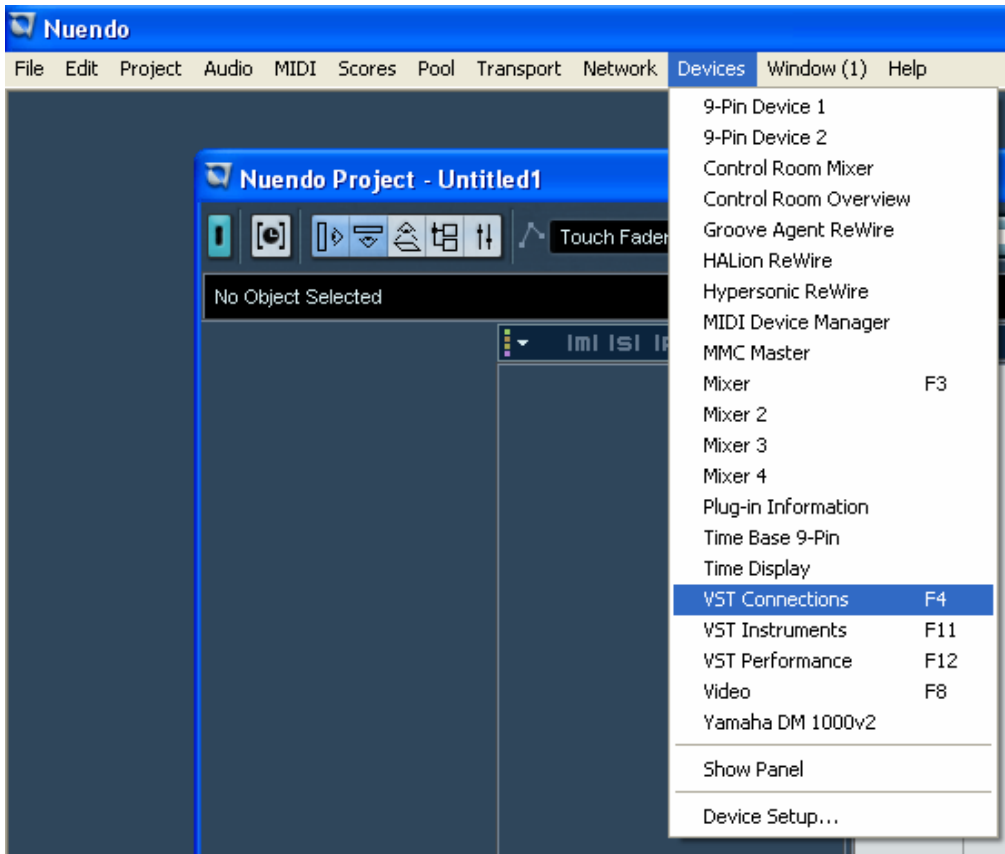
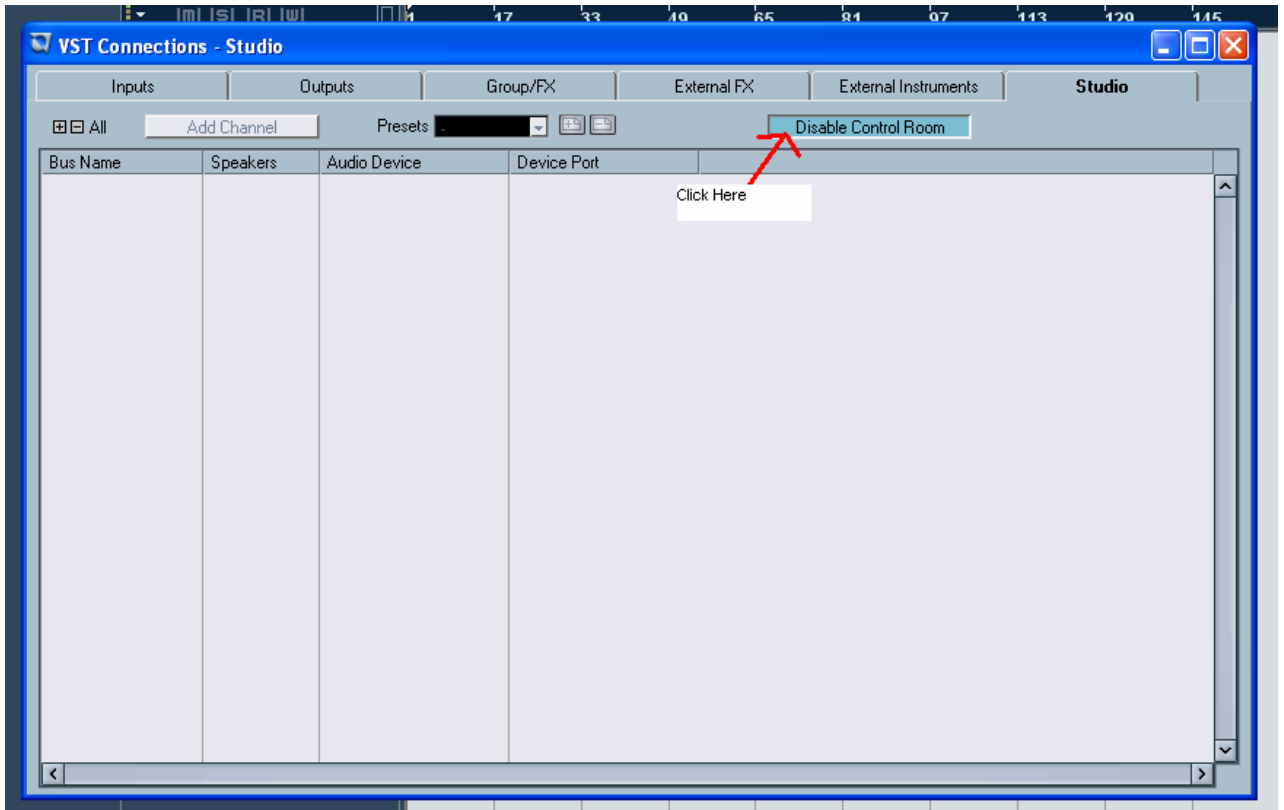


## Nuendo - Control Room Enable and Disable

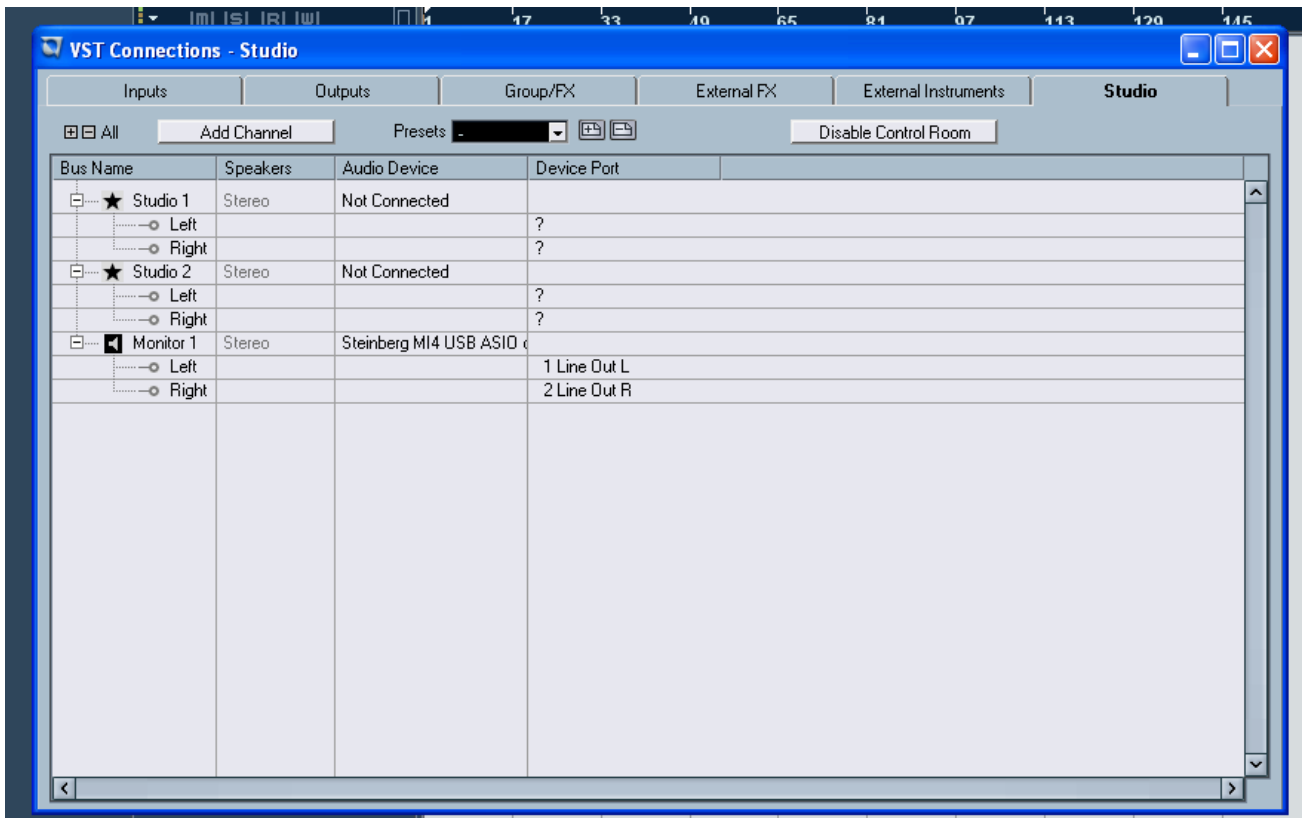
The concept behind creating the Control Room features was to divide the studio environment into the performing area (studio) and the engineer/producer area (control room) common to traditional studios. You can either choose to use the advantages of Control Room for signal routing, or you can disable them. Here is how:

Devices, VST Connections, Studio Tab



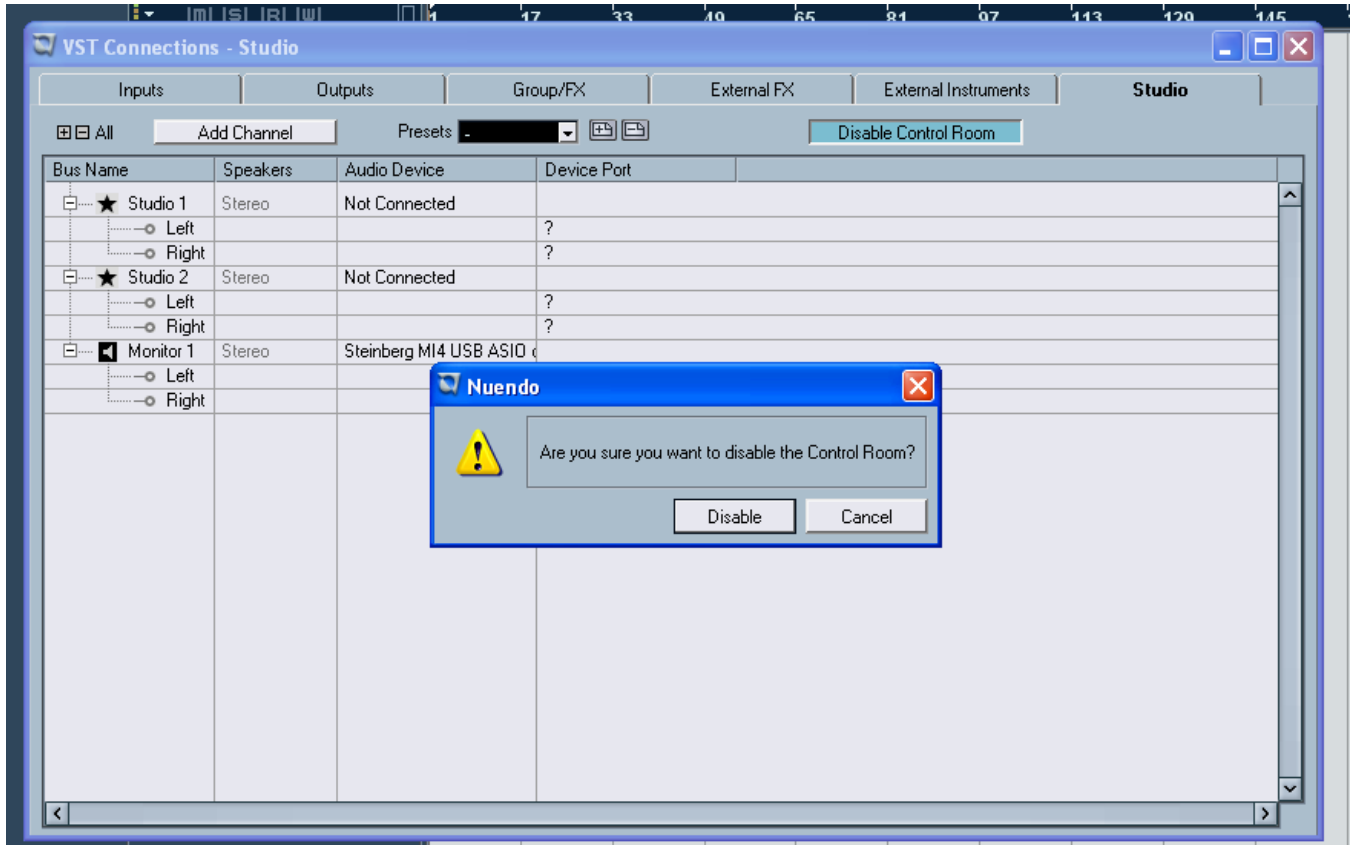


When you click on "Disable Control Room" you will enable it.



## Disabling the Control Room

If you need to use Nuendo without the Control Room functions, you may simply press the Disable Control Room button. Any channels you have created will be saved and reloaded when you enable the Control Room again.



Click Disable and control room will be disabled again.