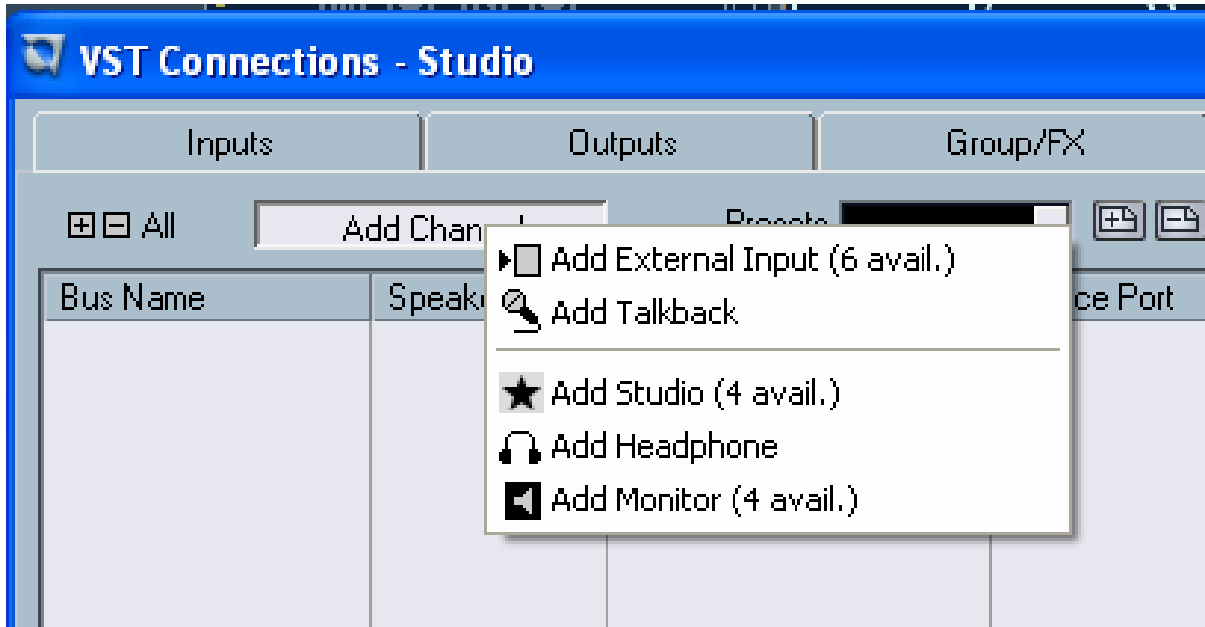
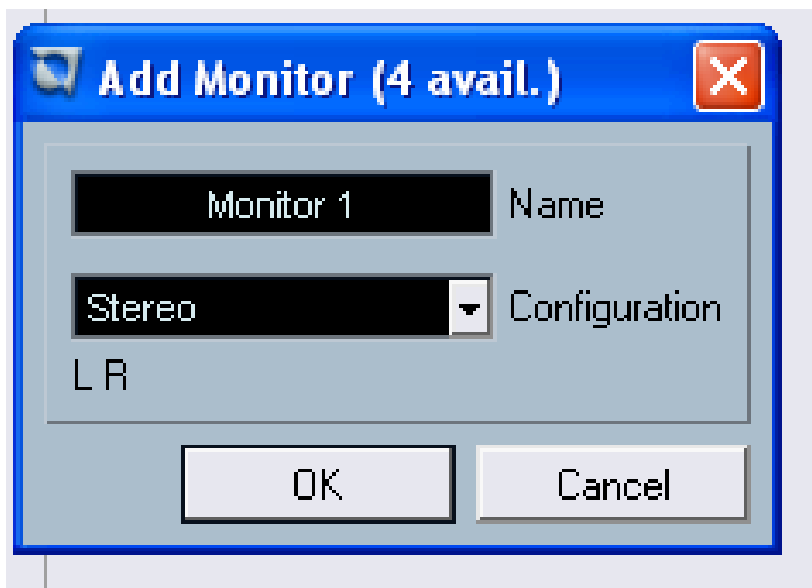


## Nuendo - Creating a Control Room Channel

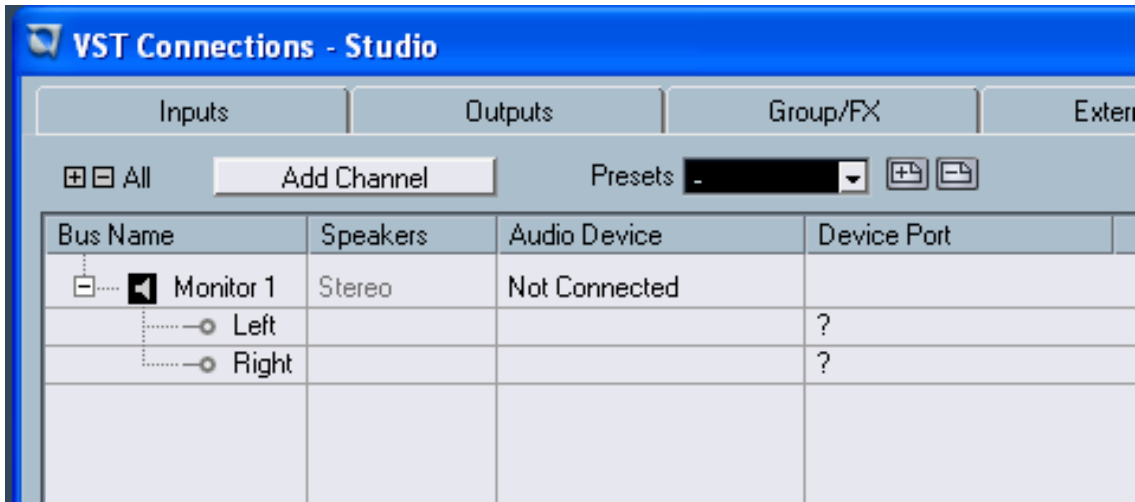
To create a new channel, click on the Add channel button in the Studio Tab of the VST Connections window.



All available channels will be listed along with how many of each type are available. Select the type of channel you wish to create and a dialog will appear allowing you to choose the configuration of the channel (stereo, 5.1, etc.). If you are adding the Talkback or Phones channels, there are no channel configuration choices since the Talkback is mono only and the Phones are stereo only.



After clicking OK, the new channel will appear in the VST Connections window. You can now connect it to any available Device Port using the “+” buttons.



An Audio Device must be selected and then a Device Port must be chosen for each audio path. You assign Device Ports to channels in the same fashion as assigning any VST Connection.

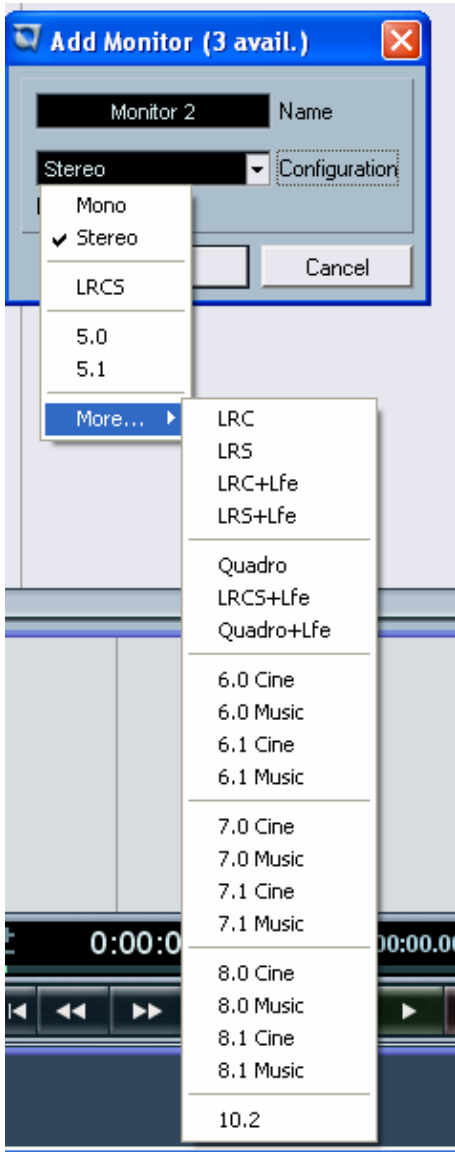


Control Room channels can share Device Ports with each other. This can be helpful if you use the same speakers as a stereo pair and also as the left and right channels of a surround speaker configuration. Switching between monitors that share Device Ports will be seamless, providing any downmix of multi-channel audio to stereo if needed. Only one Monitor set can be active at a time.

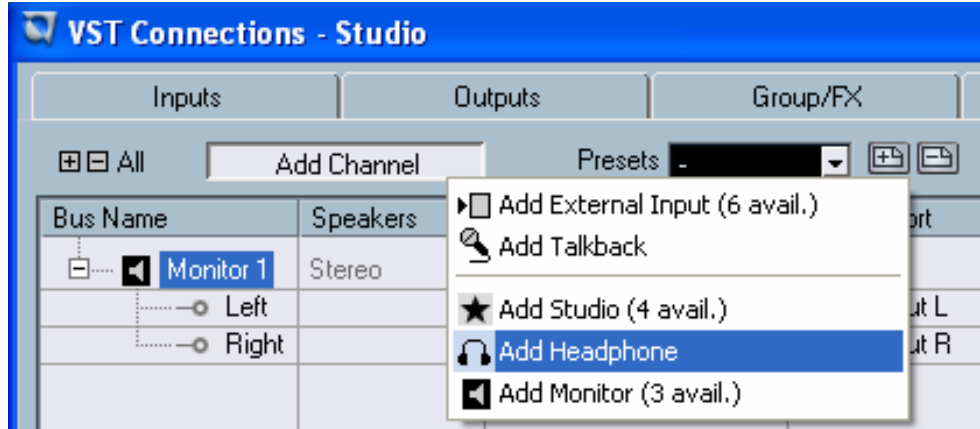
### Monitors

Create a Monitor channel for every set of speakers in your studio. A typical post-production studio could have one set of 5.1 surround speakers, another stereo set of speakers and even a single, mono speaker for checking balances for mono broadcast. The

Control Room Mixer will allow you to switch speakers easily. Each set of Monitors can have its own custom downmix settings, Input Gain and Input Phase adjustments.

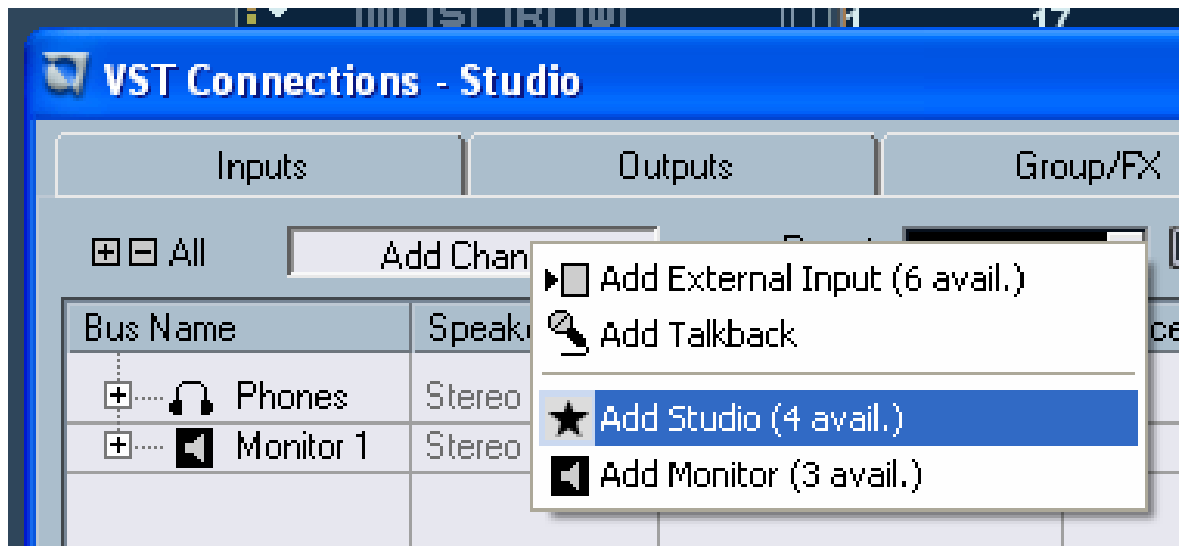


## Phones



Create a Phones channel if you intend to listen to headphones in the control room. The Phones channel is not intended for use by performers in the studio. It is designed for the engineer to quickly listen to any source in the studio, including the four cue mixes, as a reference. The Phones channel is stereo only.

## Studios

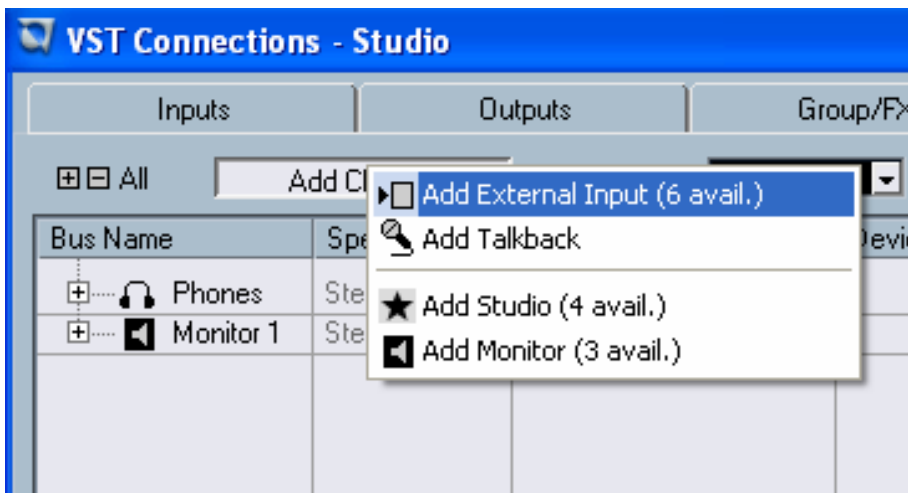


Create a Studio channel for each cue mix you wish to create for performers in the studio. There are four available Studio channels. For example, if you have two available headphone amplifiers for performers to use, create two Studio channels, one for each headphone mix.

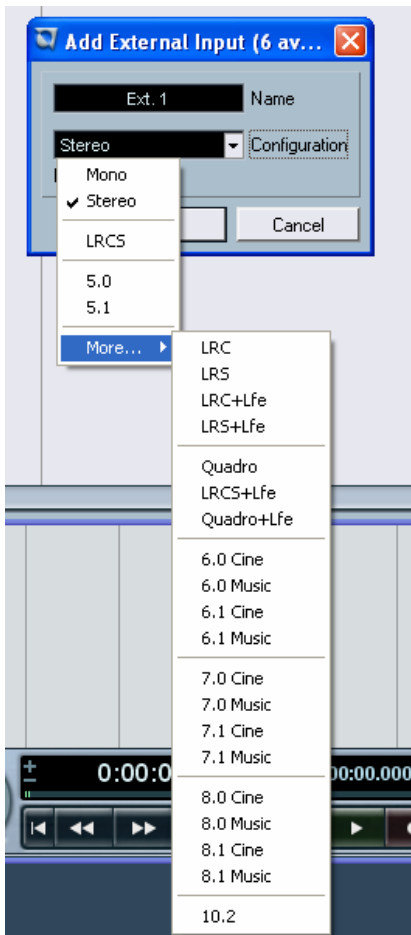
Studio channels can either be mono or stereo.



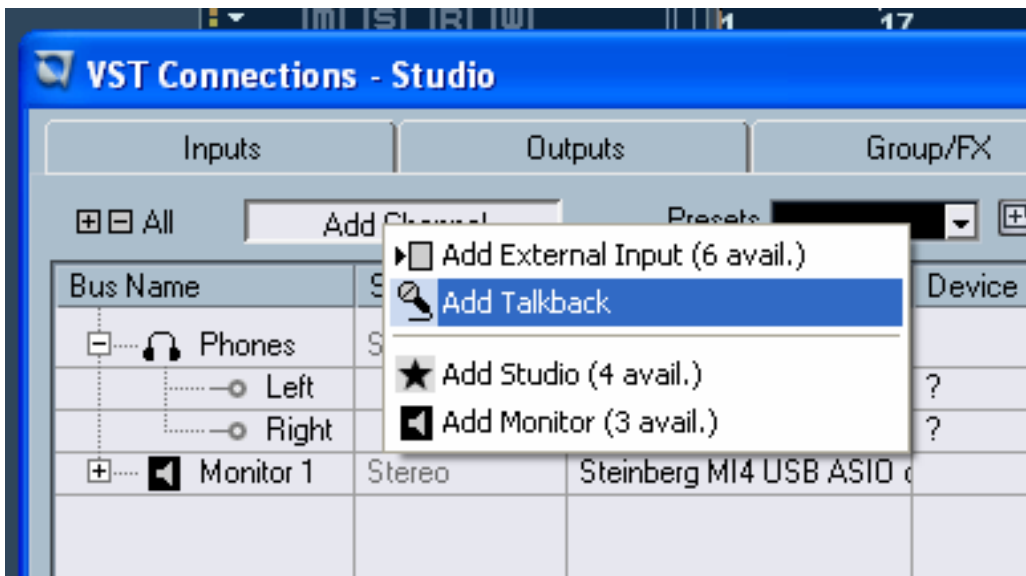
### External Inputs



Create External Input channels for every playback device you wish to be able to monitor in the control room. There are six available External Inputs with channel configurations from mono up to 10.2 surround. Use External Inputs to quickly listen to CD players, master recorders, or other workstations. External Inputs can share Device Ports with VST Inputs, allowing you to also record from those sources directly into Nuendo.



## Talkback



Create a Talkback channel if you have a microphone in the control room available for communication with performers in the studio. The Talkback can be routed to each Studio

channel with variable levels in order to optimize communications between the control room and performers. Additionally, the Talkback is available as a possible input source for Audio tracks. You can record from the Talkback just like any other VST Input. Inserts are available on the Talkback and all other Control Room channels. A compressor/limiter can be inserted on the Talkback channel to ensure that erratic levels do not bother performers and clear communication with everyone is possible.

