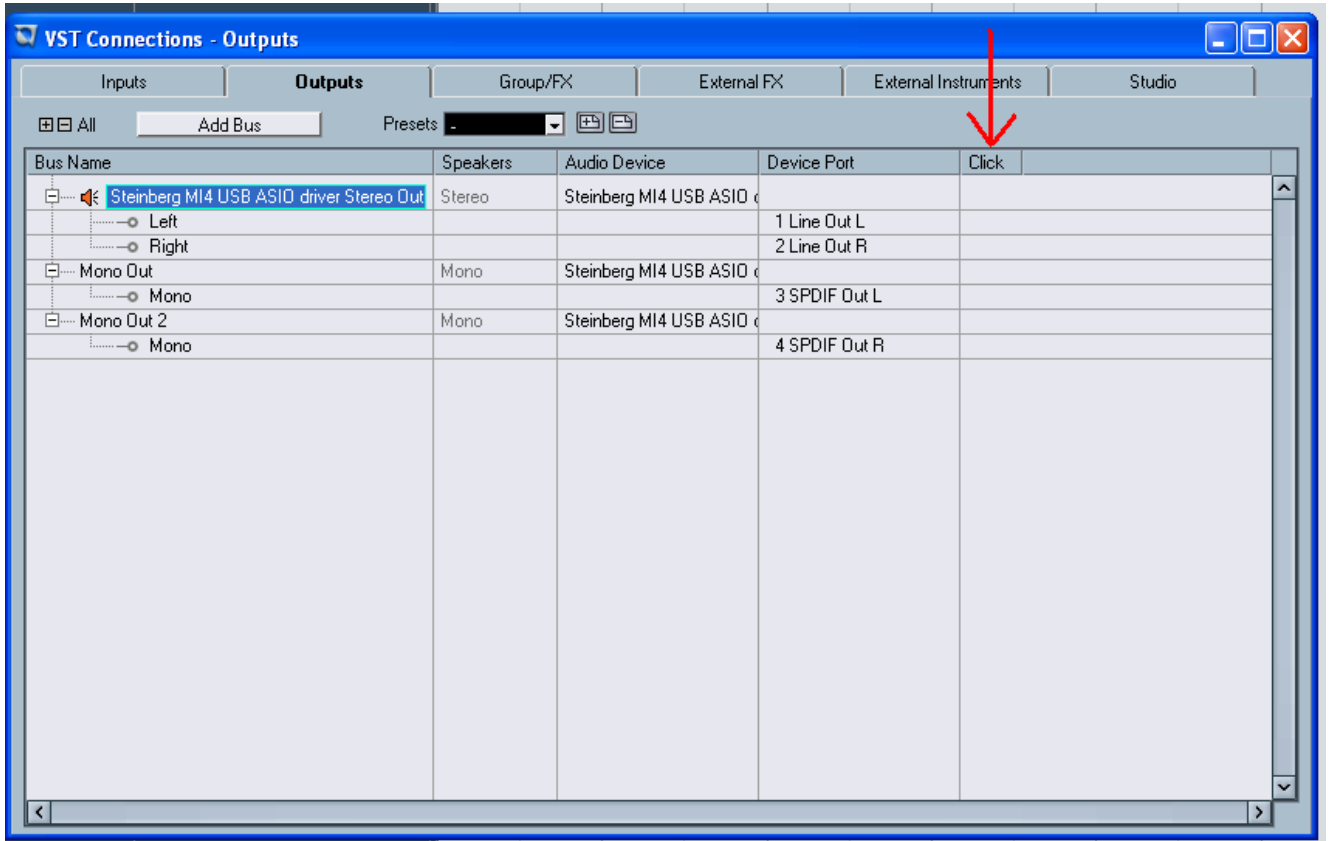


## Nuendo - Click Bus

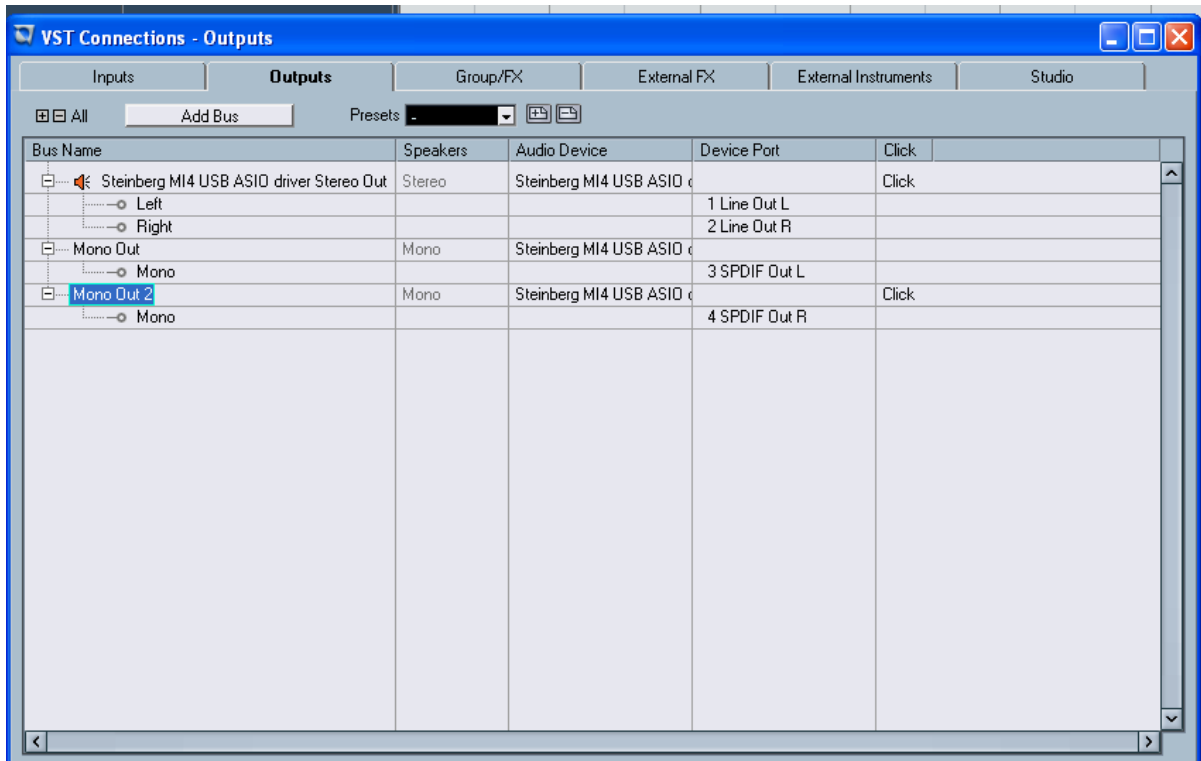
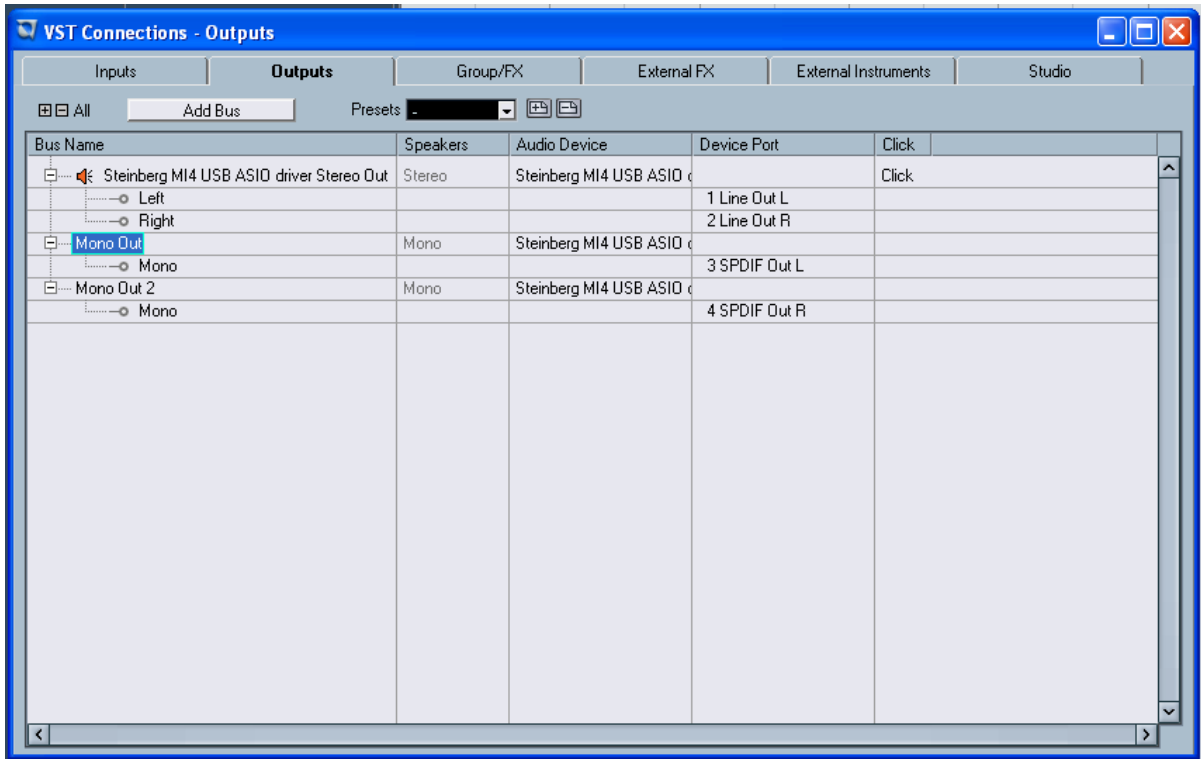
Q: How do I send the click to multiple outputs?

A: Use the Click Bus.

In Nuendo 3.2 the audio click from metronome setup is sent on the Click Bus. Each output in VST Connections can have the click added to it. Go to Devices, VST Connections, Outputs Tab.



Click in the row across from the bus name to add the audio click to the output.



If you click on the row with Left, Right, Mono, Center, etc, you will find that you cannot add the click to a single output of a bus. You must add the click to the entire bus name.

VST Connections - Outputs

Inputs    **Outputs**    Group/FX    External FX    External Instruments    Studio

All    Add Bus    Presets [ ]    [ ] [ ]

Bus Name	Speakers	Audio Device	Device Port	Click
Steinberg MI4 USB ASIO driver Stereo Out	Stereo	Steinberg MI4 USB ASIO d		Click
Left			1 Line Out L	
Right			2 Line Out R	
Mono Out	Mono	Steinberg MI4 USB ASIO d		
Mono			3 SPDIF Out L	
Mono Out 2	Mono	Stein		Click
Mono			4 SPDIF Out R	

Click Here to add Click

Do not click. It will add nothing.