

How do I Load a Bank in HALion SE?

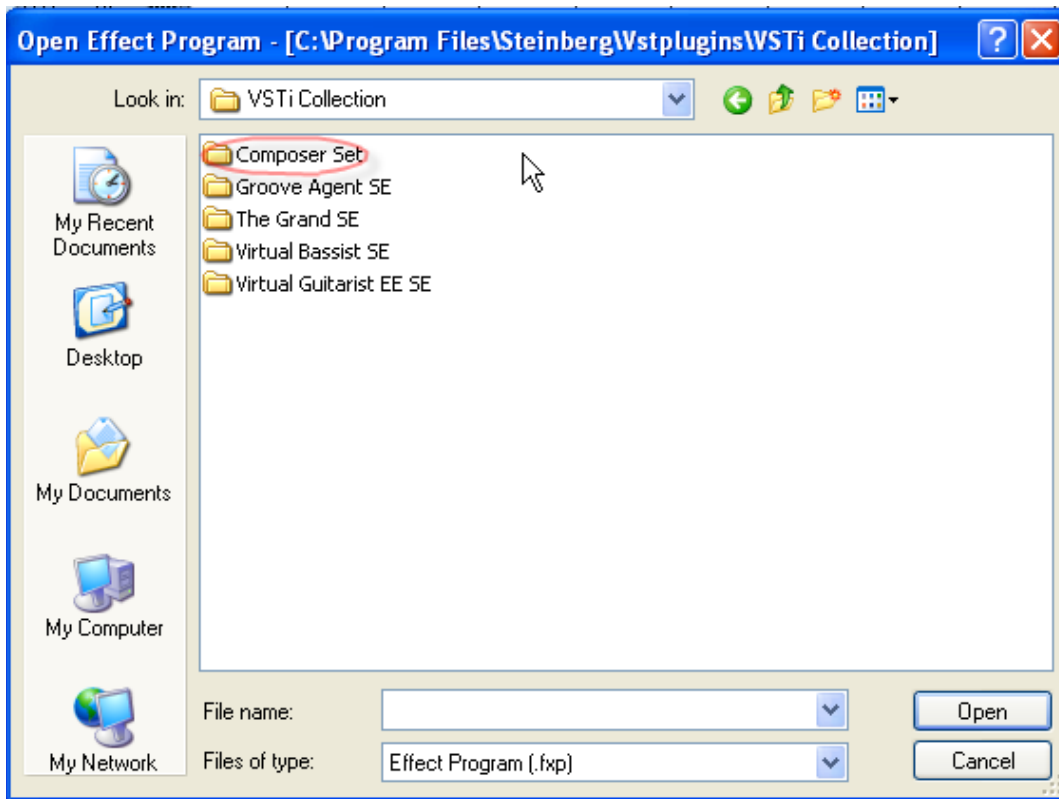
To load a bank into HALion SE, follow these steps:

1. In HALion SE, click on the little floppy disk icon at the top of the HALion SE window and select Load Instrument. (Fig. 1)



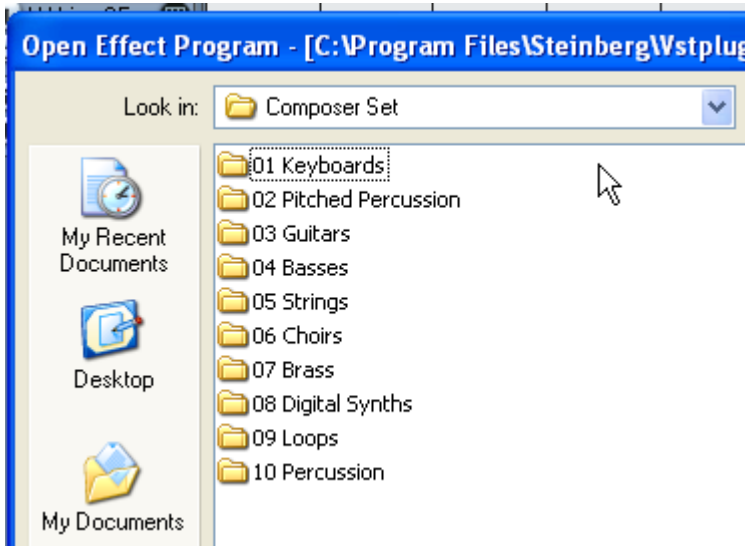
(Fig. 1)

2. In the Browser window, go to: Program Files – Steinberg – VST Plugins – VSTi Collection. In the VSTi Collection folder, you will notice the Composer Set folder. (Fig. 2). All the HALion SE content is located in this folder.



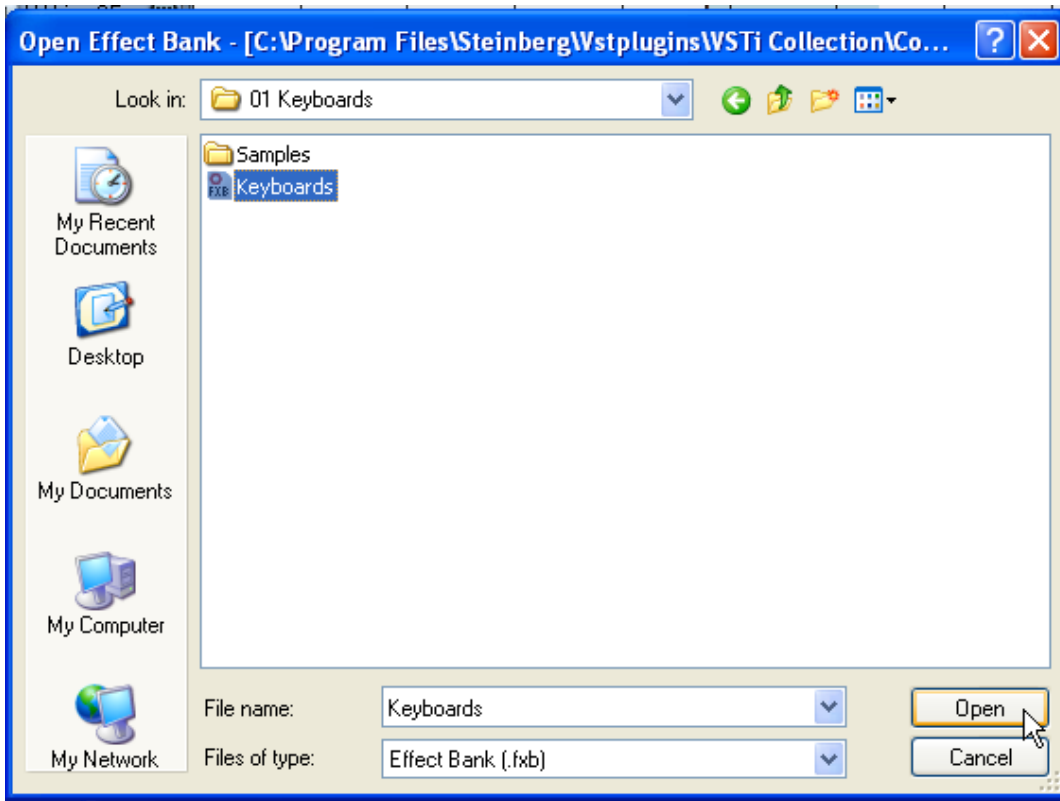
(Fig. 2)

3. Once you are in the Composer Set folder, you will see instrument folders. (Fig. 3)



(Fig. 3)

4. Open one of the instrument folders, select the bank you want to load and select the Open button. (Fig. 4) In HALion SE only the first four instruments of the bank will be loaded.



(Fig. 4)