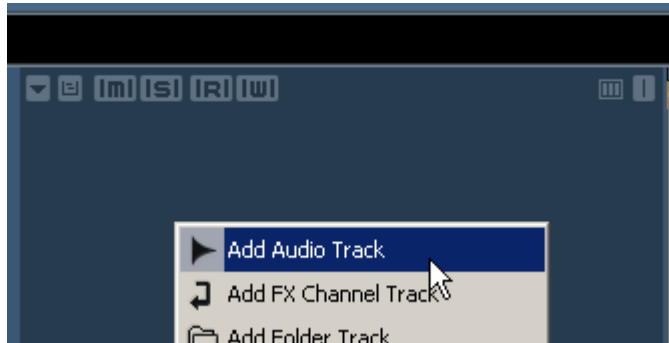


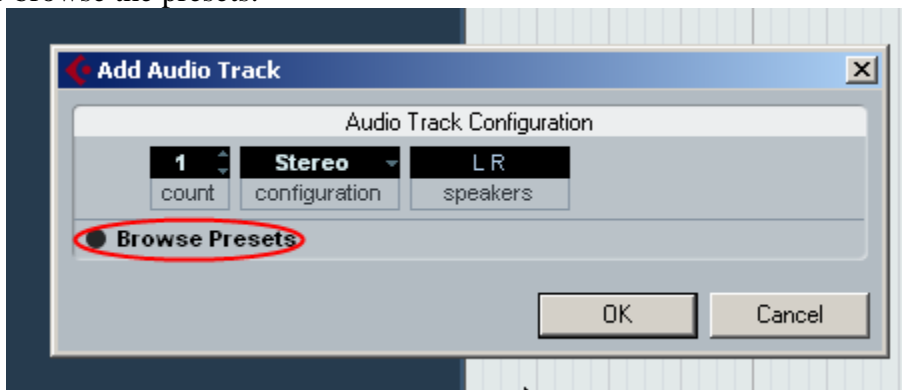
Cubase 4 - Loading Audio Track Presets

In Cubase 4 you can create and load track presets. This is a preset configuration of the track including such items as insert effects, EQ settings, volume, panning, and offset. Whenever you add an audio track you can choose to add a blank audio track or one of the track presets. The following will give an overview of the track preset feature for audio tracks.

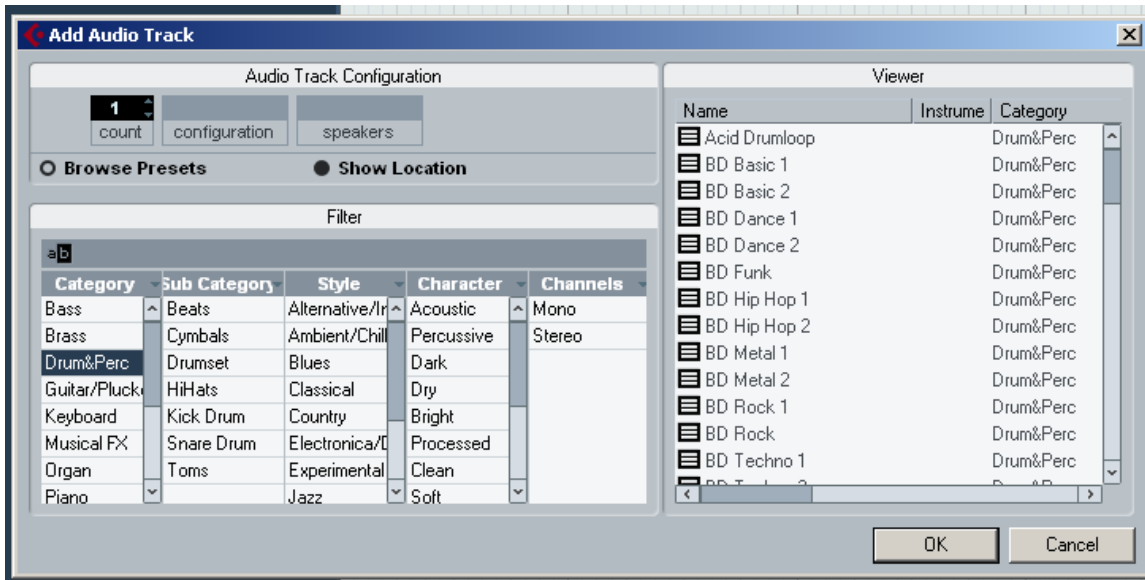
1. Add an audio track to the project by right-clicking in the track column and selecting audio track.



2. Once you have selected to add an audio track you will get a dialog that will allow you to choose how many audio tracks you want to create, what channel configuration, and what outputs. There is also a button labeled Browse Presets. Click on this button if you want to browse the presets.



3. Once you have clicked on the Browse Presets button the dialog will expand showing you all the presets available for audio tracks. There are 5 columns that will list attributes to aid in the filtering of the track presets. These attributes can be changed by clicking on the drop down menu at the top of the column.



4. The Viewer window will show the track presets and is also where you will make your selection and click the OK button. After making a selection and clicking the Ok button, the track will be added to your project with the configuration it was saved as.

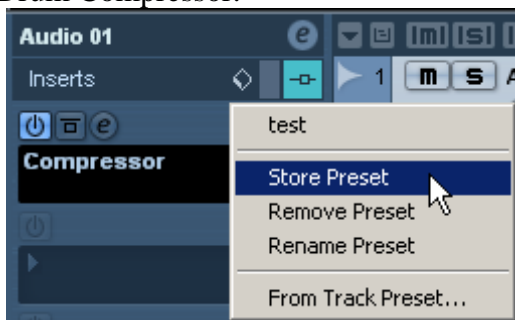
EQ and Insert Track Presets:

Track Presets can be stored or loaded for individual parts of an audio track as well. You can choose to store or load settings for Inserts and EQ's. This is done by the Preset Management button located by the Inserts and EQ's in the Inspector.

1. To open the Preset Management dialog click on the Preset Management button.



2. For this example a Compressor is loaded into insert slot 1 and stored as a track preset called Drum Compressor.





3. Once the Preset is named and the OK button is clicked the Insert preset is stored and can be recalled at a later time. The same would be true if there were a couple more insert effects loaded at the time the preset was stored; they would be recalled as well.

4. This exact same procedure can be done for EQ's. The steps are exactly the same except the settings will need to be made on the EQ and you will click the Preset Management button located beside the EQ box in the Inspector.

