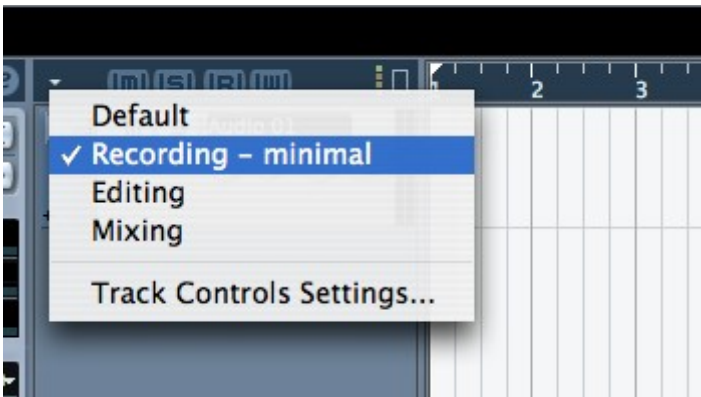


## Cubase – Track Control Settings

What is Track Control?

Track Controls are the visible tools on a given track, such as the record enable or monitor button on an audio/midi track. Track Control Settings allows you to modify the visible tools on a track type (audio/midi/video, etc).

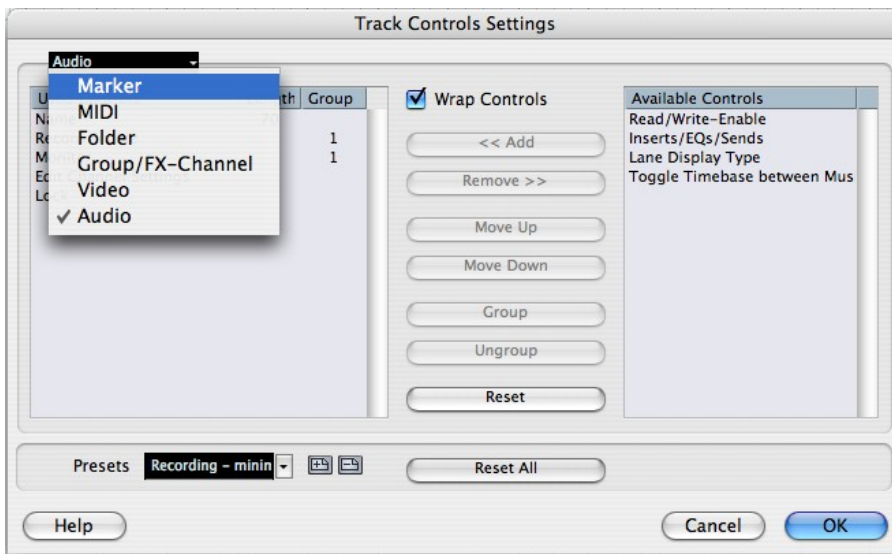


The track control menu is located above the audio/midi/etc tracks. It is the small arrow pointing down as shown in the pictures above. In the drop down menu are your track control presets. At the bottom of the menu is the Track Control Settings. This will bring up the Track Control Settings window where you can configure existing presets or create your own.

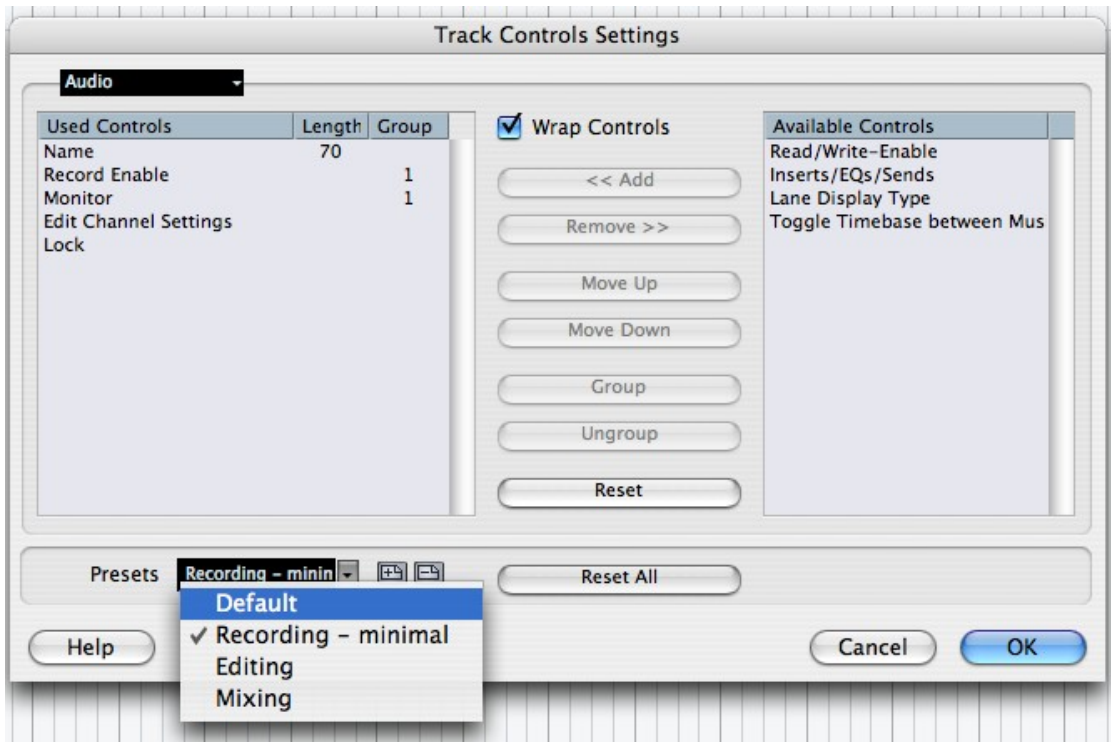


The items in the Used Controls list are the controls currently shown in the Track list for the selected track type.

The items in the Available Controls list (if any) are controls currently hidden in the Track list for the selected track type.



The settings made in the Track Controls Settings dialog apply to the selected track type (Audio, MIDI, Group/FX Channel, Folder, Video). If you right-click (Win) or [Ctrl]-clicked (Mac) an audio track to open the dialog for example, the settings for audio tracks are automatically displayed. The selected track type is shown in the menu display in the top left corner of the dialog.



## USING PRESETS

1. Click on the Save icon beside the Presets name field.  
A dialog appears allowing you to type in a name for the preset.
2. Click OK to save the settings as a preset.  
Saved presets are available for selection from the Presets pop-up and from the pop-up at the top left corner of the Track list.
3. To remove a preset, select it in the Track Controls Settings dialog, and click the Delete icon beside the Presets name field.