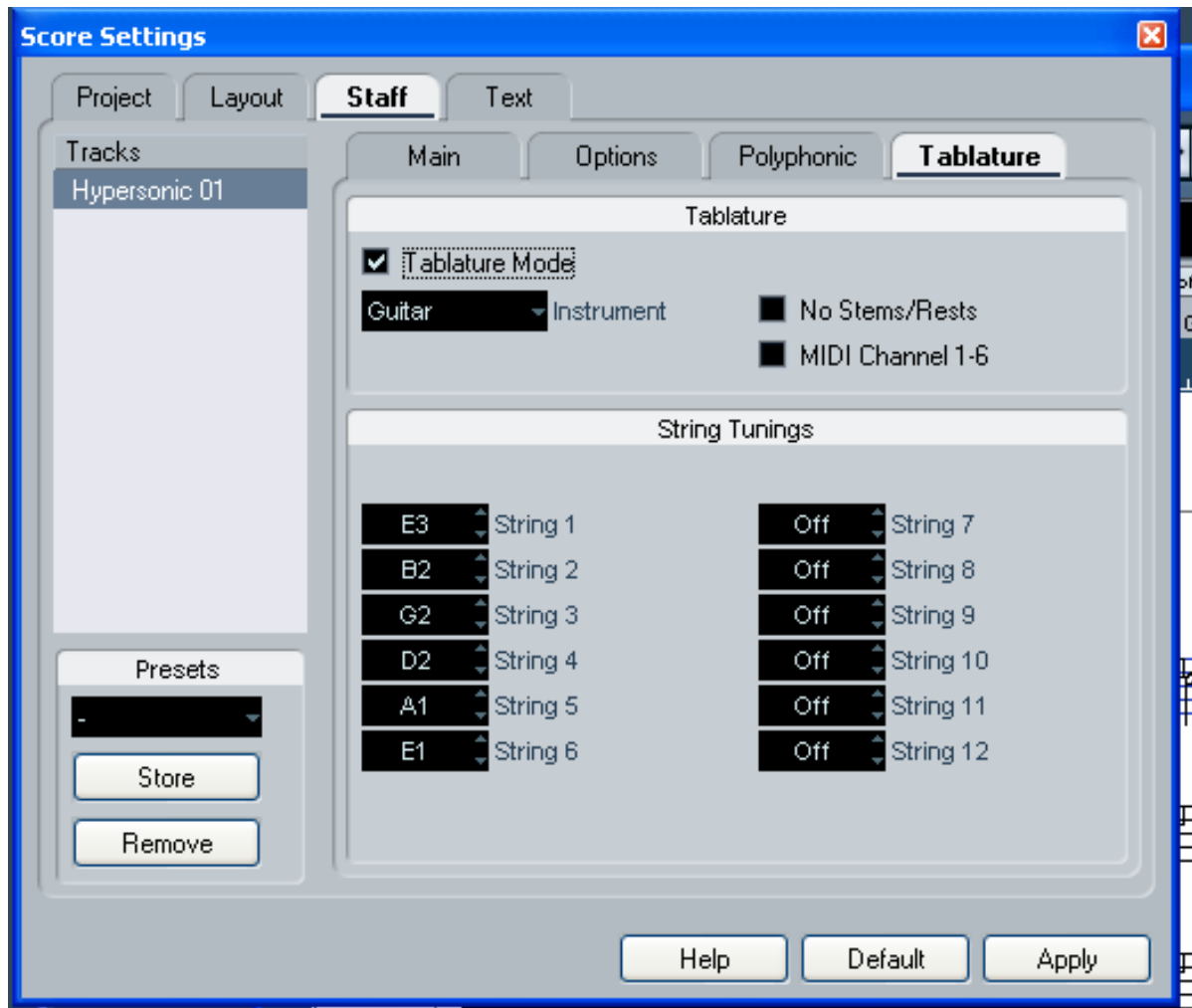


## Cubase 4 - Using Tablature in Score

Q: How do I use score to do tab for guitar or bass? How do I move a note to a different string?

1. Open your Score Settings, Staff, and go to Tablature. In Tab mode, you can have up to 12 strings turned on (though most of us will use either 6 for Guitar or 4 for Bass).



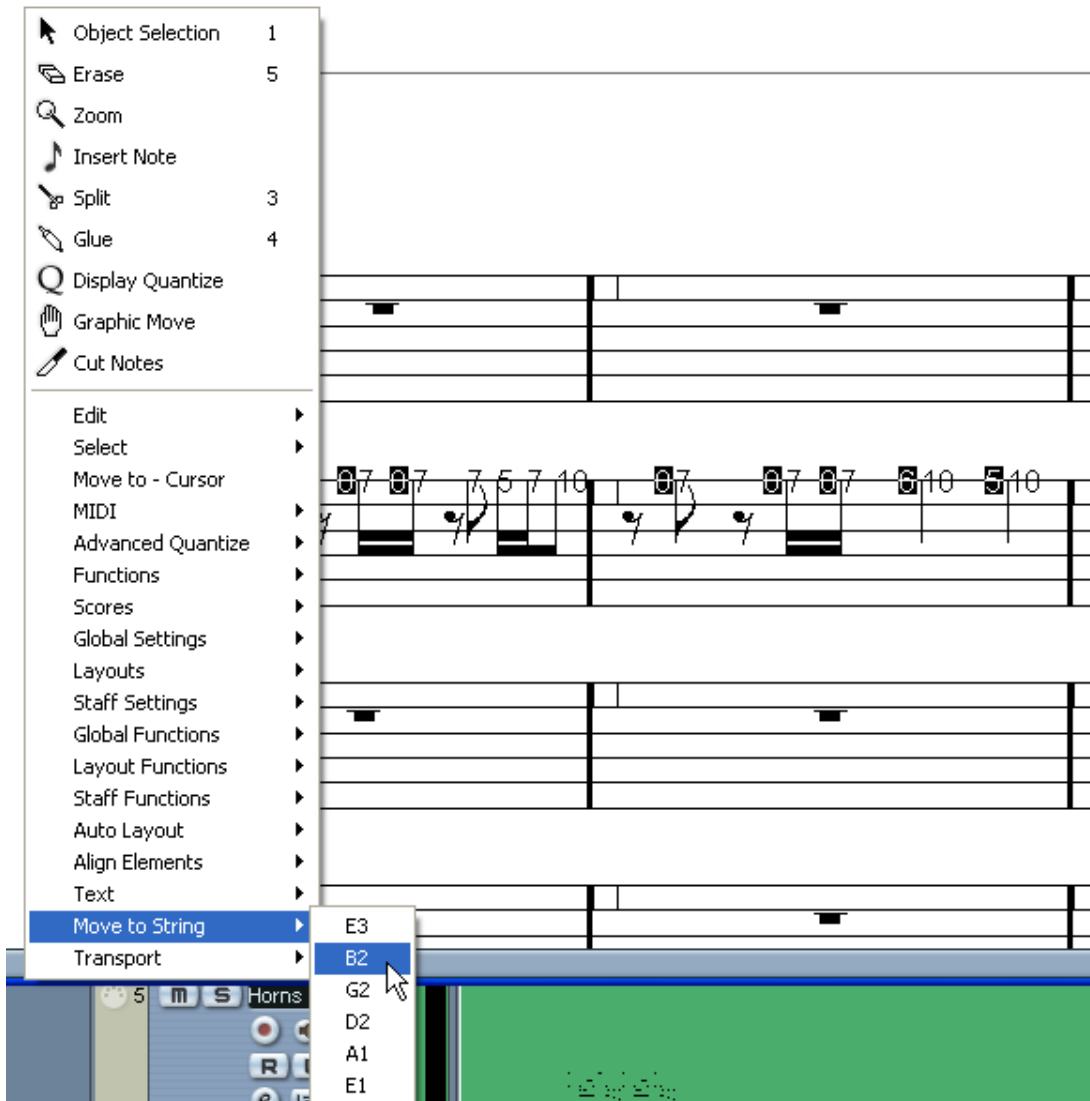
2. After you click Apply, you'll notice the notes have become tab symbols.

### Troubleshooting Tip

If the notes are not on the strings you want them to be on, one of the easiest ways to adjust them is to use "Move to String." For example:



The notes E and B are being displayed on the E string. I want the E note to be displayed as the 5<sup>th</sup> fret on the B string. To do this, I select all the notes I'd like to move by holding down the shift key (or you could select each one and do the process one at a time). I can now left-click in a blank area on the screen and select Move to String.



After I select, B2 as the string I want the notes to move to, they are displayed as this:

The image shows a musical score for a virtual guitar. At the top, a single staff is labeled "Virtual Gtr" and has a "5" written below it. A mouse cursor is positioned at the end of this staff. Below it is a six-string guitar staff, also labeled "Virtual Gtr". The strings are numbered 1 to 6 from top to bottom. The notation includes various notes and chords with fret numbers (5, 7, 10, 11) and a bar line. The notes are: 5 (string 2), 7 (string 3), 7 (string 4), 7 (string 5), 7 (string 6), 5 (string 2), 7 (string 3), 10 (string 4), 7 (string 5), 5 (string 6), 7 (string 2), 7 (string 3), 10 (string 4), 10 (string 5), and 10 (string 6).