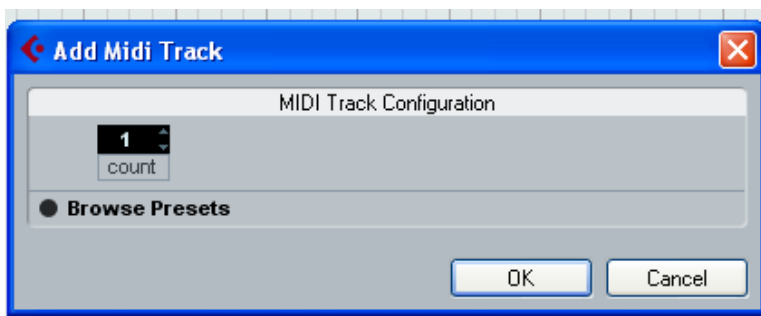
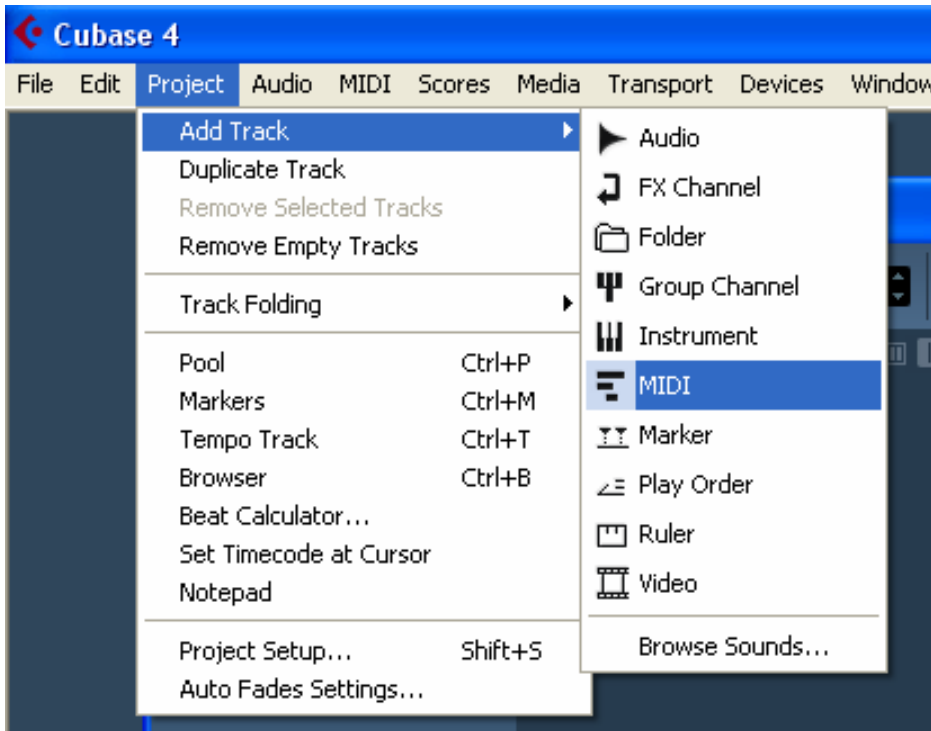


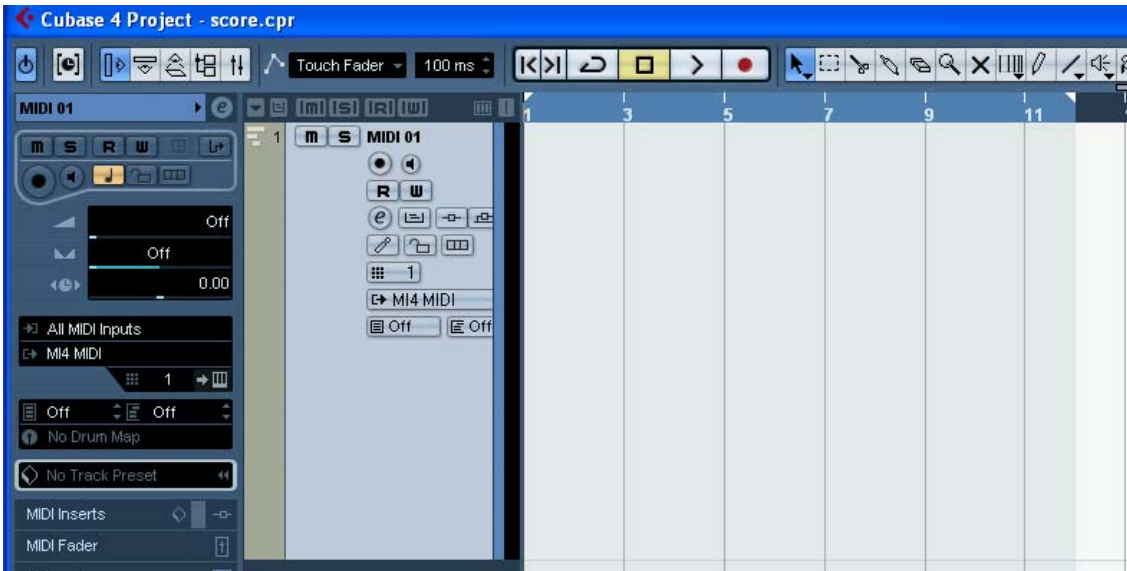
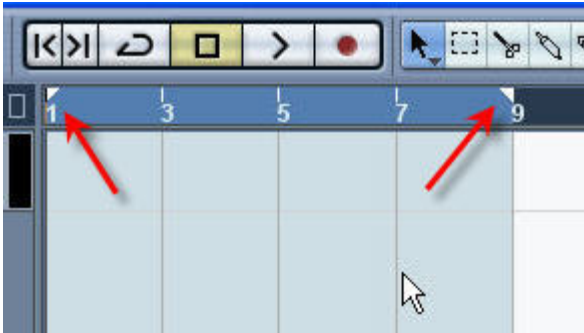
Using the Mouse to Enter Notation in the Cubase Score Editor

Q. How do I enter notation in Score with my mouse?

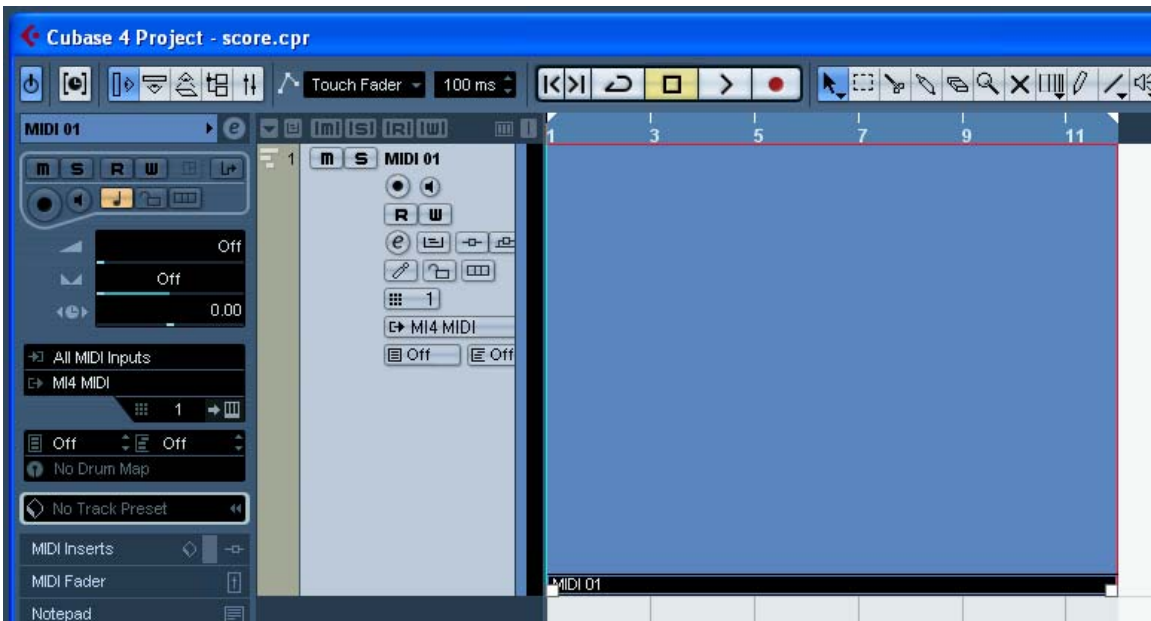
1. Open a new, empty project.
2. Go to the Project drop down menu, Add Track and select the MIDI option. This will create a MIDI track in your project.



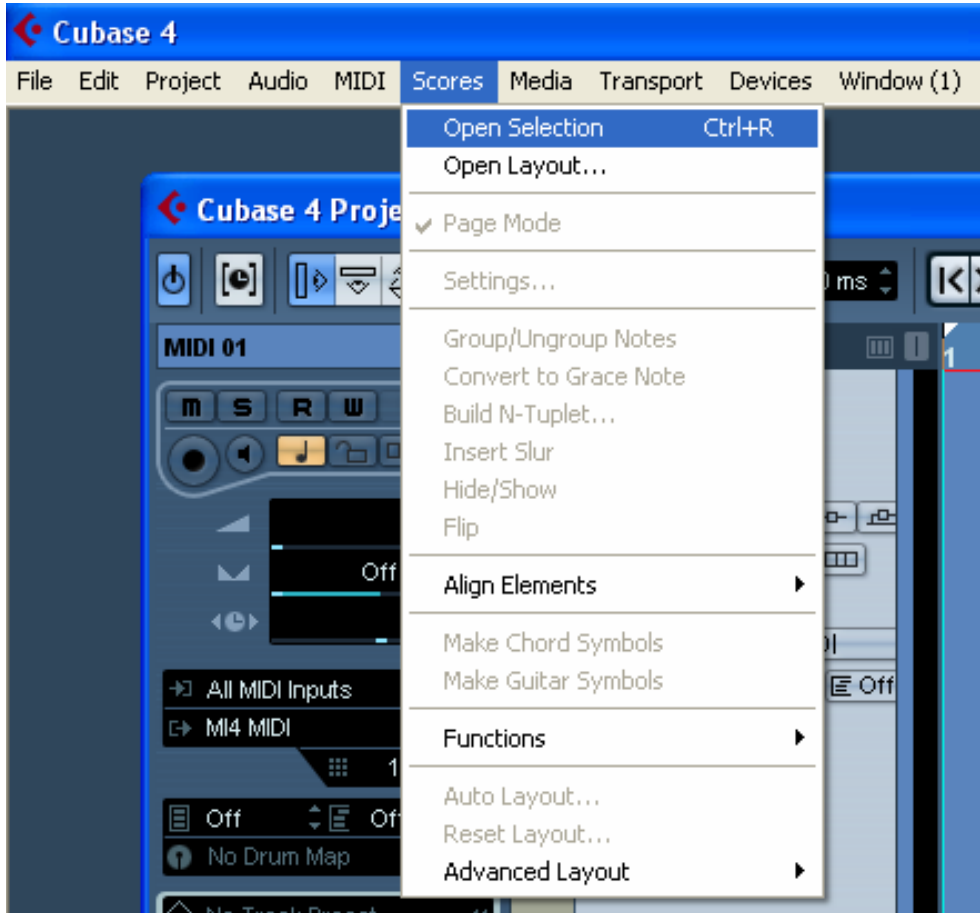
3. Set start and end point locators on the ruler in the project window. To do this, move your cursor to the beginning of the ruler where both locators are located. When the cursor turns into a hand icon, hold down the left mouse button and drag the end point locator to the right.



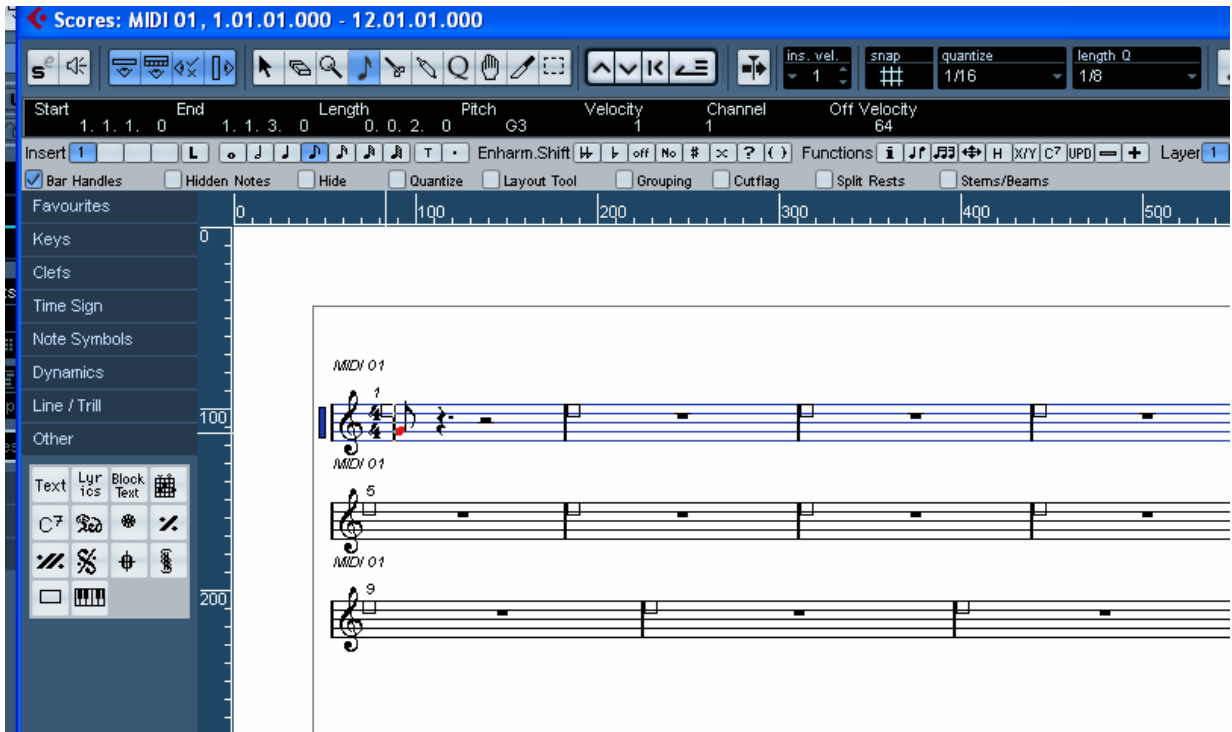
4. Click on the area between the start and end point locators and parallel to the midi track and you will create an empty midi event.



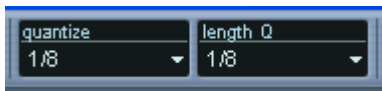
5. Go to the Scores drop down menu and select Open Selection.



6. In the Score window, move the cursor to the notation pallet and select what type of note you would like to enter.



7. Before you enter notes on the staff, make sure that the Quantize settings match the type of note that you want to enter. This will make it much easier for you to insert the note at the appropriate place on the staff.



8. When you move the cursor over the staff, the cursor will turn into the note that you have selected. Move the cursor over the area and click on the staff where you want to add the note.



9. Also, it's important to select the proper value in the Rests dropdown menu in the Staff settings window if you want shorter rests to appear when entering notes in the score editor. *To get to the Staff Settings window, click on the Scores dropdown menu, go to Staff Settings and select Setup.*

