



When you insert lyrics, you should click below or above the note the syllable belongs to. The text will then appear horizontally centered around the note and vertically positioned to where you clicked. You can later move it up or down, as with any symbol. Lyrics are tied to the note position. If you move the note, the text moves with it. The spacing between notes is adjusted to make the lyrics fit.

### Inserting lyrics for a number of notes

1. With lyrics selected, click below or above the note with the Pencil tool. Click below the first note.

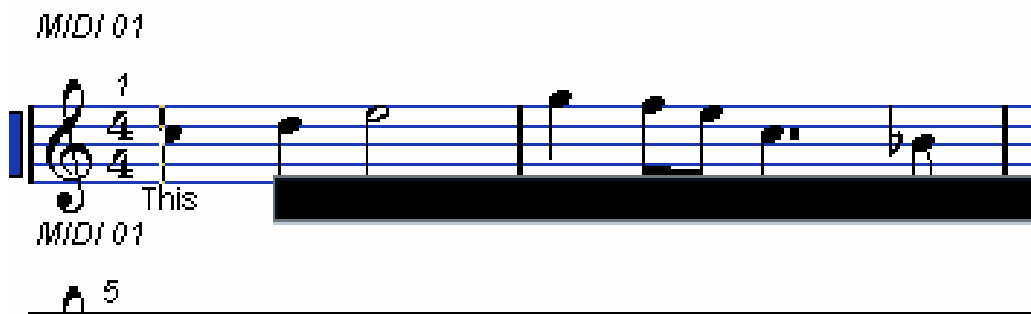


2. In the text dialog that appears type in the syllable for that note.

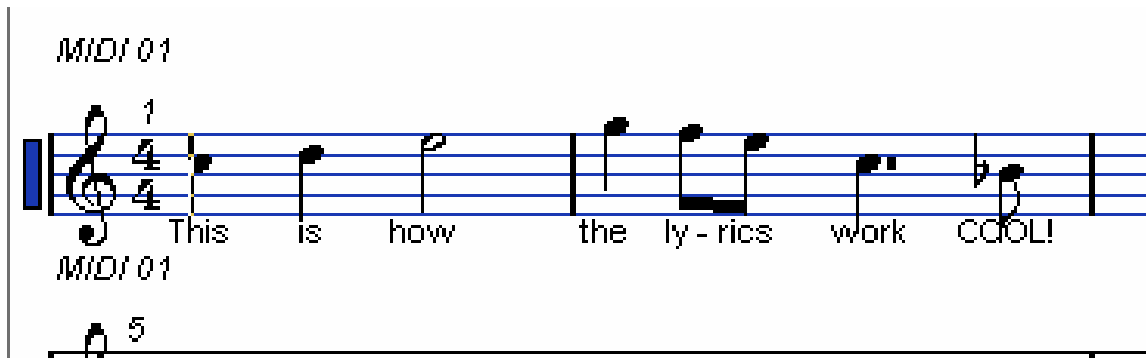


3. Hit [Tab].

The program moves on to the next note.



4. Input text for this note and hit [Tab] again.
5. Proceed until the last note and then press [Return] or click outside the text box.



Normally when you insert lyrics this way, the positions of the notes will automatically be adjusted so that no lyric “block” overlaps another. If this is not what you want, you can activate the option “Don’t Sync Lyrics” in the Notation Style dialog–Switches page (accessed from the Scores–Global Settings submenu). If this is activated, the note positions will not be affected, which may be preferable.

- When entering words with several syllables you normally separate the syllables with a dash (-). By default, the dash signs are automatically centered between the syllables - if this is not what you want, activate the option “Don’t Center Hyphens” in the Notation Style dialog–Switches page.

