

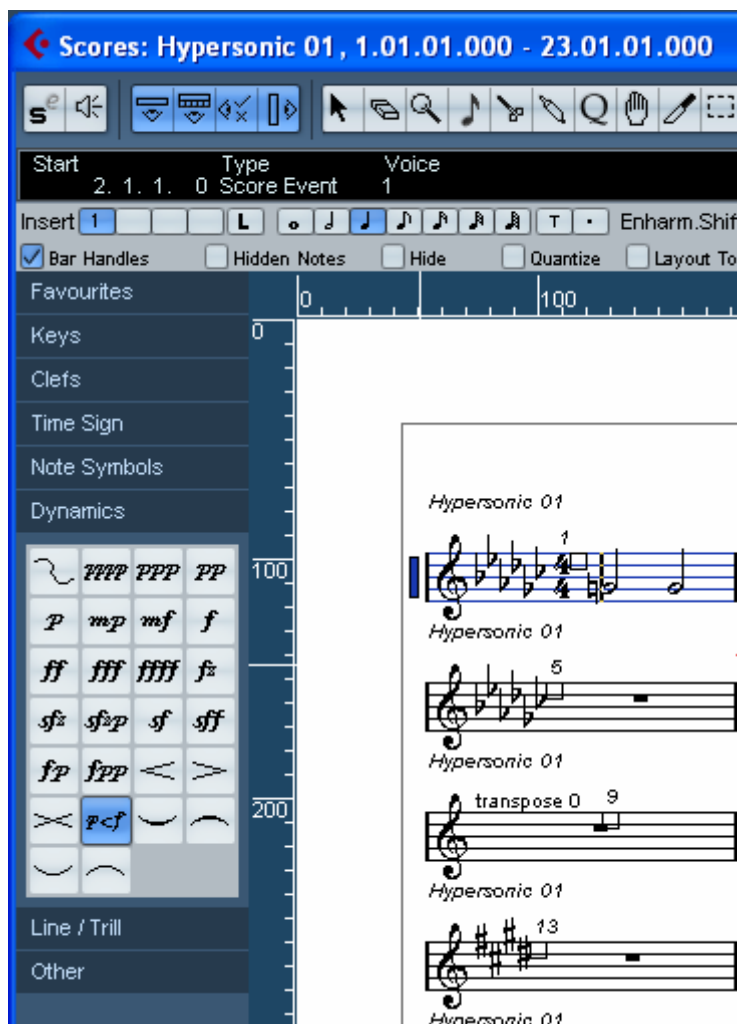
Crescendo's and Decrescendo's in Cubase 4 Score

In the Symbol inspector – Dynamics tab, you will find a special crescendo symbol: This allows you to enter a crescendo or diminuendo in the score and have the note velocity adjusted accordingly during playback. The same rules apply as for MIDI Meaning:

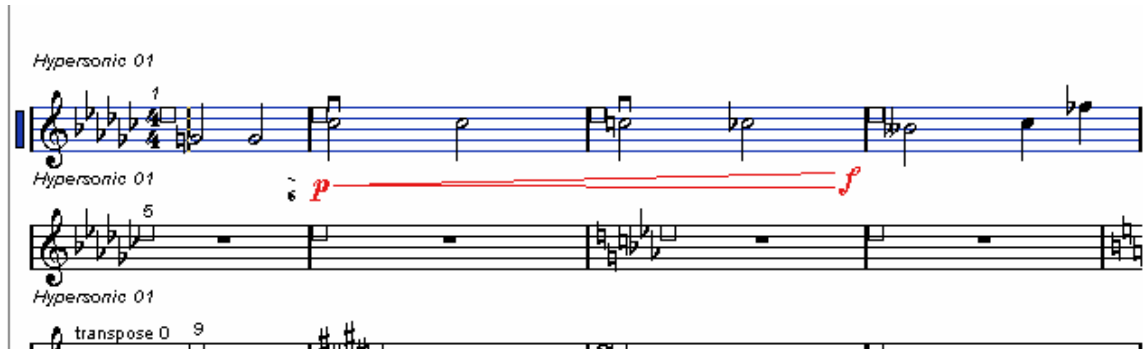
- The actual notes are not affected – the settings affect playback only.
- For the crescendo/diminuendo to be heard, the MIDI sound source must respond to velocity.
- The maximum note velocity is always 127. If the notes are recorded or entered with high velocity values, you may not hear any difference between e.g. forte and fortissimo.

Proceed as follows:

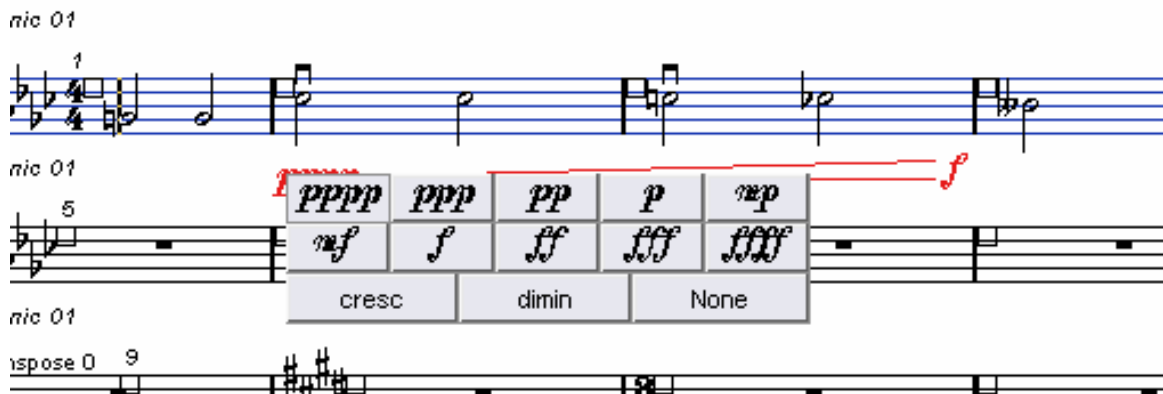
1. Select the dynamic crescendo symbol and make sure the Pencil tool is selected.



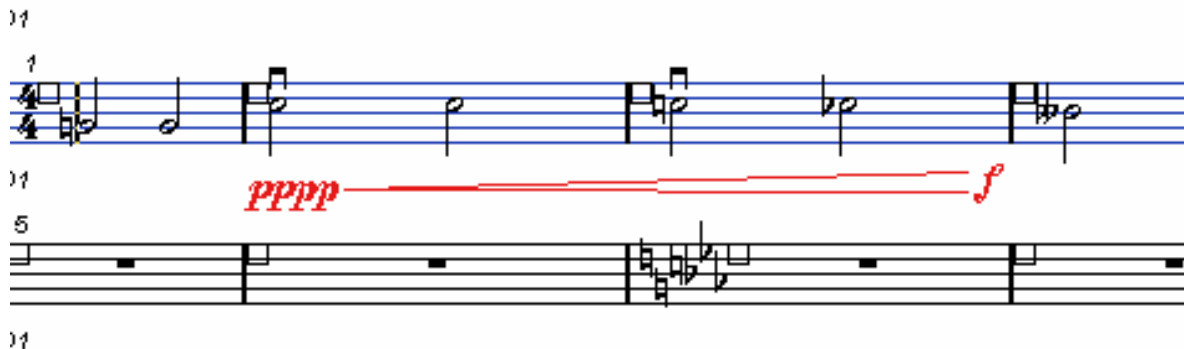
2. Click where you want the crescendo or diminuendo to start, drag to its end position and release the mouse button. By default this inserts a crescendo from piano (p) to forte (f).



3. To adjust the dynamics at either end of the crescendo, right-click to bring up a palette from which to select the desired dynamic symbol.

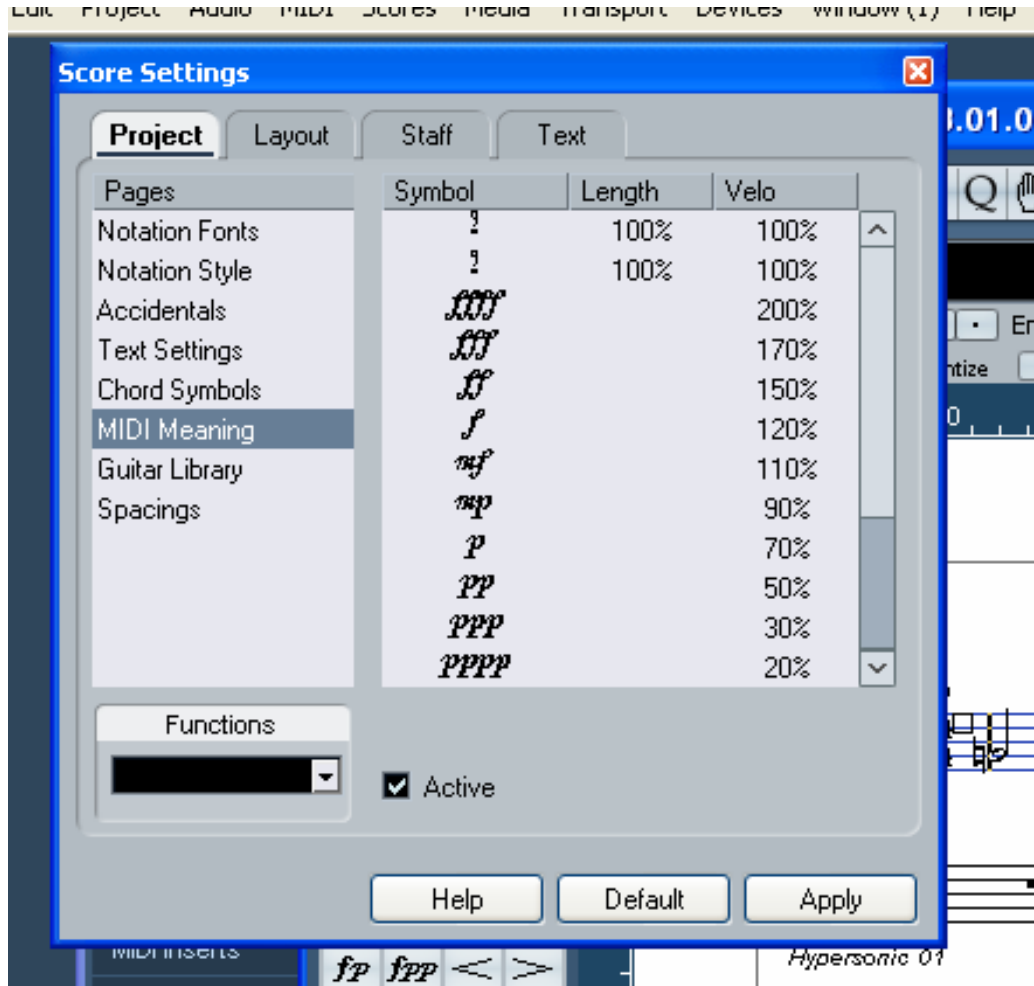


If you select a dynamic symbol at the start that is “louder” than the one at the end, the crescendo symbol is automatically changed to a diminuendo symbol.



- In the palette for the start symbol you will find three additional options: “cresc”, “dim” and “None” (no symbol is shown). If any of these is selected, the crescendo or diminuendo will start from the “current dynamic”, i.e. with the level according to the previous dynamics symbol in the staff.

4. On the Score Settings–Project page, select the MIDI Meaning sub-page and make sure the Active checkbox is ticked. The dynamic crescendo/diminuendo makes use of the MIDI Meaning function and uses the velocity scaling you have set up for the dynamics symbols in this dialog.



5. Start playback.

You should now hear the crescendo or diminuendo affect the note velocities.