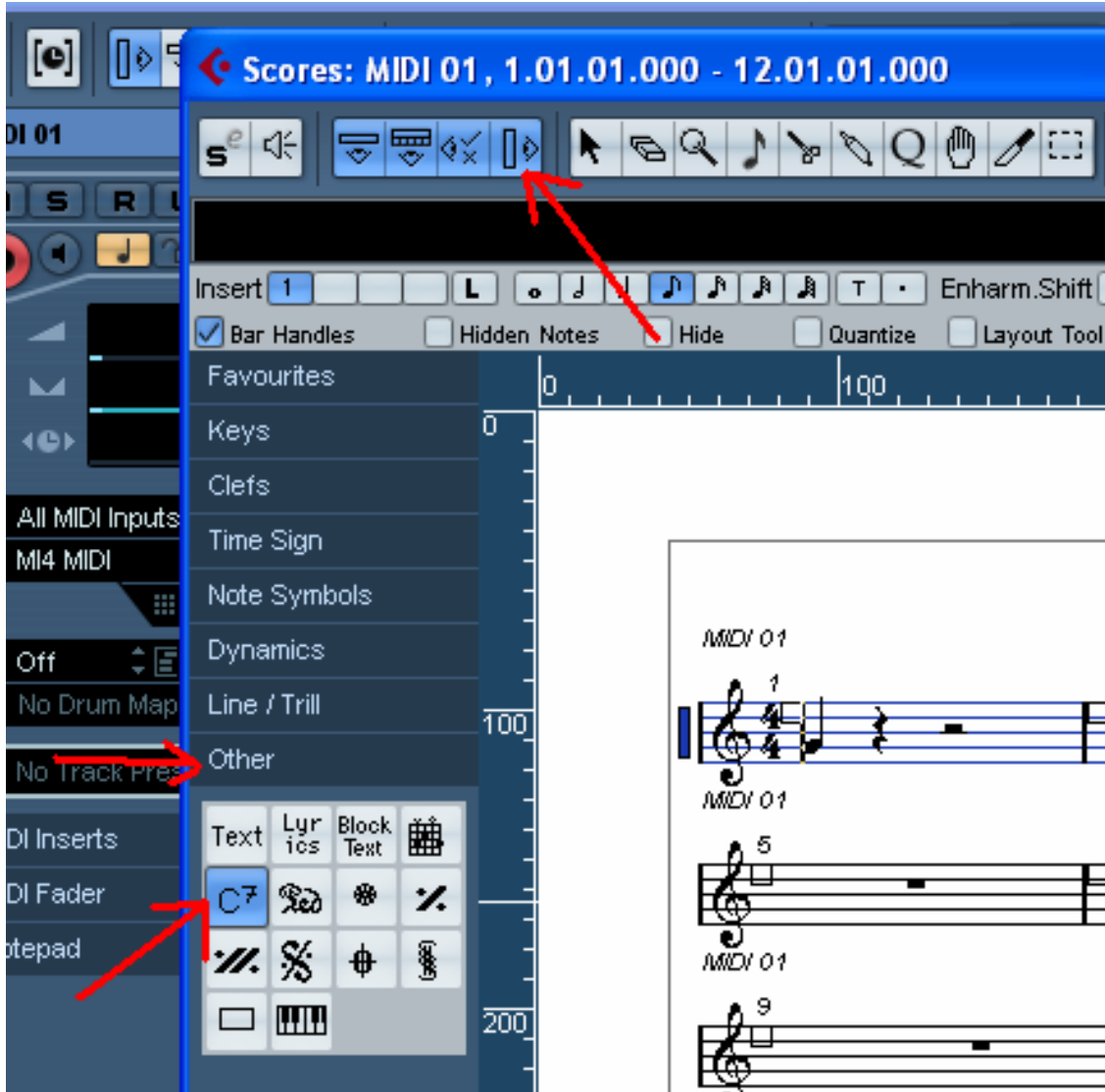
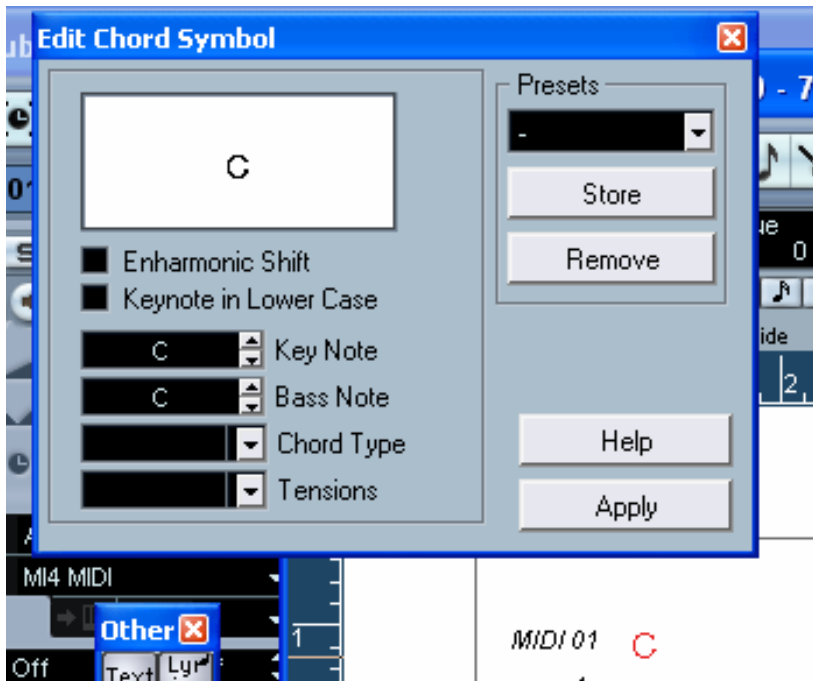


Cubase Scoring / Chord Symbols

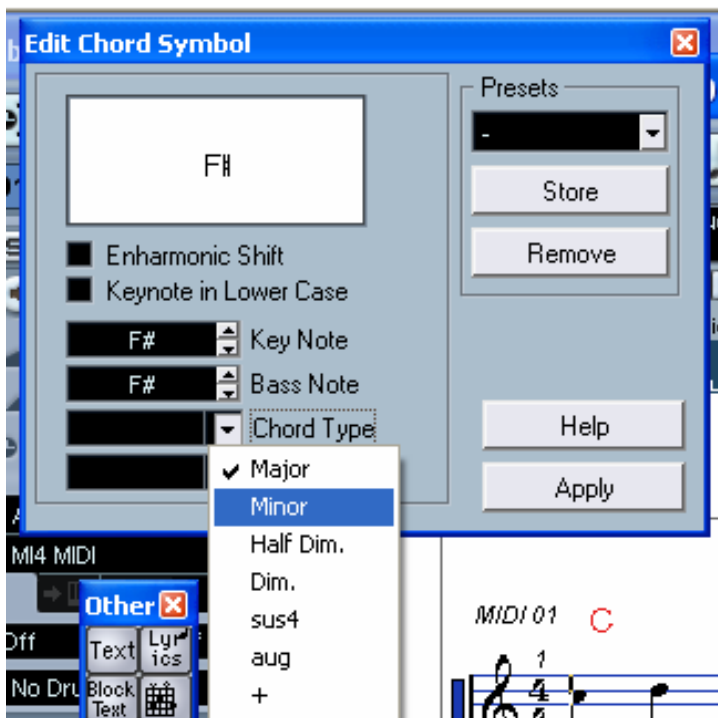
To add a chord symbol, select the Chord option from the Other Palette.



1. Click in the place you would like the chord symbol to be. Enter the key (root) note in the Key Note field. You can either type in a chord letter or select a note from the pop-up menu to the right.

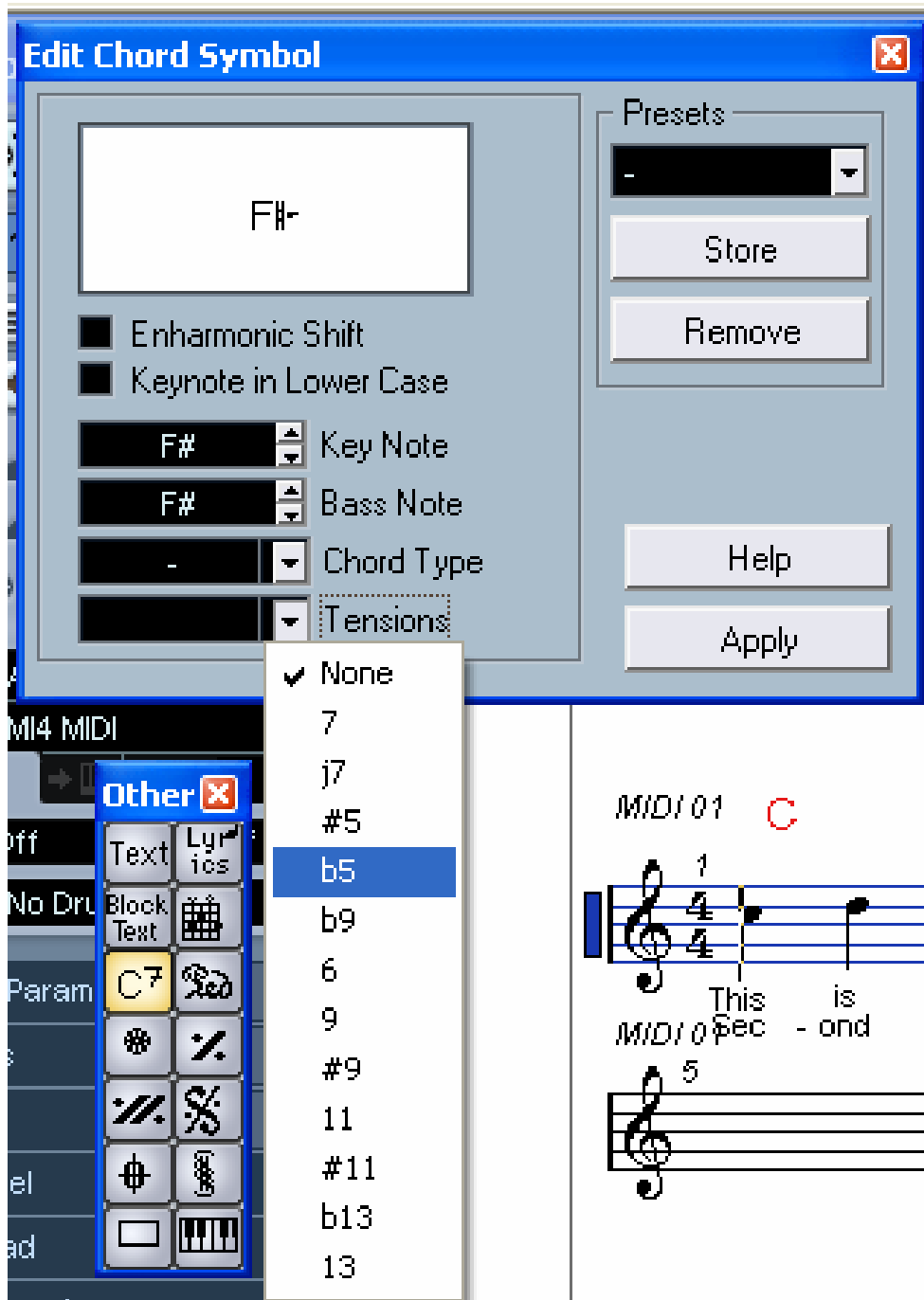


2. Specify a chord type in the “Type” field.
 You can either type it in (for example, by typing a “7”) or select an option from the pop-up menu to the right.



3. If you wish, specify a tension in the “Tension” field.
 Again, this can be done by typing or by using the pop-up menu. However, there are some special display options which you can only get by typing (see the table below). You

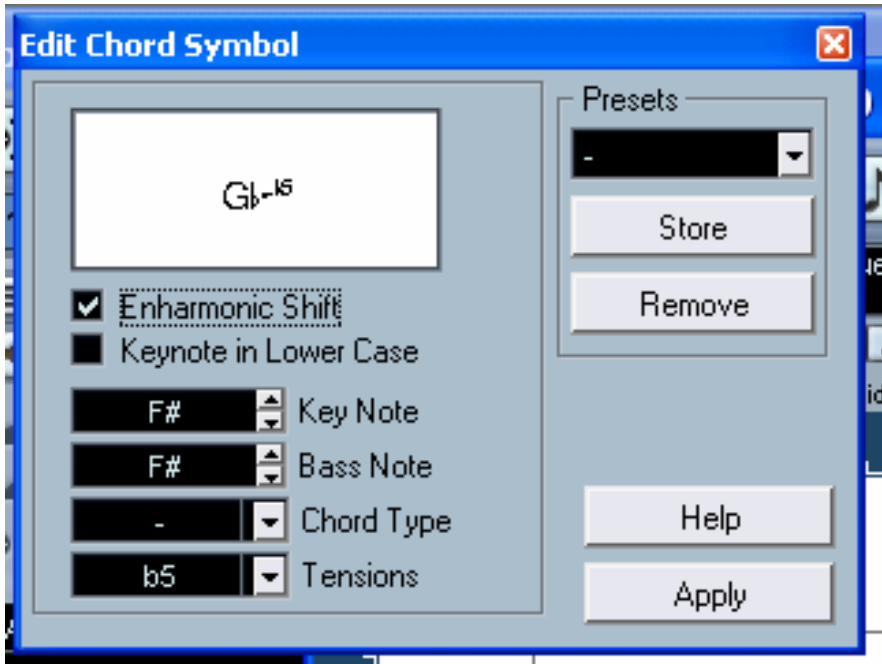
might also want to add some text here (such as “no third”, etc.). If you wish, you can select the basic tensions from the pop-up menu, and then add special options by typing.



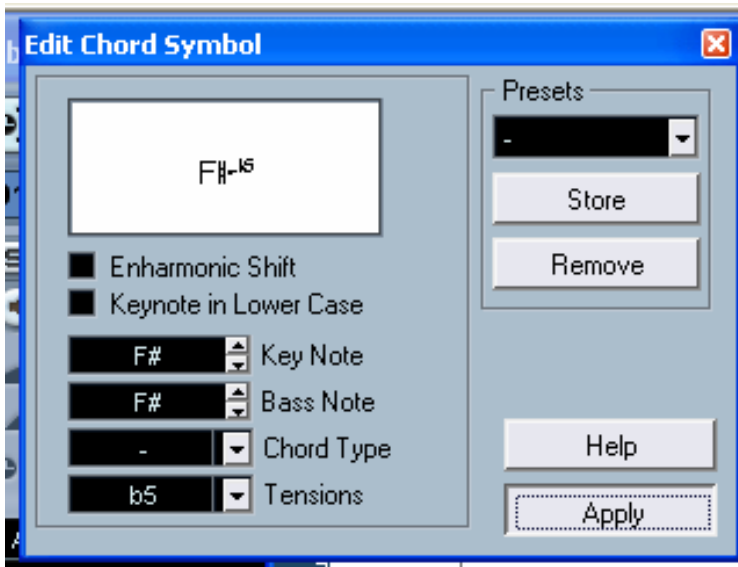
4. If you want to have a special bass note (e.g. a C major with a D bass note) set the Bass Note pop-up menu to anything but the key note. The program will “remember” the relation between key and bass note, so that if you change the key note, the bass note will follow.

5. If you want the key note to be displayed in lower case, activate the “Keynote in lower case” checkbox.

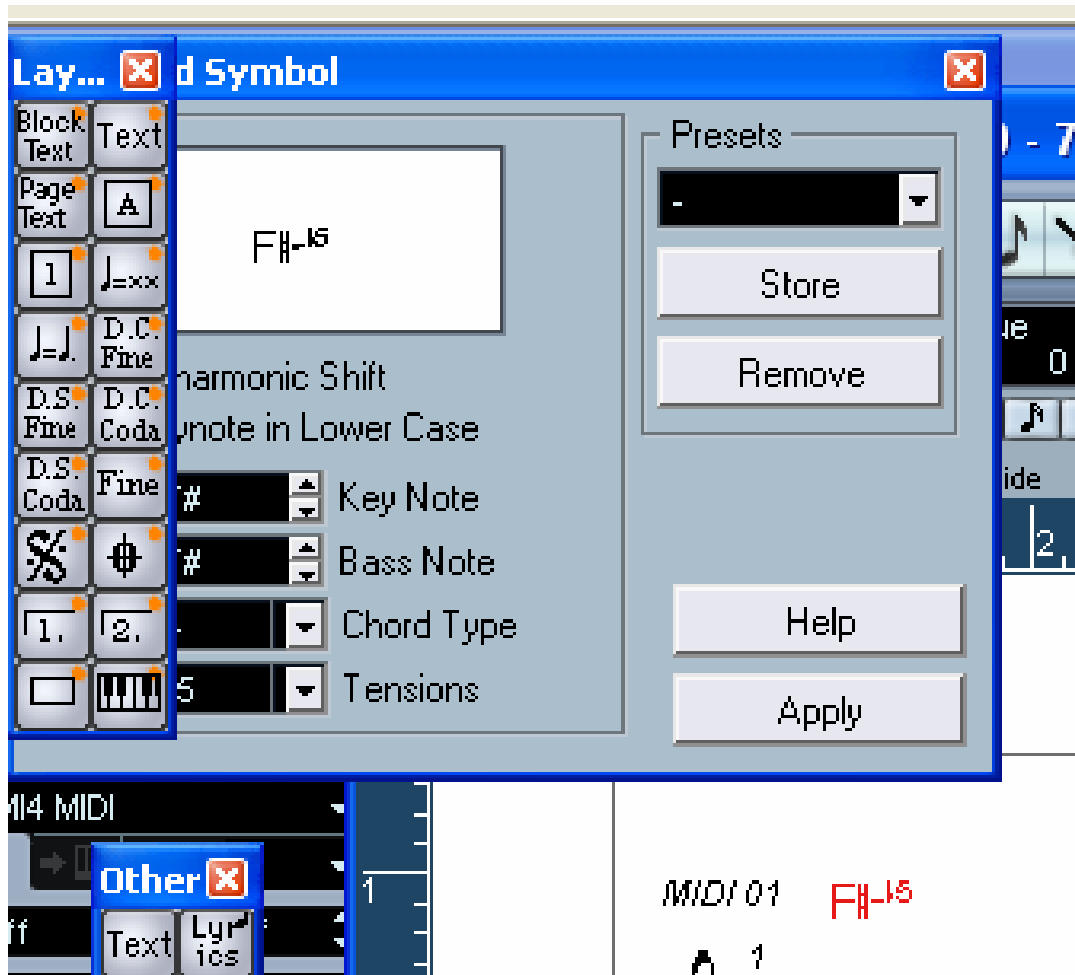
6. If needed, click on the button labeled “Enharm. Shift”, to turn this on or off.



7. Click Apply.



The chord symbol appears in the score.



- If you want to edit a chord, select the symbol, adjust the settings in the dialog and click Apply.

If the dialog is closed, you can open it by double clicking the chord symbol.