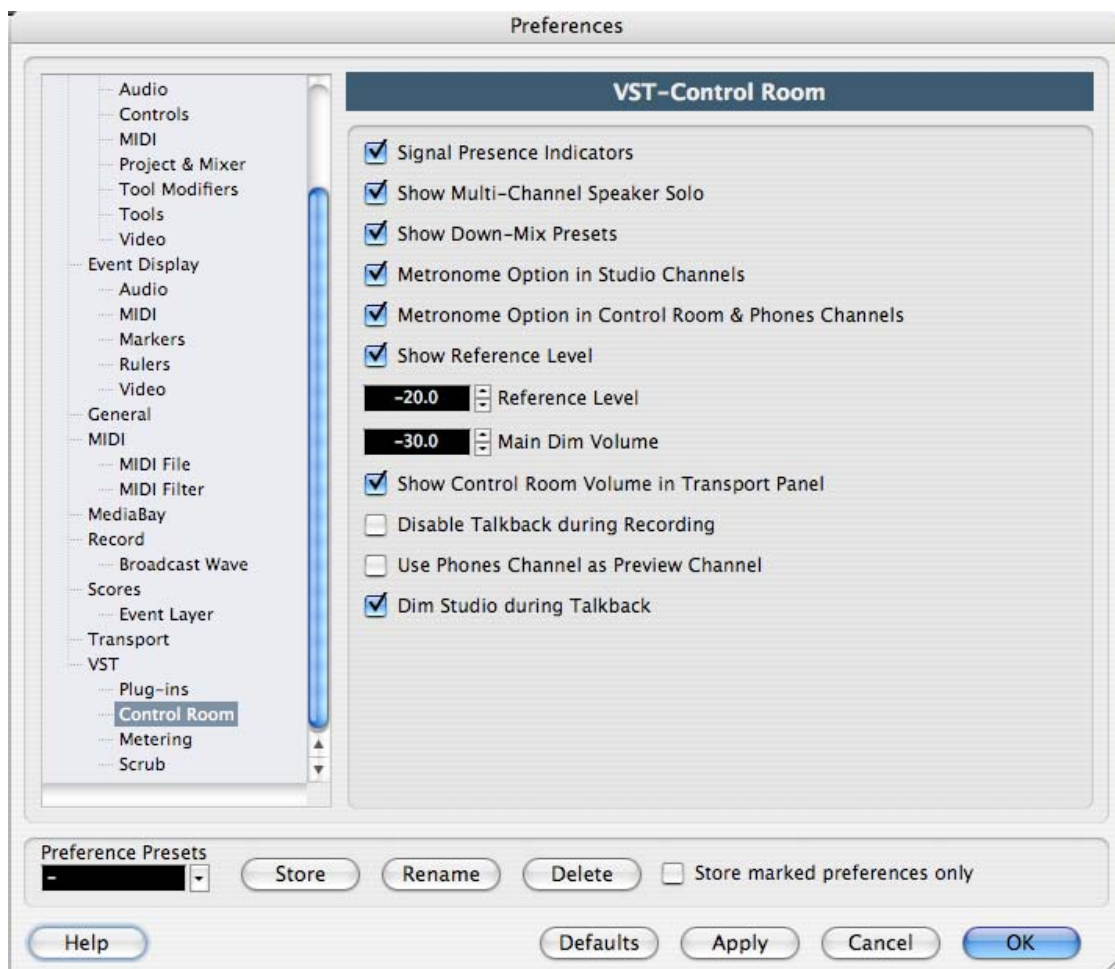


## Control Room Preferences

Below is an explanation of the preferences for Control Room.



### Signal Presence Indicators

If this is activated, you will not see the full-sized meters in the Control Room, but instead small signal presence indicators will be shown next to the input selection buttons. These will indicate signal presence for all inputs.

### Show Multi Channel Speaker Solo

When this is activated, the Speaker Solo panel will be shown in the Control Room.

### Show Down-Mix Presets

When this is activated, the section with the Down-Mix presets (created using the MixConvert plug-in) will be shown in the Control Room.

### Metronome Option in Studio Channels

When this is activated, the Metronome option will be available for the Studio channels.

### Metronome Option in Control Room & Phones Channels

When this is activated, the Metronome option will be available for the Control Room & Phones Channels.

**Show Reference Level**

When this is activated, the reference level will be shown in the Control Room. When the reference level is used, the respective icon will light up. The fader will then automatically switch to display the set reference level.

You can set the desired reference level in the value field below.

**Main Dim Volume**

Use this to set the amount of gain reduction applied to the Control Room channel when the DIM button is activated.

**Show Control Room Volume in Transport Panel**

When this is activated, the Transport Panel will display the Control Room Volume, if the Control Room is enabled. If the Control Room is disabled, the volume of the Main Mix bus will be shown in the Transport Panel.

**Disable Talkback during Recording**

When this is activated, Talkback will be disabled during Recording.

**Use Phones Channel as Preview Channel**

When this is activated, the Phones channel will be used for monitoring. When this is deactivated, the Monitor channel in the Control Room will be used.

**Dim Studio during Talkback**

When this option is activated, the cue mix heard in a studio will be dimmed (by the amount set in the Talkback Dim Level field below the TALK button in the Control Room) for as long as the Talkback channel is used. When this option is deactivated, the cue mix level remains the same during Talkback.